

**CITY OF LA VISTA
MAYOR AND CITY COUNCIL REPORT
MARCH 20, 2012 AGENDA**

Subject:	Type:	Submitted By:
APPROVE CHANGE ORDER- APPLEWOOD CREEK IMPROVEMENTS CHANGE ORDER 1	◆ RESOLUTION ORDINANCE RECEIVE/FILE	JOHN KOTTMANN CITY ENGINEER/ASSISTANT PUBLIC WORKS DIRECTOR

SYNOPSIS

A resolution has been prepared to approve a change order to the contract with Melvin Sudbeck Homes, Inc., Omaha, Nebraska to reduce the quantity of mitigation trees and to change the species of mitigation trees. This change is necessary to comply with conditions of the Corps of Engineers permit for this project.

FISCAL IMPACT

The change order reduces the construction cost.

RECOMMENDATION

Approval

BACKGROUND

Bids were taken on this project on January 5, 2012. On January 6, 2012 a communication was received from the Corps of Engineers advising that they would agree to allow a reduction in the required number of mitigation trees to be planted. They also advised that some of the species in the tree planting list upon which the bid was based must be changed to a native species instead of an introduced species. The change in species and quantity of trees required revision to the unit price for mitigation trees.

Change Order No. 1 will decrease the contract price from \$311,241.48 to \$305,959.68.

RESOLUTION NO. _____

A RESOLUTION OF THE MAYOR AND CITY COUNCIL OF THE CITY OF LA VISTA, NEBRASKA AUTHORIZING A CHANGE ORDER TO THE CONTRACT WITH MELVIN SUDBECK HOMES, INC., OMAHA, NEBRASKA, TO REDUCE THE CONTRACT PRICE TO \$305,959.68.

WHEREAS, the City has determined it is necessary to reduce the quantity of mitigation trees and to change the species of mitigation trees; and

WHEREAS, this change is necessary to comply with conditions of the Corps of Engineers permit for this project; and

NOW THEREFORE, BE IT RESOLVED, by the Mayor and City Council of the City of the City of La Vista, Nebraska, that the Mayor is authorized to execute the necessary documents for a change order with Melvin Sudbeck Homes, Inc., Omaha, Nebraska, for reduction of the quantity of mitigation trees and to change the species of mitigation trees for a decrease in the contract price from \$311,241.48 to \$305,959.68.

PASSED AND APPROVED THIS 20TH DAY OF MARCH, 2012.

CITY OF LA VISTA

Douglas Kindig, Mayor

ATTEST:

Pamela A. Buethe, CMC
City Clerk

CHANGE ORDER NO. 1

PROJECT: APPLEWOOD CREEK IMPROVEMENTS

DATE: _____

CONTRACT DATE: January 17, 2012

OWNER: The City of La Vista, Nebraska
8116 Park View Blvd.
La Vista, NE 68128

CONTRACTOR: Melvin Sudbeck Homes, Inc.
16255 Woodland Drive
Omaha, NE 68136

TD2 No.: 171-392

DESCRIPTION OF CHANGES:

REDUCTIONS:

Item	Description	Approx. Quantities		Unit Price			Amount
26	Replacement Trees Per Plant Schedule, In Place	222	EA.	\$ 129.00	/	EA	\$ 28,638.00
TOTAL REDUCTIONS							\$ 28,638.00

ADDITIONS:

Item	Description	Approx. Quantities		Unit Price			Amount
26A	Overstory Trees Per Plant Schedule, In place	88	EA.	\$ 153.15	/	EA	\$ 13,477.20
26B	Understory Trees Per Plant Schedule, In Place	60	EA.	\$ 164.65	/	EA	\$ 9,879.00
TOTAL ADDITIONS							\$ 23,356.20

NET CHANGE IN CONTRACT PRICE: (\$ 5,271.80)

ORIGINAL CONTRACT PRICE: \$ 311,241.48

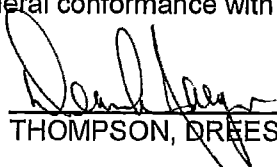
REVISED CONTRACT PRICE: \$ 305,959.68

The contract time will remain unchanged at forty (40) working days.

REASONS FOR CHANGES:

The Replacement Tree Count has been reduced from 222 to 148 and the Tree Species modified as the result of Corps of Engineers review and recommendations. Trees to be supplied and planted shall be in accordance the "Tree Mitigation Schedule" dated January 12, 2012 as hereto attached. Trees shall be planted in general conformance with the "Conceptual Planting Scheme" as hereto attached

SIGNED:




THOMPSON, DREESSEN & DORNER, INC.

The undersigned parties to the above-referenced contract hereby agree to the changes as set forth above.

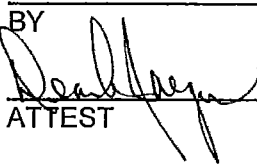
The City of La Vista, Nebraska

Melvin Sudbeck Homes, Inc.

BY _____ TITLE _____

BY  TITLE 

ATTEST _____

ATTEST 

TREE MITIGATION PLANT SCHEDULE

January 12, 2012

QUANTITY	ZONE	SYMBOL	OVERSTORY TREES					MATURE SIZE			PLANTING SIZE			PLANT	
			COMMON NAME		BOTANICAL NAME	SPRD	HGT	CALIPER	HGT						
15	A	CO	PRAIRIE PRIDE HACKBERRY		CELTIS OCCIDENTALIS 'PRAIRIE PRIDE'	50	70	1.5"			30'		BB/S-30		
20	A&B	SL	SKYLINE LOCUST		GLEDITSIA TRICANTHOS INERMIS 'SKYLINE'	35	50	1.5"			30'		BB/S-30		
10	A&B	S	SYCAMORE		PLATANUS OCCIDENTALIS	50	80	1.5"			35'		BB/S-30		
9	B	WO	WHITE OAK		QUERCUS ALBA	45	70	1.5"			30'		BB/S-30		
9	B	PB	PAPER BIRCH		BETULA PAPYRIFERA	45	70	1.5"			30'		BB/S-30		
10	B	BO	BUR OAK		QUERCUS MACROCARPA	45	55	1.5"			30'		BB/S-30		
15	A	VFE	VALLEY FORGE ELM		ULMUS 'VALLEY FORGE'	60	70	1.5"			30'		BB/S-30		
88	0	TOTAL	OVERSTORY TREES										BB/S - 30 Balled & Burlaped or Spaded - size of ball in inches		

UNDERSTORY/ORNAMENTAL														
COMMON NAME			BOTANICAL NAME			MATURE			PLTG SIZE			PLANT		
30	A&B	SS	JUNEBERRY		AMALANCHIER ARBOREA			15	30	1"			12'	BB/S-20
30	A&B	PV	COMMON CHOKECHERRY		PRUNUS VIRGINIANA			20	30	1"			12'	BB/S-20
60	TOTAL UNDERSTORY/ORN. TREES											BB/S -20 Balled & Burlaped or Spaded - size of ball in inches		

148 TOTAL NUMBER OF MITIGATION TREES

ZONE A - REAR PROPERTY LINE OF HOUSES ALONG 101ST STREET & NW CORNER OF BRENTWOOD AND 101ST

ZONE B - AREAS NORTH AND SOUTH OF BRENTWOOD DRIVE

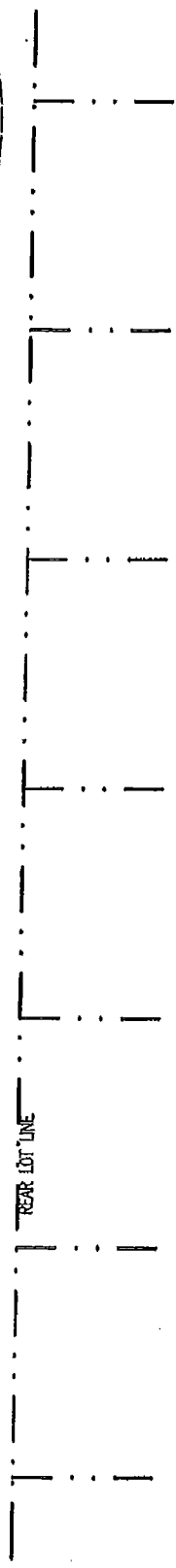
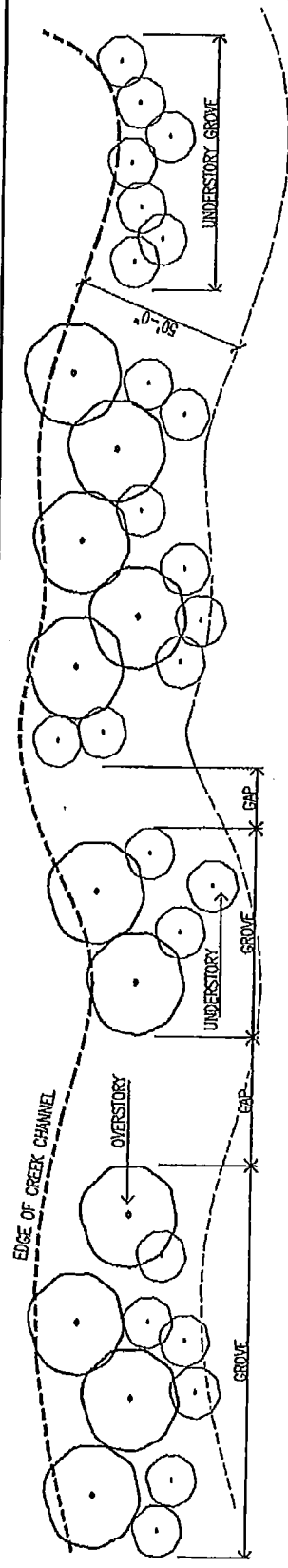
QUANTITIES PER SPECIES MAY VARY AS LONG AS TOTAL TREE COUNT IS 148.

ACCEPTABLE SUBSTITUTIONS:

NORTHERN RED OAK FOR WHITE OAK

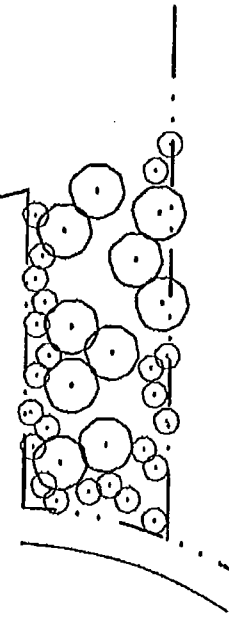
VALLEY FORGE ELM FOR PAPER BIRCH

CHOKECHERRY FOR JUNEBERRY



ZONE A

PLANT UNDERSTORY IN FRONT OF OVERSTORY. TRY TO KEEP PLANTING WITHIN 50' OF CREEK CHANNEL.



ZONE B

PLANT UNDERSTORY TO BE VISIBLE FROM BRENTWOOD DRIVE, 101ST STREET AND/OR HOUSES

PLANS NOT TO SCALE

TYPICAL PLANTING GUIDELINES.

1. NO STRAIGHT LAYOUT LINES
2. START LAYOUT AGAINST EXISTING TREES ALONG STREAM CHANNEL AND WORK OUTWARD TOWARD HOUSES AND/OR STREETS.
3. PLANT OVERSTORY CLOSEST TO STREAM CHANNEL WITH UNDERSTORY AT OUTER EDGE OF OVERSTORY.
3. VARY SPACING, I.E. IF SCHEDULE STATES 30' O.C., SPACING CAN BE VARIED FROM 25' TO 35' O.C. CLOSER SPACING MAY BE REQUIRED TO ACHIEVE TREE COUNT.
4. MOST GROVES SHOULD BE COMBINATIONS OF ODD NUMBERED GROUPINGS.
 - 3 OVERSTORY, 5 UNDERSTORY
 - 1 OVERSTORY, 3 UNDERSTORY
 - 3 OLM, 5 CHOCHECHERRY
5. PLANT GROVES OF LIKE SPECIES
6. PLANT SYCAMORE AND POPLAR AS SINGLES OR DOUBLES WITH NO UNDERSTORY.
7. GROVES OF UNDERSTORY WITHOUT OVERSTORY MAY BE PLANTED ADJACENT TO PROPERTY LINE.

CONCEPTUAL
PLANTING SCHEME

APPROVED CREEK
IMPROVEMENTS
TREE MITIGATION PLAN

DATE: 01/11/2011
BY: [Signature]
PROJECT: [Signature]

DAVID FLARE
LANDSCAPE ARCHITECTURE
815 SOUTH 10TH AVE
SUITE 100
TAMPA, FL 33606
407.253.1111
dflare@flare.com

