

**CITY OF LA VISTA  
MAYOR AND CITY COUNCIL REPORT  
JULY 5, 2017 AGENDA**

| Subject:   | Type:                                     | Submitted By:                       |
|--|---|-------------------------------------|
| PROFESSIONAL SERVICES<br>AGREEMENT - STREETScape PLAN<br>FOR 84 <sup>TH</sup> STREET | ◆ RESOLUTION<br>ORDINANCE<br>RECEIVE/FILE | CHRISTOPHER SOLBERG<br>CITY PLANNER |

### SYNOPSIS

A resolution has been prepared authorizing the selection of Design Workshop as the firm to develop a streetscape design for the 84<sup>th</sup> Street corridor and further authorizing staff to negotiate a detailed scope of work and terms of an agreement to be brought back to the City Council for approval.

### FISCAL IMPACT

The FY17/18 biennial budget provides funding for multiple potential public infrastructure improvements and associated services.

### RECOMMENDATION

Approval of Design Workshop and authorization to negotiate a comprehensive scope of services and related agreement.

### BACKGROUND

In 2010, the City completed *A Vision Plan for 84<sup>th</sup> Street* (Vision 84), which included an extensive public process and the adoption of a master plan identifying the vision for 84<sup>th</sup> Street as the creation of a downtown for the community. *“The 84<sup>th</sup> Street corridor will be the central city core, with a memorable and distinct identity, a vibrant mix of land uses, a sense of community and a high quality of life for residents.”*

The Vision 84 plan identifies “Unique streetscape enhancements along 84th Street” as one of the goals of the master plan. As noted above, there was an extensive public participation in the development of the Vision 84 plan. However, since this time, there have been few opportunities for direct Public participation. The development of a detailed Streetscape Plan presents a unique opportunity to reengage residents and business owners in determining the look and feel of the City’s Central core.

On April 4, 2017, the City Council authorized the advertisement for a Request for Proposals (RFP) for the preparation of a streetscape plan for the 84<sup>th</sup> Street corridor. The City received proposals from Design Workshop, Felsburg Holt & Ullevig, HDR, and RDG. The proposals were reviewed by a six-member staff committee and interviews were conducted with all four firms.

Design Workshop was determined to provide the services that most closely meets the City’s needs based on their experience with similar projects, approach to public engagement, attention to detail, and the diversity of expertise on their team. As such, it is recommended that staff be authorized to negotiate a scope of services and terms of an agreement with Design Workshop to provide streetscape design services. The finalized agreement will be brought back to the City Council for approval.

**RESOLUTION NO. \_\_\_\_\_**

A RESOLUTION OF THE MAYOR AND CITY COUNCIL OF THE CITY OF LA VISTA, NEBRASKA AUTHORIZING THE SELECTION OF DESIGN WORKSHOP, DENVER, COLORADO, TO PROVIDE STREETScape DESIGN SERVICES FOR THE 84<sup>TH</sup> STREET CORRIDOR AND AUTHORIZING STAFF TO NEGOTIATE A DETAILED SCOPE OF WORK AND TERMS OF AN AGREEMENT.

WHEREAS, the Mayor and City Council of the City of La Vista have determined that professional streetscape design services for the 84<sup>th</sup> Street corridor are necessary; and

WHEREAS, the FY17/18 Biennial Budget contains funding for multiple potential public infrastructure improvements and associated services; and

WHEREAS, Design Workshop was determined to be the company that most closely meets the City's needs.

NOW, THEREFORE BE IT RESOLVED, that the Mayor and City Council of La Vista, Nebraska do hereby select Design Workshop, Denver, Colorado to provide streetscape design services and authorize staff to negotiate a detailed scope of work and terms of an agreement.

PASSED AND APPROVED THIS 5TH DAY OF JULY 2017.

CITY OF LA VISTA

ATTEST:

\_\_\_\_\_  
Douglas Kindig, Mayor

\_\_\_\_\_  
Pamela A. Bueth, CMC  
City Clerk

PROPOSAL FOR

# STREETSCAPE PLAN FOR 84<sup>TH</sup> STREET

PREPARED FOR THE CITY OF LA VISTA  
MAY 1<sup>ST</sup>, 2017



PREPARED BY

**DESIGNWORKSHOP**

1390 LAWRENCE STREET, SUITE 100  
DENVER, CO 80204  
303.623.5186







**Design Workshop, Inc.**  
Landscape Architecture  
Planning  
Urban Design

1390 Lawrence Street  
Suite 100  
Denver, Colorado 80204  
303.623.5186  
303.623.2260 fax

Asheville

Aspen

Austin

Chicago

Denver

Dubai

Houston

Lake Tahoe

Los Angeles

Shanghai

[designworkshop.com](http://designworkshop.com)

May 1, 2017

Pamela A Buethe  
City Clerk  
City of La Vista  
8116 Park View Blvd.  
La Vista, NE 68128

Re: A Streetscape Plan for 84th Street

Dear Ms. Buethe + selection committee,

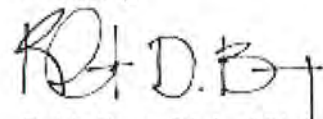
It is with great pleasure and enthusiasm that we are submitting our proposal and thoughts on the 84th Street Streetscape project. The City has shown great foresight in understanding what the future of La Vista is with 84th Street at its heart. Our firm believes that's streets are the connective tissue of communities and great streets are ones that spur investment, provide valuable community infrastructure, and create an environment where daily activities build upon each other to become the collective hum of city life. This is a great moment of city building in La Vista with the development of the City Center and the reconstruction of Civic Center Park; our team would love to help you realize the full potential of the 84th Street Corridor as the city's next great boulevard.

Design Workshop is the national leader in sustainable and economically beneficial streetscape and corridor design having helped cities similar to La Vista realize the full potential of their corridors. Our most recent and relevant projects include the P Street reconstruction in Lincoln, South Broadway in Denver, Post Oak Boulevard in Houston, and South Grand Boulevard in St. Louis. These projects all share a similar quality and goal as 84th Street in that they are transforming a car dominated landscape into a vibrant pedestrian environment rich with robust economic opportunities. Our team, recognized by the American Society of Landscape Architects with over 300 awards including the highest honor of firm of the year, brings unparalleled experience in a community driven design processes that lead to projects of enduring quality. To supplement our expertise, we have assembled a team of local and national experts including Schemmer who coauthored the Vision 84 Plan and brings an intimate understanding of the City and 84th Street; LSC Transportation Planning which specializes in strategic street reconstruction; Clanton Lighting Design; and Hines Irrigation which specializes in sustainable water usage. We believe that this team is uniquely suited to deliver an exciting plan to move 84th Street from "*a street*" to "*the street*" at the heart of La Vista.

Our team's approach is centered around providing measurable project goals that guide the design and implementation of a more holistic approach to the urban street. We will evaluate and develop ideas based on two scales of thinking. The first scale will set up a unifying character for the entire district and will establish the over-arching strategies for solving corridor wide issues. The second scale of thinking ensures a more granular approach to street design that acknowledges the fact that one size does not fit all when it comes to place-making. This multi-lens approach will ensure a solution that is both functional and beautiful resulting in a memorable and enduring destination for the city.

Our team is thrilled to begin working with you and we look forward to the opportunity to continue to share our enthusiasm for this project. Our proposal presented in the following pages is effective for 90 days and can be reevaluated if need be. Please let me know if there are any questions at all or if we can provide any more information. You can always reach us at [jbrooks@designworkshop.com](mailto:jbrooks@designworkshop.com) or by phone at 720.907.9348.

Sincerely,

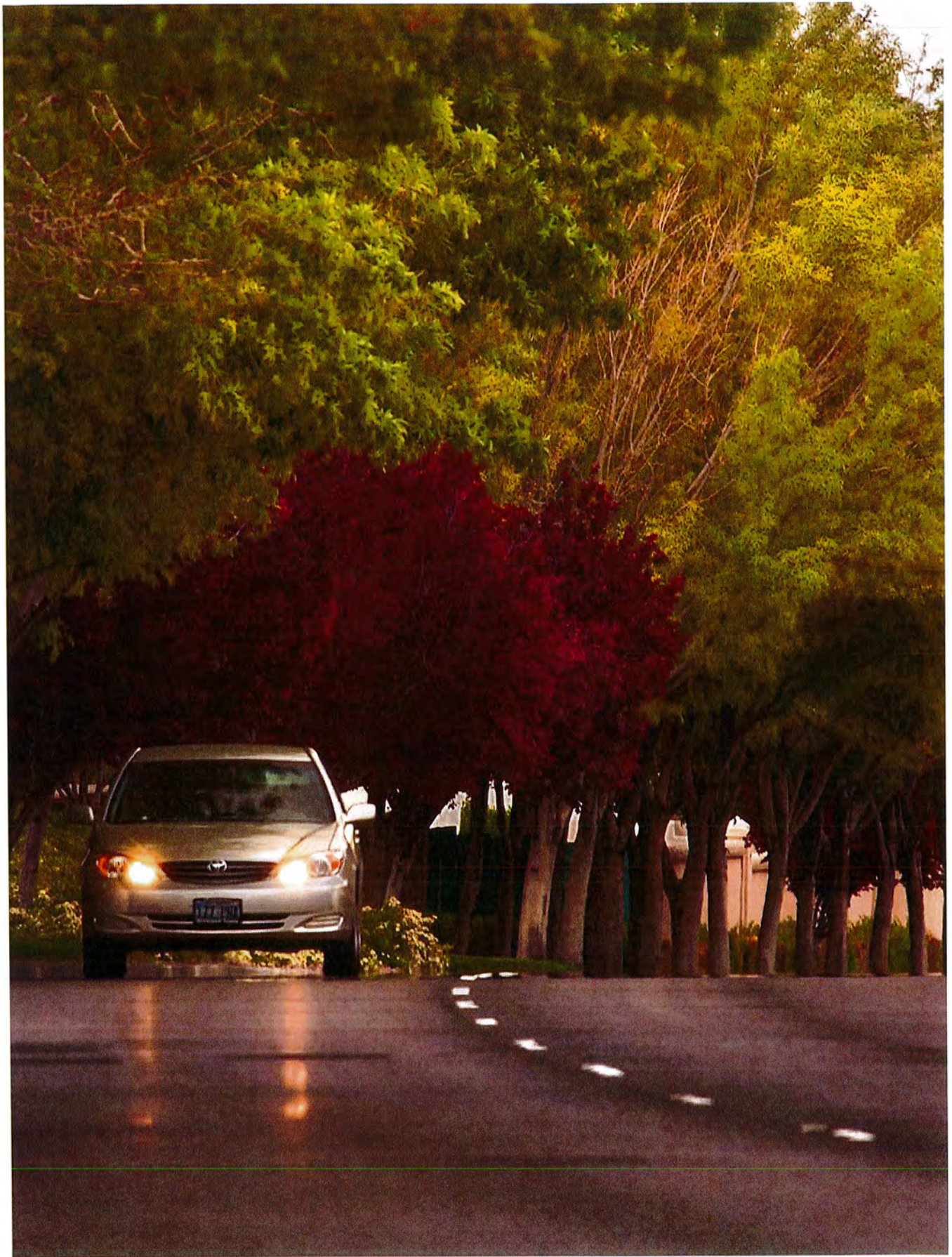


Robb Berg, PLA, ASLA  
Principal  
Design Workshop, Inc.



Joshua Brooks, PLA, ASLA  
Associate  
Design Workshop, Inc.







# QUALIFICATIONS

Design Workshop is a landscape architecture, land planning, and urban design firm with a special focus on streets and corridor design. We have been providing these services for nearly five decades to developers, property owners, government agencies and other clients engaged in improvements to the land. In our years of practice, we have evolved a proprietary approach and distinct culture centered around community driven design resulting in built landscapes of the highest quality.

# ABOUT DESIGN WORKSHOP

For more than four decades, Design Workshop has provided landscape architecture, planning, urban design and strategic services to clients in North America and throughout the world. We are committed to creating special places that meet today's needs and that are sustainable environments for all time.

Design Workshop is a firm born in the pursuit of ideas. While college classmates, founders Don Ensign and Joe Porter resolved to someday start their own landscape architecture firm. The opportunity came in 1969 when both assumed teaching positions in North Carolina. Early on, they were invited to assist private sector clients, often engaging colleagues and students in a collaborative process they labeled "design workshops." These early assignments were the chance to marry the idealism of academia with development realities and to begin a small professional practice. A few years later, Don and Joe relocated the fledgling firm to Aspen and quickly earned a reputation for solving the complex problems found in fragile ecosystems and development challenges of the western landscape.

Over the last 47 years, we have had the opportunity to expand the breadth and sophistication of our firm. Our experience ranges from master plans for counties, planned communities, urban centers and resorts, to detailed design for public parks, residences and roadways. We have continuously honed the collaborative dynamics of the workshops and the pursuit of the ideas and ideals that result in the best solutions for every assignment. This approach remains the hallmark of our firm.

## LEGACY DEFINED

The firm is committed to creating provocative places that meet today's needs and are sustainable for all time. To do so, we practice a methodology called DW Legacy Design®. This proprietary process seeks to imbue every project with a balance between environmental sensitivity, community connections, artistic beauty and economic viability. Projects that achieve this harmony are enduring places that make a difference for clients, society and the well-being of the planet leaving a legacy for future generations.

## PROCESS

Planning and landscape architectural design are linear processes that build on logic and real conditions. Both inside and out, we are committed to the "design workshop" model. Our approach is iterative, engaging all significant constituencies – our clients as well as public agencies, concerned citizens and special interests. We have perfected our communications skills to assure success in public acceptance and approvals. Delivering the highest quality is built into the structure of the firm as well as the way we deliver our work. Design Workshop has a defined quality process outlined in our Project Delivery System (PDS) that ensure that a quality plan is developed for each project. Quality standards, training and specific resources are monitored by quality representatives in each of our office locations.

## BEING RECOGNIZED

One measure of our effectiveness is recognition by the industries we serve and from our peers. We have received scores of awards for our design and planning accomplishments from organizations including the Urban Land Institute, the Congress for the New Urbanism, the American Society of Landscape Architects and the American Planning Association. We are dedicated to giving back to our communities. We have established the DW Foundation, which donates time and materials to select community projects. Also, our people contribute significantly to teaching, professional associations and other professional activities.

## DENVER OFFICE

1390 Lawrence Street  
Suite 100  
Denver, CO 80204  
303.623.5186

## YEARS IN BUSINESS

Est. 1969

## PROJECT MANAGER & PRIMARY CONTACT

Josh Brooks  
720.907.9348  
jbrooks@  
designworkshop.com

## TOTAL STAFF

110

## OFFICES

Asheville  
Aspen  
Austin  
Chicago  
Denver  
Dubai  
Houston  
Lake Tahoe  
Los Angeles  
Shanghai

## SERVICES

Landscape Architecture  
Planning  
Urban Design

[designworkshop.com](http://designworkshop.com)



# DW LEGACY DESIGN®

DW Legacy Design® is a comprehensive approach to planning and design delivering measurable project outcomes in the areas of environment, community, economics and art. These four values broaden the concept of triple-bottom-line accounting by including art or aesthetics which are essential to human meaning and the spirit of place. The idea is symbolized by four overlapping circles, one for each element. The center of these rings, where the four are in balance, result in the ideal profile for a project. If a project begins with a heavy emphasis on one element, the process seeks to move it as close to the center as possible to broaden its impact.

## ENVIRONMENT

Human existence depends on recognizing the value of natural systems and organizing its own activities to protect them. Design should fit the purpose to the conditions of the land in ways that support future generations, driving value long-term.

## ECONOMICS

Projects must be financially sustainable to last multiple generations. Projects that are socially and environmentally responsive are, in the long term, the most economically successful.

## COMMUNITY

Projects must contribute to the quality of life of the people who use them and who are affected by them. They shall be regenerative, seeking to repair damage to the community fabric where it exists and lifting up the lives of those who are influenced by them. The design of the built environment should foster connections and interaction among families, groups, towns, cities and nations.

## ART

Beauty is a timeless quality. It boosts economic value, supports viability, attracts capital and contributes to a project's longevity. Our design process seeks new aesthetic solutions, while at the same time producing works that are not merely provocative or sensational. Timeless works provide meaning and enjoyment for passing generations and endure temporary styles or shifting fads.



# PERFORMANCE BASED DESIGN

The DW Legacy Design® process is defined by four guiding principles. The sequence of the design activities are highlighted below.

## **GATHERING INFORMATION**

The first step of the design process is to gather and assemble the facts in order to understand the issues and opportunities surrounding the project.

## **CRITICAL SUCCESS FACTORS (CSFS)**

The team must identify and confirm the client's critical success factors, which are the elements that absolutely must happen and must be an outcome of the process in order for them to consider the project a success.

## **LEGACY FOUNDATION BUILDING**

The DW Legacy Design® method builds a narrative foundation for a project and then sees the various components of that narrative (i.e. dilemma, thesis, narrative principles and goals) take shape in plans. A dilemma is a storytelling device that describes a project's predicament. It sums up the major challenges that must be reconciled to achieve a Legacy outcome. Beginning with a discussion of the project's context, it answers the question: "What is standing in the way of a project's potential for success?" A dilemma renders vivid the complexities of the project and the need for a comprehensive solution. A thesis is an assertion about the project outcome that will be tested and resolved through the team's design and planning investigations. It is a proposed solution to the central problem or question stated in the dilemma. Collectively articulating the big idea of the project aligns the team to a common goal or story.

## **DW LEGACY DESIGN® METRICS**

Legacy Metrics are a discovery-oriented tool to shape a collective point of view about a project's aspirations. They help us to develop more thorough design solutions by setting goals, integrating strategies from all four circles and measuring outcomes. Metrics help clients understand how DW Legacy Design® will positively impact their project. Metrics lead to a distilled set of goals that are applied to design solutions resulting in physical outcomes that evidence the comprehensive direction set by the team. The setting of Legacy goals is an iterative process that requires research into baselines and benchmarks in order to reach realistic aspirations and outcomes.



# ABOUT SCHEMMER

## **Our Mission:**

We enable our clients to define and achieve their goals by providing comprehensive design and construction-related services in a professional and personal manner.

## **Design with Purpose. Build with Confidence.**

There is no rule – unwritten or otherwise – that says the creation of something that is unique, yet functional, need be problematic and stressful. Which is why the men and women of Schemmer take the opposite tact, infusing the design and construction process with a collaborative spirit that forges a unified sense of purpose and confidence among all involved. It begins with designing a project that meets our client's goals before a single shovel of dirt is turned over, and doesn't end until we verify that every promise put to paper is included in the final build. So when you engage the Schemmer team, you know we'll work harder and smarter to ensure that when all is said and done, it will be done better than you ever imagined.

Schemmer is a full-service architecture, engineering and construction field services consultant, providing responsible solutions for complex design and construction-related challenges. Founded in 1959, we are grounded in our past but remain fully committed to the future. Located in three States and six offices throughout the Midwest, Schemmer is providing services to clients from coast-to-coast and border-to-border across the United States.

## **Solutions that reflect your needs.**

No two municipalities are alike. Whether we are working for large urban agencies or small rural communities and counties, we understand that providing effective solutions takes knowledge, collaboration and flexibility. Schemmer professionals help analyze the cost-effectiveness of operational procedures for a variety of infrastructure and facility projects that a municipality oversees. Our experience with municipalities ranges from water and sewer conveyances, water main systems, channel improvements, street rehabilitation, facilities, to urban development.

## **OFFICE ADDRESS**

1044 North 115th  
Street, Suite 300  
Omaha, NE 68154  
402.493.4800

## **YEARS IN BUSINESS**

Est. 1959

## **PROJECT MANAGER & PRIMARY CONTACT**

Charles Huddleston  
402.431.6306  
chuddleston@  
schemmer.com

## **TOTAL STAFF**

99

## **OFFICE LOCATIONS**

Omaha, NE  
Lincoln, NE  
Council Bluffs, IA  
Des Moines, IA  
Oklahoma City, OK  
Tulsa, OK

## **SERVICES**

Architecture  
Structural Engineering  
Mechanical Engineering  
Electrical Engineering  
Civil Engineering  
Transportation  
Engineering  
Water/Wastewater  
Engineering  
Geotechnical  
Engineering  
Construction Materials  
Testing  
Construction Special  
Inspections  
Surveying  
Construction Staking  
Construction Contract  
Administration

# SCHEMMER

*Design with Purpose. Build with Confidence.*

# ABOUT LCS TRANSPORTATION CONSULTANTS

LSC Transportation Consultants, Inc. provides consulting services in all phases of transportation planning and traffic engineering throughout the western United States

With three offices in Colorado and California, the goal of the firm is to perform highly competent planning and engineering services within the transportation field. The firm is the successor to Leigh, Scott and Cleary, Inc. and has provided consulting services continuously since 1975.

LSC's clients include government agencies, institutions, private organizations and individuals. We specialize in:

- Traffic engineering
- Complete Streets design
- Multi-modal transportation planning
- Transit planning and operations
- Parking analysis
- Parking facility design
- Traffic impact studies
- Access planning and design
- Roundabout analysis and design
- Bicycle/pedestrian circulation

The firm's strength lies in the staff's broad range of professional experience. With a current staff of 30, the firm includes engineers, planners, and technical support personnel. Our staff includes professional engineers registered in the states of California, Nevada, Arizona, Utah, Colorado, and New Mexico, and planners who are members of the American Institute of Certified Planners. Transportation planning and traffic engineering studies requiring a timely, personal response by experienced professionals are the company's specialties. We take pride in offering the sensitivity, flexibility, and innovative ability that small firms characteristically best provide.

## OFFICE ADDRESS

1889 York Street  
Denver CO 80206

## YEARS IN BUSINESS

42

## PRIMARY CONTACT

Gordon R. Shaw  
530-583-4053  
gordonshaw  
@lsctahoe.com

## TOTAL STAFF

30

## OFFICE LOCATIONS

Denver

Colorado Springs

Lake Tahoe

## SERVICES

Traffic Engineering

Transit Planning

Transportation Facility  
Design

Bicycle and Pedestrian  
Planning

Parking Planning and  
Design



# ABOUT HINES INC

Hines is a focused, driven, agile group of Engineers & Designers committed to **site water resource management and irrigation system design**. With offices in Colorado and Arizona, Hines has worked in some tough climactic regions, and are well placed to offer sustainable solutions to a variety of challenges. One of Hines's core strengths is an ability to assimilate well with a team, to offer key support while balancing the many design and implementation factors latent in a complex projects.



## COMPANY INTRODUCTION

Hines was formed in the State of Colorado to provide professional irrigation consulting and design services to Municipalities, State and Federal agencies, Contractors, Land Developers, Landscape Architects, and Civil Engineering firms throughout the western U.S. Our reputation quickly grew by providing creative solutions to difficult design and construction challenges. In 2004, Hines opened an office in Phoenix, Arizona to serve a growing clientele in managing their irrigation water resources in the challenging Desert Southwest, Texas, and California.

Our reputation is based upon the delivery of quality, and cost-effective design services - on time. Applying engineering principles to the design of efficient water delivery, mechanical systems, & sprinkler irrigation systems, we have successfully addressed the water management needs of a wide variety of clients. Typical projects include: Raw Water Transfer, Storage & Delivery, Reservoir Design & Canal Revitalization, Reclaimed Water Irrigation Systems, Park Development, Pumping Station Design, Water Feature Mechanical Design & Irrigation System Design.

## OFFICE ADDRESS

323 W. Drake Rd.  
Suite 204  
Fort Collins, CO 80526  
970.282.1800

1110 E. Missouri Ave.  
Suite 380  
Phoenix  
Arizona 85014  
602.240.9800

## PRIMARY CONTACT

Nate Hines  
970.282.1800  
nate@hinesinc.com

## HINES PROJECT EXPERIENCE

### Fort Collins Streetscape Projects -

North College Avenue Improvements, Harmony Road & Ziegler Road intersection and medians, Harmony Road & Timberline Improvements; Harmony Road Improvements-College Ave to Seneca Drive; Mason Street Improvements North of Mountain Ave.

### Brighton Boulevard Improvements

- Denver, CO - Hines was engaged to provide master planning & sustainable irrigation system Construction Documents for this 5-mile, neighborhood revitalizing streetscape improvement project in the Rino District in Denver.

**Gondola Square** - Aspen, CO - Hines engineers assisted with the renovation of Gondola Square. Specific attention was paid to coordinating irrigation system renovations in accordance with City of Aspen standards & protecting existing trees through construction.

**Lincoln Corridor** - Fort Collins, CO - This exciting project provides pedestrian access

from downtown Fort Collins to residential & craft brewery locations just east of downtown. Hines engineers provided specific, intricate design detailing typical of pedestrian streetscape projects & water conserving irrigation system design.

### Linden Street Improvements Project -

Fort Collins, CO - Hines Engineers were honored to take part in this streetscape project with the City of Fort Collins. Specific design included over 1,100 linear feet of urban streetscape irrigation design to various point-source drip irrigated planting elements. All design plans, details, specifications & cost estimates items were prepared in accordance with City & CDOT requirements.

### Peachtree Plaza - Atlanta, Georgia -

Following a rigorous national competition, Hines was part of the team selected to provide planning, engineering, & design for an innovative restoration of this signature downtown plaza. Hines is visioning water feature & irrigation systems which will utilize harvested water sources.

## TOTAL STAFF 8

## OFFICES Fort Collins Phoenix

## SERVICES Irrigation Design

# ABOUT CLANTON & ASSOCIATES, INC

Clanton and Associates, Inc. is an award-winning design firm that specializes in sustainable lighting design. The firm has been committed to environmentally sensitive design for over 30 years. Clanton & Associates has participated in over 3000 design projects of all types and sizes.

Clanton & Associates employs 11 full time people including two registered engineers, and three senior designers. Three design staff members are LEED Accredited Professionals.

The firm has successfully developed outdoor urban lighting designs to illuminate various streetscapes, pedestrian malls, architectural facades, town squares, landscape features, public art, bridges, roadways, and parking areas.

Clanton & Associates has worked on numerous street and roadway projects including developing lighting guidelines, master plans, full designs and control strategies for communities, developments, states, universities, and colleges. Additionally, our visibility research has led to street lighting criteria development for many municipalities.

With a design process that focuses on creating nighttime environments of the highest quality, unwanted glare, light pollution, and light trespass are minimized, we collaborate with the client and design team to satisfy the unique goals of each individual project. Firm members participate in the research and development of new lighting standards and apply the most current visibility criteria to each project. By aligning projects with future technology and ongoing research, Clanton & Associates provides beautifully integrated design solutions which save energy, are easy to maintain, and enhance visibility.

## URBAN STREETSCAPE AND PUBLIC REALM PROJECTS

- 16th Street Mall Light Replacement, Denver, CO
- Denver Union Station and Light Rail Terminal Plaza, Denver, CO
- Tennyson Street, Denver, CO
- 14th Street Improvements: Market to Colfax, Denver, CO
- 38th and Blake Streets Sidewalk Improvements, Denver, CO
- Old Town Square Renovation, Fort Collins, CO
- The Hill District, Boulder, CO
- Downtown Alleyways, Fort Collins, CO
- Vail Streetscapes, Vail, CO
- River North Promenade, Denver, CO
- Downtown Westminster Central Plaza and Streetscapes, Westminster, CO
- Superior Town Center, Superior, CO
- Downtown Pedestrian Mall Improvements, Aspen, CO

## OFFICE ADDRESS

4699 Nautilus Court S.  
Suite 102  
Boulder, CO 80301  
303.530.7229

## YEARS IN BUSINESS

Est. 1981

## PROJECT MANAGER & PRIMARY CONTACT

David Roederer  
303.530.7229  
david@clantonassociates.com

## TOTAL STAFF

11

## OFFICE LOCATIONS

Boulder, Colorado

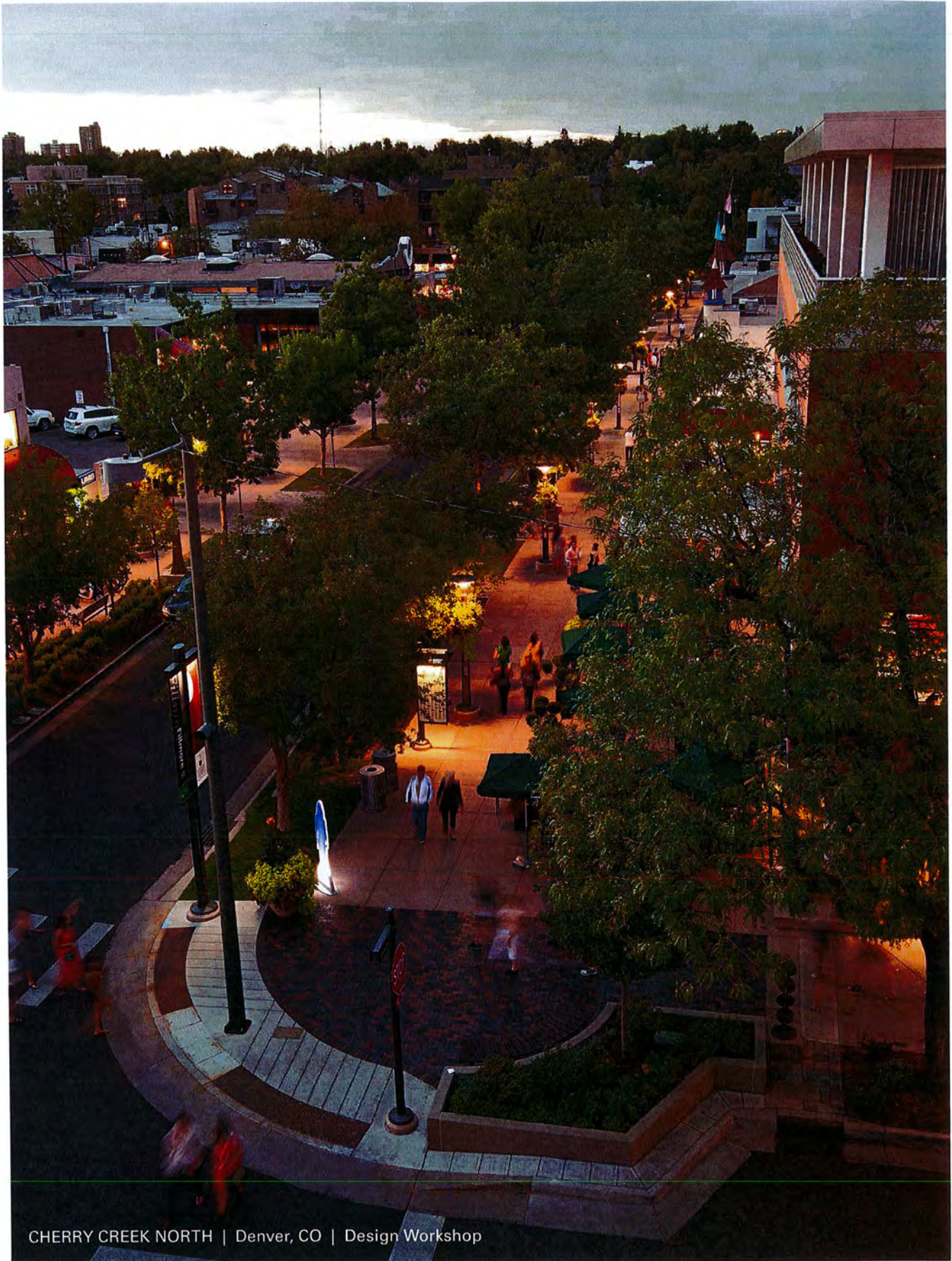
## SERVICES

Lighting Design

Research and Policy

Lighting Master Planning





CHERRY CREEK NORTH | Denver, CO | Design Workshop

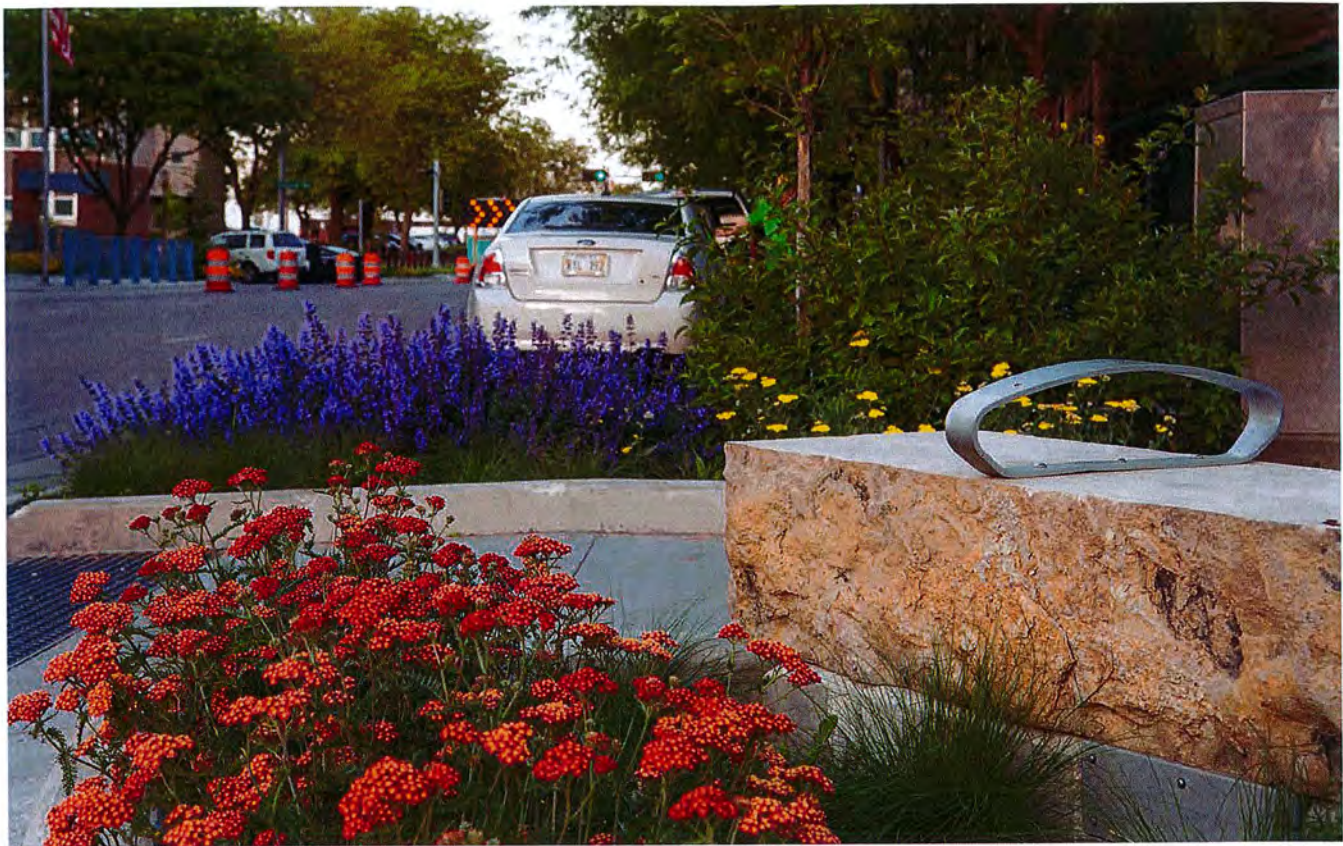
# PROJECTS

While our firm works on a wide variety of projects types, the team represented within this proposal specializes in streetscape and corridor design. We practice on a national level with cities similar to La Vista and have a track record of delivering streetscape designs that solve issues and serve as community indicators. We are both designers and planners and understand the multiple scales of impact that streets have on a community.



## LINCOLN P STREET

DESIGN WORKSHOP + LSC | LINCOLN, NEBRASKA



Design Workshop lead a large multi-disciplinary design team of traffic engineers, graphic designers, local landscape architects and civil engineers, lighting designers and retail consultants to create a comprehensive master plan for this 26-block portion of downtown Lincoln. Through detailed analysis the team was able to reconfigure the street cross section and increase the pedestrian and bike facilities without changing the LOS.

This master plan included an extensive public outreach effort, including public meetings and an online forum aimed at developing ideas for transit solutions, public art programs, building setbacks and first floor land use, retail development strategies, open space creation, and pedestrian realm detail design.

The corridor traverses four major areas of downtown including an historic train depot district, a retail-centric area, a prominent linear park, and an up-and-coming residential area adjacent to a large regional park. The design team also developed detailed design and construction documentation for a six block portion of the master plan that encompasses the "Retail Core".

This detailed design integrates a number of sustainable and custom elements including street side rain gardens that capture water from the street and sidewalks, native limestone benches, lighting banner poles, and permeable paving.

### SERVICES PROVIDED

Master Planning, Urban Design, Landscape Architecture, Public Outreach + Facilitation

### REFERENCE

Terry Uland  
President  
Downtown Lincoln Association  
402-434-6905  
tuland@downtownlincoln.org

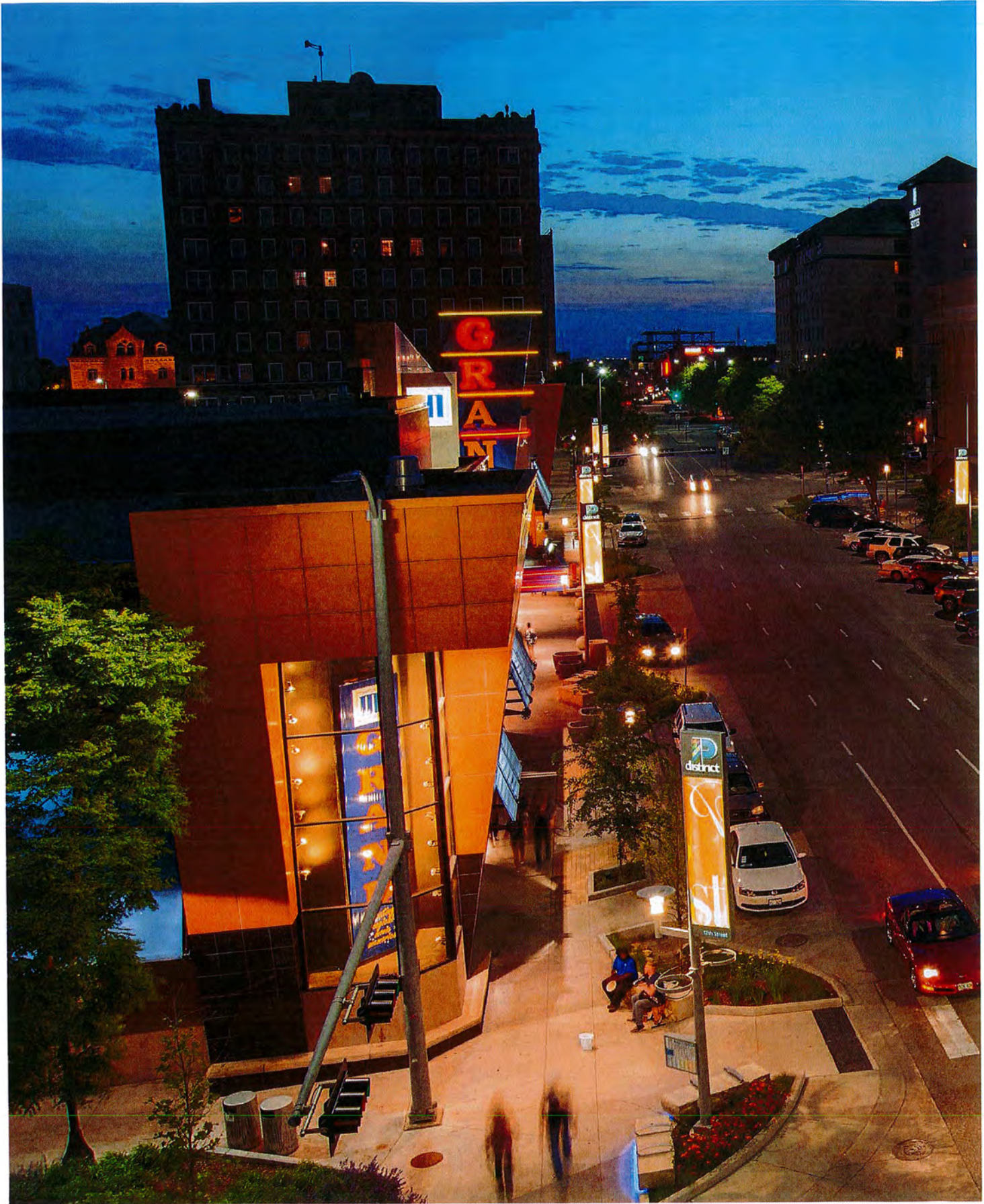
2013 COLORADO CHAPTER OF THE AMERICAN  
SOCIETY OF LANDSCAPE ARCHITECTS MERIT  
AWARD FOR PLANNING

2014 LINCOLN MAYOR'S AWARD















# UPTOWN HOUSTON POST OAK BOULEVARD RECONSTRUCTION

DESIGN WORKSHOP | HOUSTON, TEXAS



## KEY

- |   |  |   |
|---|--|---|
| 1. Inverness - 800 Post Oak                   | 14. Air Liquide - 5050 Westheimer            | 27. Zadok - 1801 Post Oak                               |
| 2. Post Oak Tower - 1200 Post Oak             | 15. Williams Tower - 2800 Post Oak           | 28. Levine/Pappas - 1717 Post Oak                       |
| 3. Four Oaks Place - 1300 Post Oak            | 16. Water Wall                               | 29. Levine/Pappas - 1717 Post Oak                       |
| 4. BHP Billiton - 1300 & 1550 Post Oak        | 17. NW/C Richmond @ Post Oak - 5000 Richmond | 30. Levine/Pappas - 1717 Post Oak                       |
| 5. Cosmopolitan - 1600 Post Oak               | 18. Hidalgo Pond - 3111 Post Oak             | 31. Levine/Pappas - 1701 Post Oak                       |
| 6. AmREIT - 1650 Post Oak                     | 19. SE/C Post Oak & Hidalgo                  | 32. Icon Bank - 4920 San Felipe                         |
| 7. Boulevard Place North - 1702-1800 Post Oak | 20. Metro - NE/C Post Oak & Hidalgo          | 33. Willie G's - 1605 Post Oak                          |
| 8. Apache - 1702-1800 Post Oak                | 21. GUIC - 2801 Post Oak                     | 34. Randall Davis - 3030 Post Oak                       |
| 9. Boulevard Place South - 1702-1800 Post Oak | 22. Dillard's - 4925 Westheimer              | 35. McDonald's - 1405 Post Oak                          |
| 10. Cousins - 1980 & 2000 Post Oak            | 23. Voss/Tanglewood - 2521 Post Oak          | 36. Uptown Post Oak Apartments - 1111 Post Oak          |
| 11. Redstone Land - 2200 Post Oak             | 24. Tanglewood - 2019-2521 Post Oak          | 37. Prosperity Bank - 1101 Post Oak                     |
| 12. Redstone Office - 2120 Post Oak           | 25. Doubletree - 2001 Post Oak               | 38. Post Oak Houston Real Estate Holding - 777 Post Oak |
| 13. Weingarten - 5000 Westheimer              | 26. Lefts on Post Oak - 1901 Post Oak        | 39. SW/C Post and Loop 610 - 755 Post Oak               |







#### SERVICES PROVIDED

Urban Design, Landscape Architecture, Signage and Wayfinding, Permitting

#### REFERENCE

John Breeding  
District President  
Uptown Houston  
713.623.2011  
[jrbreeding@uptown-houston.com](mailto:jrbreeding@uptown-houston.com)

Design Workshop was hired in 2013 to design the renovation of Post Oak Boulevard, a two mile long district street in the heart of Uptown Houston. The main goal of the project was to transform Post Oak Boulevard and Uptown Houston into an active garden district. The new reinvented district will include the grandest boulevard in the region, large shaded sidewalks, an iconic median with a dedicated bus rapid transit lane, and artistic shade and station stops at each intersection. Design Workshop was the lead landscape architect on the team and took the project from conceptual design to construction documentation.



## SOUTH BROADWAY (ARIZONA TO EXPOSITION)/ INTERSTATE 25 INTERCHANGE

DESIGN WORKSHOP | DENVER, COLORADO



As part of a team to improve South Broadway's alignment, intersections and access to Interstate 25, Design Workshop emphasized pedestrian and bike mobility through streetscape improvements and place-making strategies. Currently, pedestrians and bicyclists are challenged by a lack of continuity, uncomfortable environments and safety issues—both within the corridor and as passing through it when accessing the multi-modal Broadway Station, South Platte River trails and neighborhood open spaces. The project anticipates the transformation of this formerly industrial area to a dense mixed-use transit-oriented development. Widened sidewalks will accommodate multiple users and provide safer connections within the corridor and to nearby designated bike routes. Streetscape elements will add uniformity to the blocks, forge an identity for the future district and create a more comfortable shaded environment.

Design Workshop also led the sustainability effort of the project, convening a sustainability workshop to engage the multi-disciplinary consultant team and City and County of Denver staff in a discovery process that defined comprehensive sustainability goals aligned with the city's sustainability initiatives. DW captured the iteration of these goals, helped develop strategies and identify costs and benefits, and targeted quantifiable results to ensure that the team adhered to the sustainability process through the design and documentation effort.

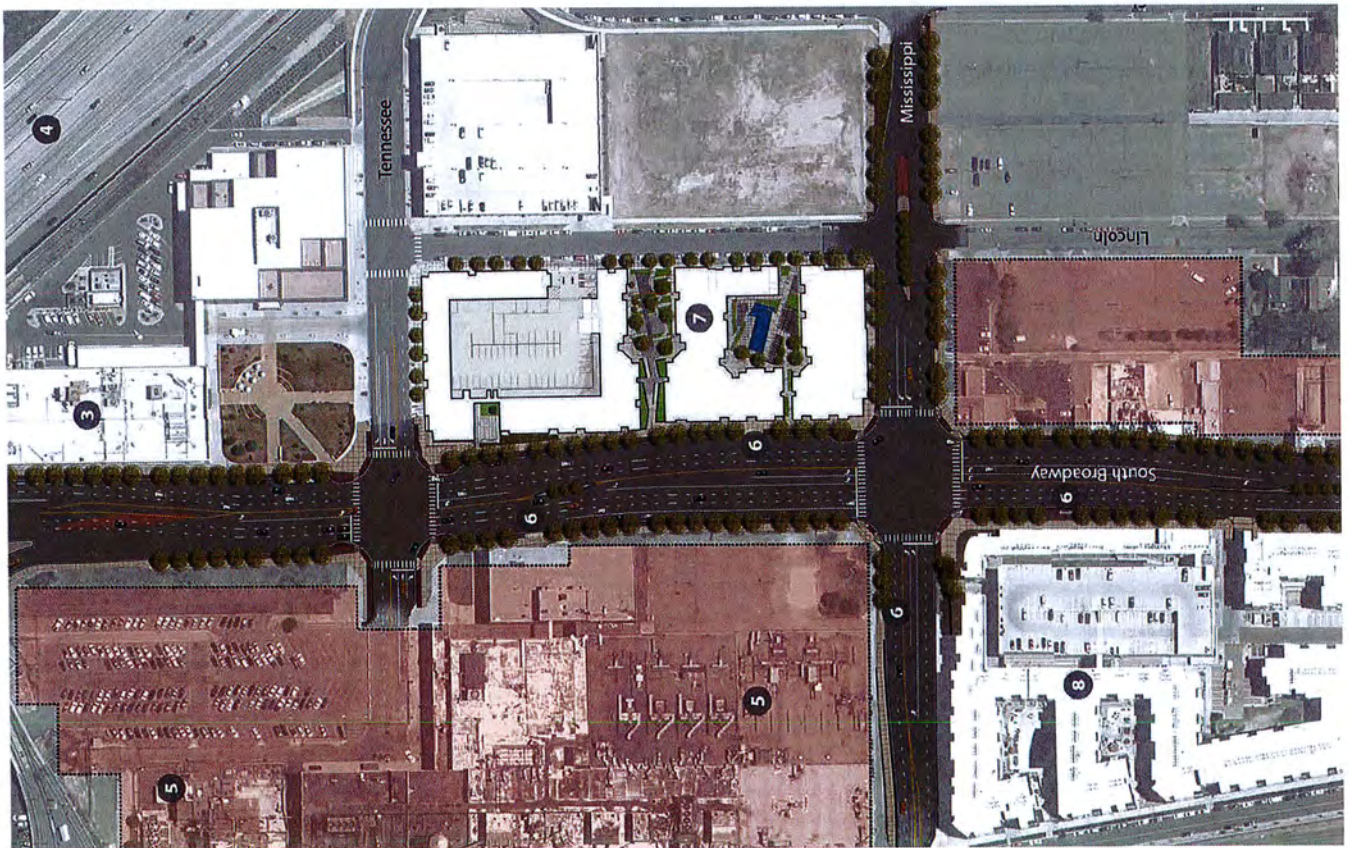
### SERVICES PROVIDED

Streetscape Design and Place-making, Walkability, Connectivity and Multi-modal Strategies, Sustainability Effort Lead for Multi-disciplinary Team Public Outreach, Visualization

### REFERENCE

Karen Good  
Project Manager II, Denver Public Works/Policy  
City & County of Denver  
720.865.3162  
[karen.good@denvergov.org](mailto:karen.good@denvergov.org)







## BAGBY STREET RECONSTRUCTION

HOUSTON, TEXAS



The Bagby Street reconstruction project in Houston's central Midtown district represents a renewed effort by the district to connect with their current demographics, modern infrastructure demands, and long term sustainability goals. The project envisioned a highly programmed, pedestrian-friendly environment that encouraged private re-investment in the area, as well as a high level of service for current residents.

Goals for the project relate to limiting disturbance to local businesses during streetscape reconstruction, return on infrastructure investment for the district, sustainability features such as rain gardens and biofiltration systems, increasing human comfort through shade trees and additional seating opportunities, and reduction of operational/maintenance burdens on the community. Although the scope of the project is limited to the physical reconstruction of the right-of-way, the team used a comprehensive master planning and analysis approach to ensure the proposed work matched current land uses, related to future redevelopment opportunities, and was responsive to local demographics.

### SERVICES PROVIDED

Master Planning, Urban Design, Landscape Architecture, Experiential Graphic Design for Signage & Wayfinding

### REFERENCE

Matt Thibodeaux  
Executive Director  
Midtown Redevelopment Authority (MRA)  
713-526-7577  
mattt@houstonmidtown.com

2013 AMERICAN COUNCIL OF ENGINEERING CONSULTANTS TEXAS HONOR AWARD

2013 SILVER CERTIFIED GREENROAD®

2014 TEXAS ASLA AWARD OF EXCELLENCE FOR DESIGN: CONSTRUCTED PROJECTS

2014 NATIONAL AMERICAN COUNCIL OF ENGINEERING COMPANIES HONOR AWARD

2014 TEXAS ASLA MERIT AWARD IN COMMUNICATION

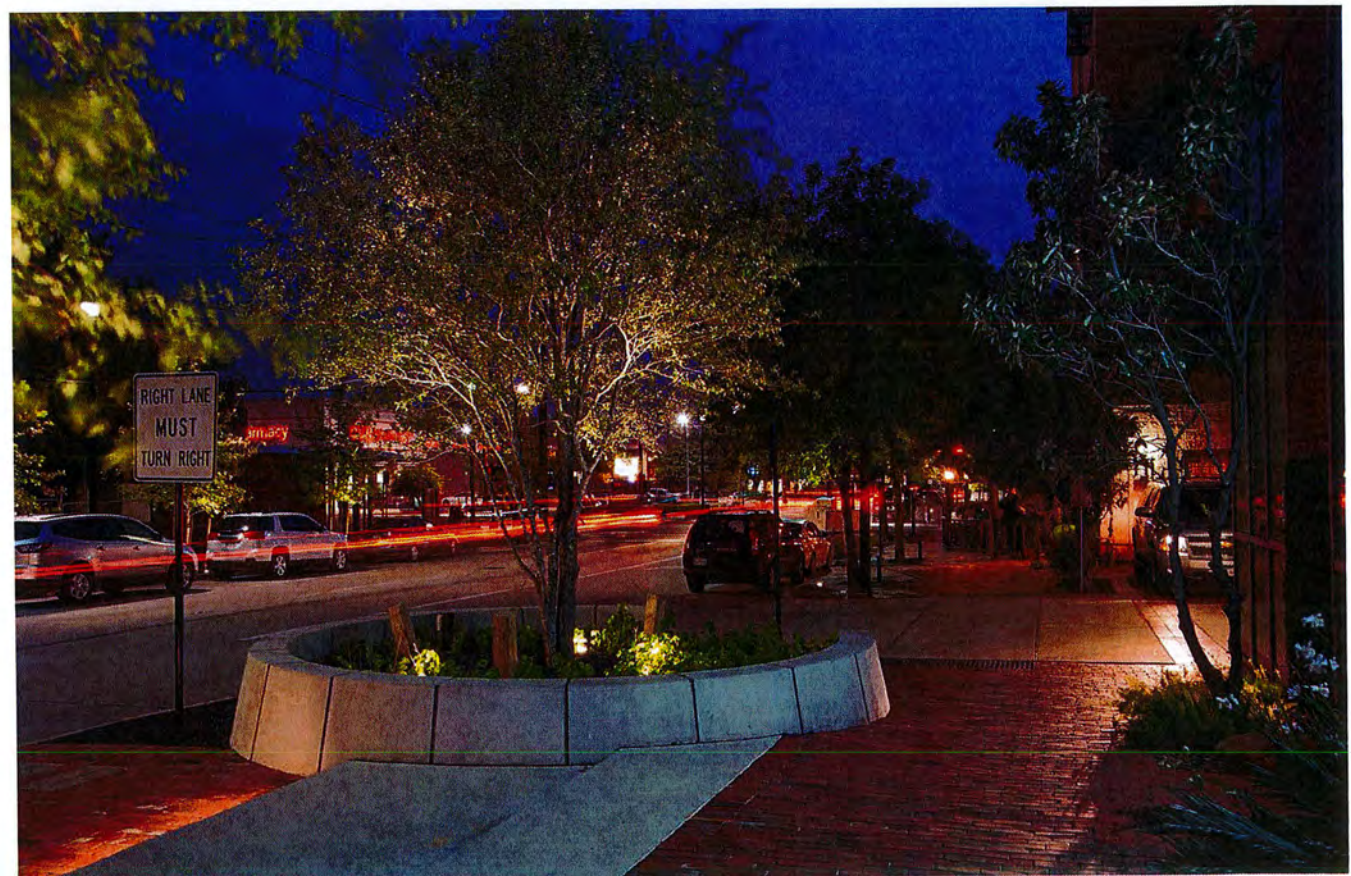
2014 INTERNATIONAL MAKING CITIES LIVABLE, LLC ACTIVE MOBILITY/COMPLETE STREETS AWARD

2014 TEXAS CHAPTER OF THE AMERICAN PUBLIC WORKS ASSOCIATION PUBLIC WORKS PROJECT OF THE YEAR

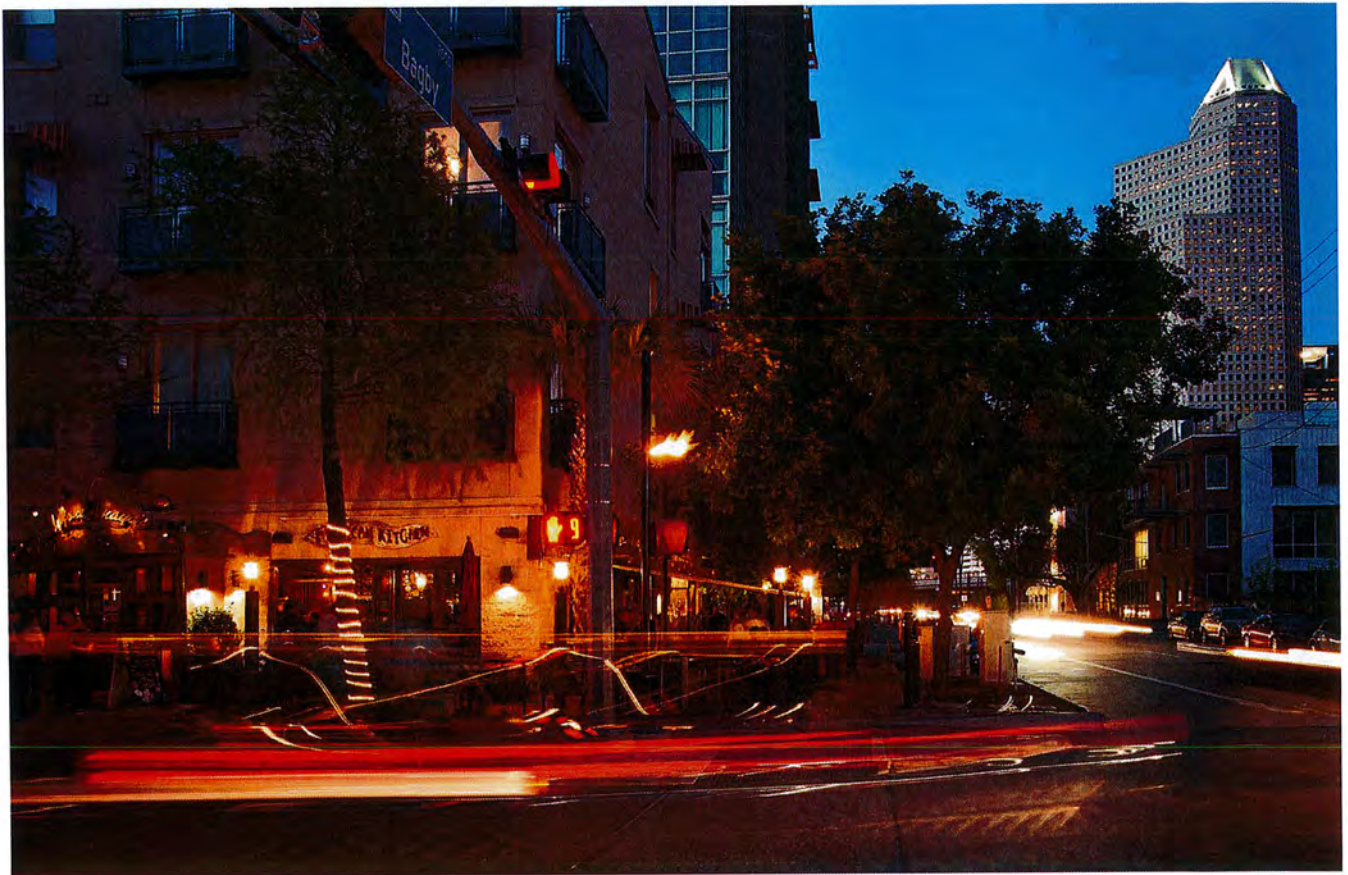
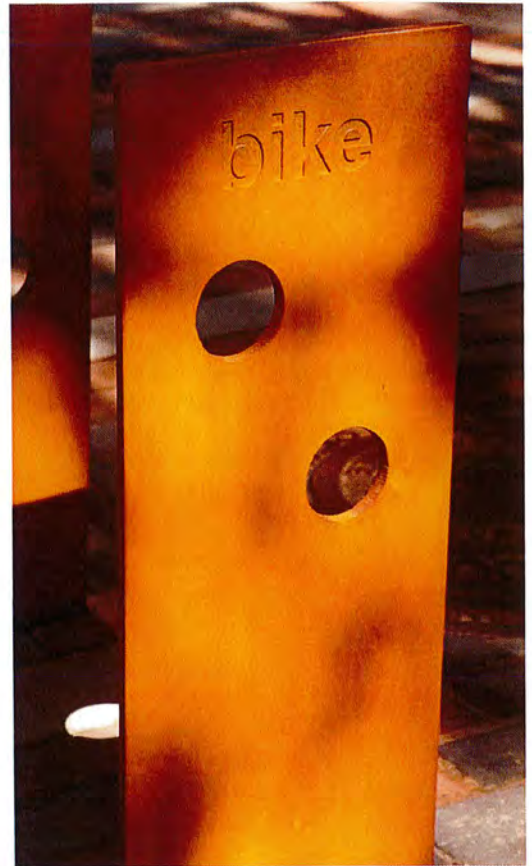














## CHERRY CREEK NORTH STREETSCAPES

DENVER, COLORADO



Cherry Creek North is a premier outdoor retail mixed-use center in central Denver. Together with the Cherry Creek Mall it has become the most popular tourist destination in Denver and it has always been well-loved by locals for its urban village ambiance and mix of small independent shops and national retailers. In 2007 the Business Improvement District members voted to approve the ability to issue \$18.5 million in bonds for capital improvements. One of the challenges is to make improvements to the district without destroying the assets that are still viable. The process involves a wide range of stakeholders including the BID members—which now includes small independent store owners, major national retailers, a luxury hotel operator, office managers, residents and developers—the surrounding residential organizations, the City and County of Denver and the Cherry Creek Mall.

### SERVICES PROVIDED

Urban Design, Landscape Architecture, Signage & Wayfinding, Construction Administration & Observation

### REFERENCE

Julie Underdahl  
President/CEO  
Cherry Creek North Business Improvement District  
303.394.2904  
[julie@cherrycreeknorth.com](mailto:julie@cherrycreeknorth.com)

2011 ASLA COLORADO MERIT AWARD FOR DESIGN

DENVER MAYOR'S AWARD







## WESTHEIMER ROAD - WESTCHASE DISTRICT

HOUSTON, TEXAS



Westheimer Road is a distinguished address in Houston but the character of existing development does not reflect the Westchase Management District's vision for the area. To the west of Beltway 8, "big box" and strip commercial development with large surface parking lots bordering on Westheimer are numerous. Large office towers with deep setbacks are also evident. On the east side of Beltway 8, single family homes back up to the north side of Westheimer, with a mix of commercial strip centers and office towers on the north and south sides.

Though the corridor is primarily used for vehicular travel, the Westchase District believes the right of way can serve as a uniting element between various land uses. Design Workshop is part of the team tasked with creating a sustainable, aesthetically pleasing and comfortable environment for pedestrians, cyclists, transit riders and vehicles while projecting the distinct identity that Westchase desires.

### SERVICES PROVIDED

Master Planning, Landscape Architecture,  
Wayfinding and Signage, Public outreach, Permitting,  
Green Infrastructure Design

### REFERENCE

Jim Murphy  
General Manager  
Westchase District  
713.780.9434  
[jmurphy@westchasedistrict.com](mailto:jmurphy@westchasedistrict.com)







## CITY OF LINCOLN AIRPORT ENTRANCE ROAD

LINCOLN, NEBRASKA | SCHEMMER



In an effort to improve the aesthetics and roadway driving surface for the corridor between the Lincoln Airport and downtown, Schemmer prepared construction documents for a streetscape master plan developed by the Lincoln Parks & Recreation Department and made recommendations, in addition to designing plans for the prioritization of pavement repairs. The success of this project plays a significant role in the economic revitalization of the West Cornhusker Highway and NW 12<sup>th</sup> Street corridor between the Lincoln airport and points of Lincoln south and east of the I-80 and Cornhusker Highway interchange. Schemmer provided the final design for this project, and teamed with The Clark Enersen Partners, who provided the conceptual design.

### SERVICES PROVIDED

Civil Engineering, Landscape Architecture, Surveying

### REFERENCE

Erika Nunes  
City of Lincoln  
901 West Bond Street, Suite 100, Lincoln, NE 68521  
402.441.7711  
[enunes@lincoln.ne.gov](mailto:enunes@lincoln.ne.gov)







## VISION 84 MASTER PLAN, AECOM AND CITY OF LA VISTA

LA VISTA, NEBRASKA | SCHEMMER



A redevelopment/revitalization plan for the 84th Street corridor in La Vista, this visioning process involves working with a group of selected City staff, elected and appointed officials, representative from various agencies and volunteers from the community. The project's scope includes: tour of study area to identify key areas and issues; collect/review data, including maps, development plans, property data, traffic studies, infrastructure, existing City plans and regulations; assist in identifying and gathering data for base maps; assist in identifying and presenting information to targeted outreach groups; schedule speaker series/educational forums; assist with working group meetings and community workshops; coordinate and schedule mobile bus tour for working group; and assist in development and analysis of alternatives, including traffic patterns/circulation and infrastructure analysis.

### SERVICES PROVIDED

Community and Regional Planning, Master Planning, Municipal Engineering, Public Participation Services, Traffic Engineering

### REFERENCE

Douglas Kindig  
Mayor  
City of LaVista, Nebraska  
8116 Park View Blvd, La Vista, NE 68128  
402-331-4343  
Mayor@cityoflavista.org



## STREETSCAPE MANUAL, OMAHA BY DESIGN

OMAHA, NEBRASKA | SCHEMMER



Schemmer's Charly Huddleston volunteered on the committee that created the Omaha Streetscape Handbook standards manual in 2007 and 2008 for Omaha by Design. In collaboration with a diverse task force of representatives from Omaha by Design; the city's parks, planning and public works departments; the American Society of Landscape Architects; the American Institute of Architects; the American Society of Civil Engineers; the American Planning Association; the Omaha Public Power District and the Nebraska Department of Roads; the creation of this standard brought the best practices from other regions of the USA to our Metro area. The handbook evolved from a series of recommendations outlined in Omaha's Urban Design Element to guide its physical development. The publication also includes an album of well-designed streetscapes, along with their performance standards and design considerations, and a chapter on the application of streetscape design to Omaha's Areas of Civic Importance as outlined in the Urban Design Element.

### SERVICES PROVIDED

Implementing Sustainable Practices, Developing Complete Streets, Using Cohesive Design Elements, Promoting Safety and Security, Coordinating Maintenance with Design and Implementation, Protecting and Enhancing Historic Character

### REFERENCE

Omaha by Design  
618 South 11th Street, Omaha, NE 68102  
402-934-7055  
[info@omahabydesign.org](mailto:info@omahabydesign.org)



## CITY OF LINCOLN MOPAC TRAIL PEDESTRIAN BRIDGE OVER 27TH STREET

LINCOLN, NEBRASKA | SCHEMMER



Schemmer provided the final design for a new pedestrian bridge over North 27th Street. The bridge provides a vital connection to the existing trail on the east and west sides of 27th Street. The signature truss span was developed with input from adjacent neighborhoods and contains an arching top chord to provide aesthetic interest. With much of the funding coming from the Transportation Enhancement Program, Schemmer coordinated all design and plan review activities with the Nebraska Department of Roads, following guidelines that govern these types of projects. Schemmer also assisted City of Lincoln staff in communicating with the adjacent businesses to ensure project concerns were adequately met during design.

Schemmer prepared construction bid documents that originated from a master plan developed by the City's Parks & Recreation Department. This project was developed, in part, as an enhancement to the Elaine Hammer Bridge (MoPac Trail over N. 27th Street).

### SERVICES PROVIDED

Construction Engineering Services, Electrical Engineering, Surveying, Transportation Engineering

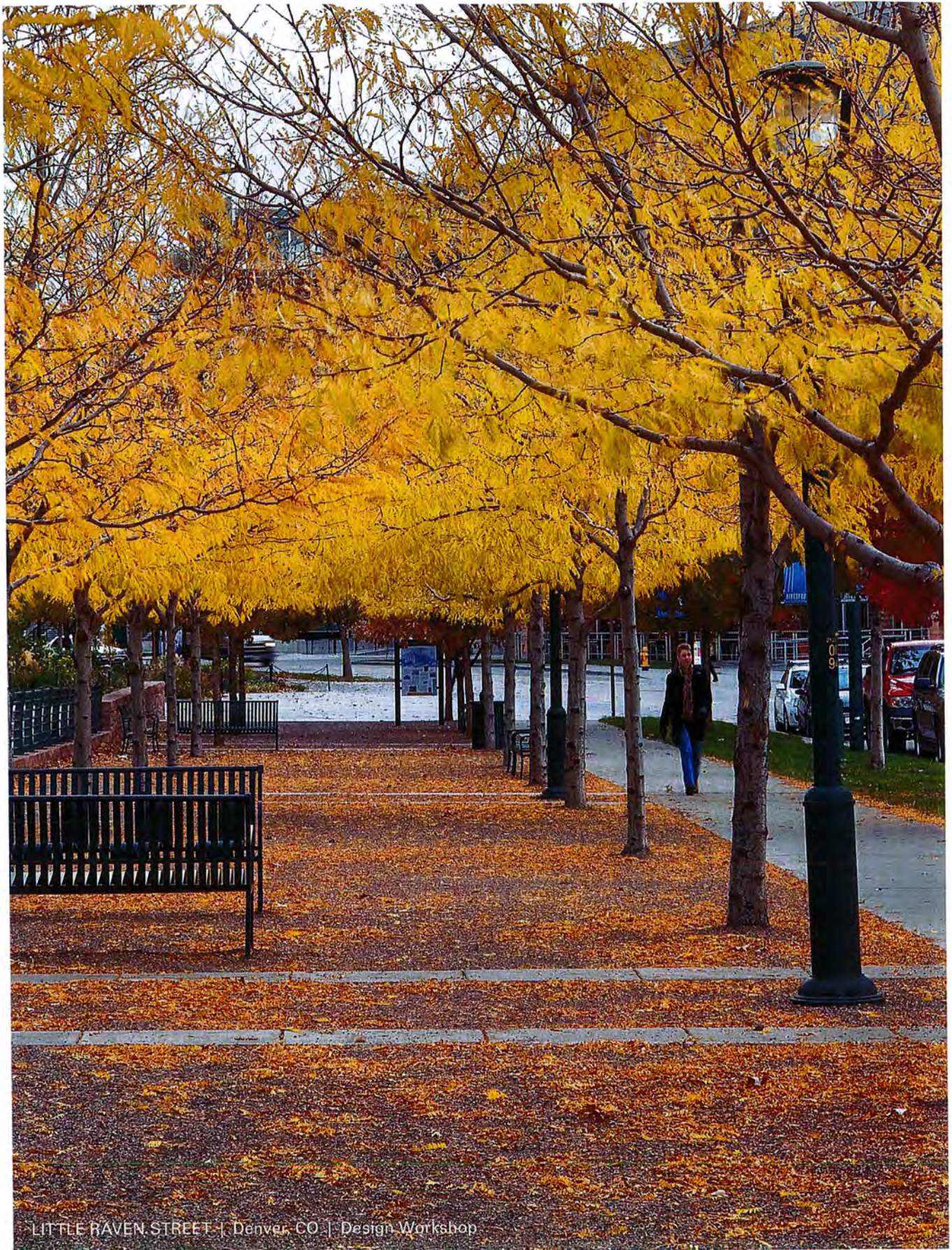
### REFERENCE

Terry Genrich  
Natural Resources Manager  
City of LaVista, Nebraska  
2740 A Street, Lincoln, NE 68502  
402.441.7939









LITTLE RAVEN STREET | Denver, CO | Design Workshop

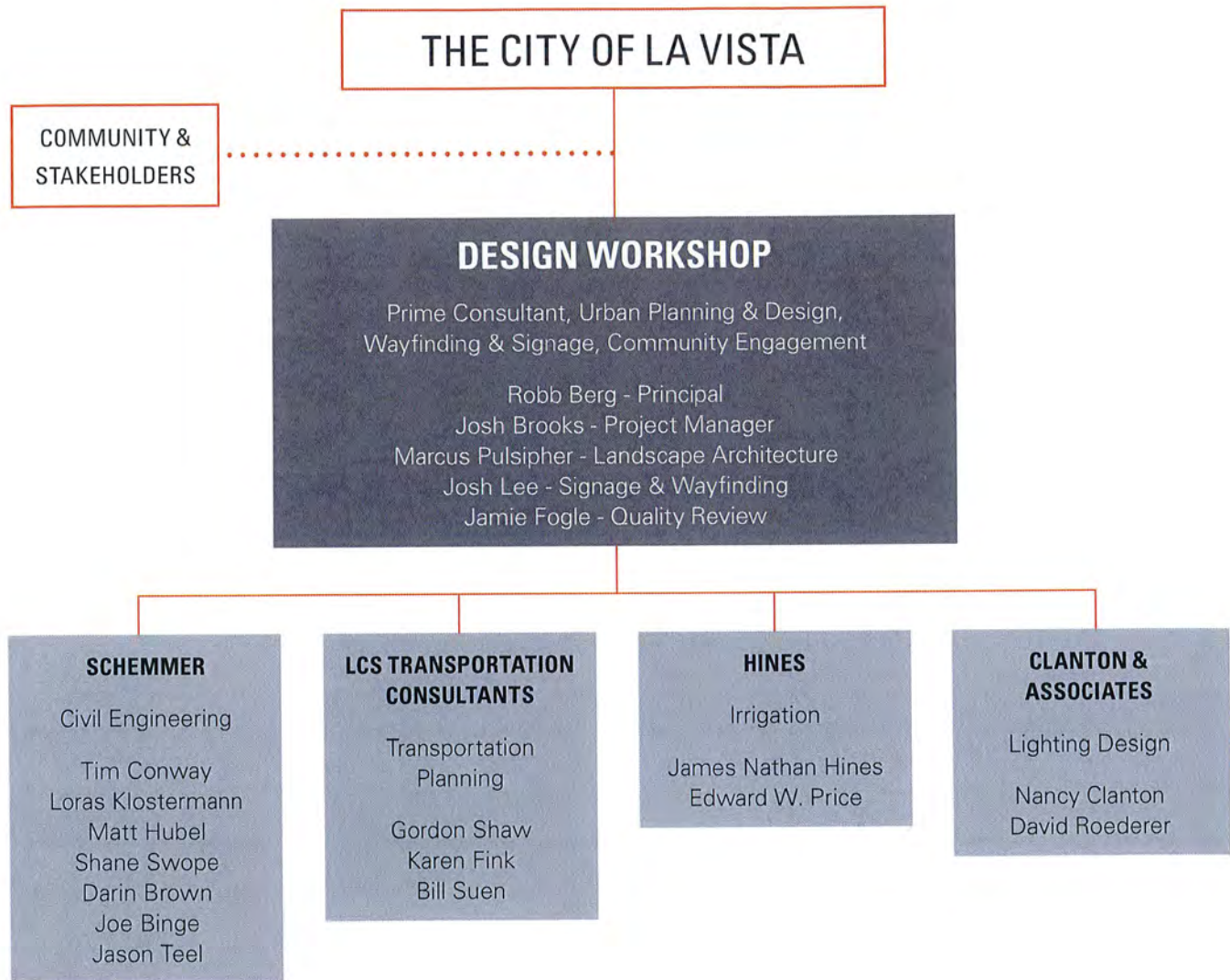


# KEY PERSONNEL

Our team believes in regular coordination and communication with within the team and with the client. This process will be closely led by both Robb Berg and Joshua Brooks, who together are currently leading a number of large streetscape initiatives around the country. Our team is committed to being in La Vista on a regular basis for both public and client meetings. This regular presence will be supplemented by our local engineering partner Schemmer.



## ORGANIZATION CHART



## STAFFING COMMITMENT

Design Workshop is committed to designing, planning and building projects that are a legacy for future generations – providing community, art, environmental, and economic benefits for clients today and for the future. Under this philosophy, we are committed to hiring the best and brightest to help us achieve that goal. Once staff is hired, Design Workshop supports further education or credentialing to insure our staff are in front of the most current information and leaders in our field.

We staff projects not just based upon staff availability but upon staff expertise and interest. Additionally, every phase of each project involves management from Design Workshop's Principal-in-Charge and Project Manager. This allows us to insure direction from our firm's thought leadership and quality control at every step of the process.

Design Workshop and its subconsultants are committed and able to supply the staff in order to complete this work with highest level of customer service.



## ROBB BERG, ASLA, PLA

PRINCIPAL | DESIGN WORKSHOP



On the foundations of design and engineering, Robb Berg has amassed a body of work over the past 15 years that includes the art, science and craftsmanship of built landscapes with a unique understanding of development strategies and complex architectural systems. His design work is influenced by place, an appreciation for function, and guided by a narrative centered on the stewardship to create lasting places of quality that evoke emotion and inspire.

Robb has led the designs of a broad range of projects in the US and abroad. His innovative approach to work has yielded numerous local and national design awards celebrated for their attention to detail combined with an intrinsic passion for quality public spaces. This list includes; streets and parkways, civic plazas and public spaces, mixed-use developments, and historic and natural landscape restorations. Most recently Robb has led the reconstruction of Post Oak Boulevard in Houston and South Broadway in Denver.

### EDUCATION

Certificate Program in Design Entrepreneurship (CDE), Pratt Institute

Immersion I Workshop  
Masters Class, University of Colorado

Bachelor of Landscape Architecture, Iowa State University, College of Design

### PROFESSIONAL AFFILIATIONS

American Society of Landscape Architects (ASLA)  
Chapter Trustee

Urban Land Institute (ULI)

### CERTIFICATIONS/ LICENSURE

Professional Landscape Architect: Colorado, Texas

CSI | Construction Document Technologist

### HONORS AND AWARDS

2016: Post Oak Blvd., ASLA Texas, General Design

2015: NOAA Inouye Regional Center, AIA San Francisco

2014: HK Tamar Complex, ASLA St. Louis, General Design

2008: Sunnen Station, ASLA Colorado, General Design

The strength of Robb's work is partly his keen attention to detail and the result of long-standing client relationships. It is this unique personal connection with Clients that has led to long-standing professional and personal relationships.

### SELECTED PROJECT EXPERIENCE

Houston Stadium District - Houston, Texas

Lewisville Main Street Reconstruction - Lewisville, Texas

Belmar Streetscape Enhancement\* - Lakewood, Colorado

Metropolitan Gardens - Denver, Colorado

29th Street Stapleton\* - Denver, Colorado

Glendale Riverwalk\* - Glendale, Colorado

South Broadway Streetscape — Denver, Colorado

Post Oak Boulevard Reconstruction - Houston, Texas

Westchase District - Westheimer Road Reconstruction - Houston, Texas

Prairie Gateway Streets\* - Commerce City, Colorado

Vintage Township Streets\* - Lubbock, Texas

The Domain Streetscape - Austin, Texas

Scottsdale Quarter Public Realm - Scottsdale, Arizona

1144 15th Street - Denver, Colorado

*\*completed prior to employment with Design Workshop*



## JOSHUA BROOKS, ASLA, PLA

ASSOCIATE | PROJECT MANAGER | DESIGN WORKSHOP



### EDUCATION

Louisiana State University,  
Bachelor's Degree in  
Landscape Architecture, Minor  
Environmental Sciences

### PROFESSIONAL AFFILIATION

American Society of  
Landscape Architects

Downtown Denver Partnership

Urban Land Institute

### AWARDS AND HONOR

2016 CCASLA Merit  
Award, Triangle Plaza and  
Streetscapes

2014 CCASLA Merit Award,  
I-70 EIS Restitching North  
Denver

2013 CCASLA Honor Award,  
Lincoln P Street Master Plan

### CERTIFICATIONS/ LICENSURE

Professional Landscape  
Architect | CO #0001157

LEED Green Associate

CSI | Construction Document  
Technologist

### PUBLICATIONS

Exposure Magazine, Squeezing  
Space from Nothing: A Case  
Study of Lincoln, Nebraska,

Joshua graduated from Louisiana State University with a Bachelor's Degree in Landscape Architecture and a minor in Environmental Planning with a focus on ecological design and planning. Joshua has a diverse professional portfolio in urban planning and site design for projects in Australia, North Africa, and North America. He has received a National ASLA Award in Analysis and Planning for his thesis "Microcosm of America," which offered a 35-year framework plan for San Juan Island, WA as well as a number of recent awards from the Colorado Chapter of ASLA for the P-Street Corridor Master Plan as well as the I-70 Urban Design Framework in North Denver. Joshua has strong ties to academia where he has served as a guest lecture and critic around the country and as a guest author on several publications

As a practitioner, Joshua has a strong passion for the synthesis of culture and ecology and how design can make people more aware of their surroundings. Through his work he seeks to create places of ecological integrity and lasting social significance in both rural and urban settings and at a multitude of scales. His analytical approach to design and planning has created many unique outcomes to complex social, environmental, and technical problems. Joshua is focused on the implementation of human habitat offering both the broad vision and the skills needed to bring those ideas to fruition. His focus recently has been on improving the liveability of urban areas around the country through sustainable urban design and implementation of streets and infrastructure projects.

As a project manager, Joshua believes in proactive management and clear communication. His clients enjoy his excitement, enthusiasm, and attention to detail that he brings to every project.

### SELECTED PROJECT EXPERIENCE

Old Wewatta Streetscape - Denver, Colorado

1144 15th Street - Denver, Colorado

South Broadway Streetscape - Denver, Colorado

P Street Corridor Master Plan and Streetscape - Lincoln, Nebraska

Post Oak Boulevard - Houston, Texas

Federal Boulevard - Denver, Colorado

18 Off North Park - Omaha, Nebraska

I-70 Urban Corridor Design Guidelines- Denver, Colorado

Watermark Tempe Urban District Streetscapes - Tempe, Arizona

Digmon's Creek Highway Alignment and Bridge Design- New South Wales, Australia

Second Street- Castle Rock, Colorado

Lake Mead Parkway- Henderson, Nevada

Block 68 Streetscape -Lincoln, Nebraska



## MARCUS PULSIPHER

ASSOCIATE | LANDSCAPE ARCHITECTURE & URBAN DESIGN | DESIGN WORKSHOP



Marcus Pulsipher, a landscape architect and planner in Design Workshop's Denver office, is a passionate advocate of environmentally and socially responsible design. Marcus has developed a deep appreciation for the power of thoughtful spatial design, and views it as one of the most effective tools shaping the character and nature of our communities and society at large.

Marcus's passion for planning and design started while attending Utah State University where he studied landscape architecture and environmental planning, receiving several awards for his student work. This interest blossomed through his professional work and was further augmented while attending Harvard University's Graduate School of Design where he was awarded the Outstanding Housing Research and Design Prize.

Marcus has extensive experience working on and managing complex projects, interpreting and incorporating the needs of various stakeholders into meaningful solutions. He has worked on a wide variety of planning and design projects, from city-wide initiatives to reduce flooding in low-income areas of Denver, to large-scale greenway and corridor master planning in post-Katrina New Orleans. Marcus has a sincere desire to create places that have a meaningful, positive effect on the lives of the people who live, work and play within them; setting the stage for long term, sustainable community health and well-being.

### EDUCATION

Master of Landscape  
Architecture in Urban Design,  
Harvard University

Bachelor of Landscape  
Architecture - with Honors,  
Utah State University

Associate of Applied Sciences  
- Graphic Design/Illustration  
BYU-Idaho

### CERTIFICATIONS/ LICENSURE

Professional Landscape  
Architect | #0001017

AICP Certified Planner

LEED Accredited Professional

CSI | Construction Document  
Technologist

### HONORS/AWARDS

2015: Outstanding Housing  
Research and Design Prize  
- Harvard University's Joint  
Center for Housing Studies

2013: ASLA Award of  
Excellence for Analysis &  
Planning - Lafitte Greenway

2013: ASLA Colorado Merit  
Award for Analysis & Planning  
- Edgewood

2012: ASLA Colorado Merit  
Award for Analysis & Planning -  
Nuevo Centro Urbano

2007: ASLA Honor Award for  
Student Work

### SELECTED PROJECT EXPERIENCE

Comprehensive Access, Circulation and Streetscape Plan - Great Falls, Montana

Sheridan Quincy Trail Project - Sheridan, Colorado

Santa Fe Park Development - Littleton, Colorado

Lafitte Greenway - New Orleans, Louisiana

North Park Community Vision Plan - Long Beach, New York\*

Temixco: Nuevo Centro Urbano - Temixco, Mexico

Driggs City Center Plaza - Driggs, Idaho

Springwoods Village Park - Houston, Texas

Stormwater Solutions: Platte to Park Hill - Denver, Colorado

Urban Waterways Restoration Project - Denver, Colorado

Basalt Continuous Care Retirement Community - Basalt, Colorado

The Domain - Austin, Texas

Zephyr Mountain Lodge Plaza - Winter Park, Colorado

Horizon Redevelopment - Stateline, Nevada

Edgewood Redevelopment - Stateline, Nevada

*\*completed prior to employment with Design Workshop*



## JOSH LEE

### SIGNAGE + WAYFINDING SPECIALIST



#### EDUCATION

Associates of Art in  
Branding and Identity  
Cornish College of the Arts

Bachelor of Fine Art in  
Graphic Design and Advertising  
Otis College of Art and Design

#### SPEAKING ENGAGEMENTS

Building a Brand  
Otis College of Art and Design

Firm-wide Graphic Designer at Design Workshop, Josh Lee comes from a background of both Advertising and Graphic Design. Trained as a graphic designer with degrees from two of the country's top art schools, Cornish College of the Arts in Seattle and Otis College of Art and Design in Los Angeles, Josh carries the lessons he has learned in school through all of his professional projects. Prior to Design Workshop, Josh worked at a southern California based advertising firm Rubin Postaer and Associates (RPA) as well as in-house at brands such as Yelp!, Nordstrom, Bloomingdales, Belkin International, and Cisco. He is an avid fan of design-in-space and modern architecture and can often be found reading the latest issue of Communication Arts and Dwell.

Josh leads the firms signage, wayfinding, and branding practice on projects including corridor and streetscape design. We keen attention to branding and experience ensures that each project is unique.

#### SELECTED PROJECT EXPERIENCE

Joplin Public Library - Joplin, MO

Breckenridge Peak 8 East - Breckenridge, CO

Story Mill Community Park - Bozeman, MT

Mueller Town Center Park - Austin, TX

Horse Farm Phase - Lafayette, LA

Sloulin Field Airport Redevelopment - Williston, ND

I-70 Design Guidelines - Denver, CO

South Suburban Strategic & Master Plans - Centennial, CO

New Braunfels Comprehensive Plan - New Braunfels, TX

The Villages at Montclair - Montclair, CA

River Ranch County Park - Georgetown, TX

Centennial Parks MP Update - Arapahoe County, CO

Vancouver Parks and Recreation MP - Vancouver, Canada

Meritage Pinecrest - Houston, TX

Westheimer Streetscape - Houston, TX

Walnut Bend Streetscape - Houston, TX

Wheaton Front Street Streetscape - Wheaton, IL

Barefoot Lakes Community - Weld County, Colorado



## JAMIE FOGLE

PRINCIPAL | QUALITY REVIEW | DESIGN WORKSHOP



Jamie Fogle, an associate in Design Workshop's Denver office, has extensive experience in the areas of detailed design and implementation. His sixteen years with Design Workshop have provided him with a broad range of experience, allowing him to work on design projects in the United States and Canada. His work exhibits a solid understanding of the site design process, as well as the intricacies of landscape and public space implementation.

Jamie has been involved with and lead design projects that promote sensitive design to the public space and landscape. These projects include Cherry Creek North, Denargo Market, Triangle Building Plaza and the 16th Street Mall Extension in Denver, Colorado; the Southwestern Pennsylvania World War II Memorial in Pittsburgh, Pennsylvania; and the Eaton World Headquarters in Beachwood, Ohio. Jamie, a graduate of Kansas State University, is a registered landscape architect, a LEED accredited professional and is fully versed in landscape architecture and implementation.

### EDUCATION

Bachelor of Landscape  
Architecture, Kansas  
State University

### LICENSURE

Licensed Landscape Architect:  
Colorado No. 130  
Pennsylvania No. 3004  
Nebraska No. 329

### ACCREDITATIONS / CERTIFICATIONS

LEED Accredited Professional

Construction Documents  
Technology (CDT) Certificate

### PROFESSIONAL AFFILIATIONS

American Society of  
Landscape Architects

### HONORS AND AWARDS

2014: ASLA Colorado  
Professional Awards; General  
Design - Merit Award - Eaton  
Center

2011: ASLA Colorado  
Professional Awards; General  
Design - Fillmore Plaza

2007: ASLA Professional  
Awards; General Design Honor  
Award - Glacier Club

### SELECTED PROJECT EXPERIENCE

East Colfax Streetscape Conceptual Plan - Denver, CO

Block 68 Streetscape - Lincoln, Nebraska

Boulevard One Park - Denver, Colorado

The Domain Streetscape - Austin, Texas

The Meadows Town Center Parks - Castle Rock, Colorado

16th Street Mall Extension - Denver, Colorado

World Trade Center - Denver, Colorado

Cherry Creek North and Fillmore Plaza - Denver, Colorado

Denargo Market Redevelopment - Denver, Colorado

Triangle Building Plaza - Denver, Colorado

1144 15th Street - Denver, Colorado

Eaton Center - Beachwood, Ohio

Frisco Station - Frisco, Texas

Westbrook Station - Calgary, Alberta



## TIM CONWAY, RLS

REGISTERED LAND SURVEYOR | SCHEMMER



With more than 28 years of experience, Tim Conway, RLS, has a vast amount of expertise in all types of land surveying. His survey background includes trails, subdivisions and roadways. Tim is responsible for all field computations and data collections for construction staking, boundaries, topographic surveys, ALTA surveys, subdivision platting, GPS control networks, ground control for aerial mapping, right-of-way acquisition, design surveys, structure monitoring and FEMA elevation certificates. He has been supervising and coordinating survey crews for a number of years and will help handle client requests and monitor budgets. Tim manages Schemmer's internal survey operations and is responsible for the supervision and coordination of the survey crews. He is skilled in the use of GPS, total stations and data collection equipment as well as all survey-related software including Microstation/Geopak, Civil 3D and Trimble Geomatics Office.

### EDUCATION

Certification of Computer  
Aided Drafting, Metropolitan  
Community College

### LICENSURE

Registered Land Surveyor:  
Nebraska, North Dakota

### PROFESSIONAL AFFILIATIONS

Professional Surveyors  
Association of Nebraska

National Society of  
Professional Surveyors

North Dakota Society of  
Professional Land Surveyors

### SELECTED PROJECT EXPERIENCE

City of Lincoln West O Street Streetscape - Lincoln, Nebraska

City of Lincoln Airport Entrance Road - Lincoln, Nebraska

City of Papillion Washington Street, Reconstruction - Papillion, Nebraska

Metro Crossing Site Development - Council Bluffs, Iowa

Mid America Center Site Development - Council Bluffs, Iowa

230th and Capehart Road Improvements - Sarpy County, Nebraska

Iowa DOT Highway U.S. 65 over Middle Creek - Warren County, Iowa



## LORAS KLOSTERMANN, P.E.

GEOTECHNICAL ENGINEER | SCHEMMER



Loras Klostermann, P.E., brings 33 years of related Geotechnical and testing experience to Schemmer and is well respected within his profession and by his clients. He is very skilled in coordinating and conducting a wide range of soil behavior analyses, as well as monitoring the design of soils related to foundations, roadway grading and site grading. Loras also has extensive experience with construction testing of soils, concrete and asphalt, as well as special observation of foundation elements. He is a past officer of the American Society of Civil Engineers, Nebraska Section and has served as a national representative for this prestigious organization. His diverse client base includes numerous architectural firms based in Omaha, Council Bluffs and Lincoln; the City of Omaha; numerous Omaha contractors; Douglas and Sarpy County municipalities; property development firms; 30 engineering firms; Papio-Missouri NRD; U.S. Army Corps of Engineers; Union Pacific Railroad; and Geotechnical/construction materials suppliers.

Loras Klostermann supervises the operations of the Geotechnical and materials testing practice and has provided Geotechnical project management and engineering for clients from the Midwest to the Gulf Coast.

### EDUCATION

Bachelor of Science in Civil Engineering, Iowa State University

Master of Science in Geotechnical Engineering, Iowa State University

### LICENSURE

Professional Engineer: Illinois, Iowa, Kansas, Nebraska

### ACCREDITATIONS / CERTIFICATIONS

HASMAT Training Certificate

### PROFESSIONAL AFFILIATIONS

Geo Institute of ASCE

American Society of Civil Engineers, Nebraska Section

International Society of Soil Mechanics and Geotechnical Engineering

Omaha Engineers Club

ASTM International Committee D18 on Soil and Rock

### SELECTED PROJECT EXPERIENCE

City of Lincoln West O Street Streetscape - Lincoln, Nebraska

City of Lincoln MoPac Trail Pedestrian Bridge over 27th Street - Lincoln, Nebraska

City of Papillion Washington Street, Reconstruction - Papillion, Nebraska

Metro Crossing Site Development - Council Bluffs, Iowa

City of Omaha 120th Street, Stonegate Drive to Roanoke Boulevard - Omaha, Nebraska

City of Omaha 26th and Corby, Clean Solutions for Omaha - Omaha, Nebraska

City of Omaha 84th and Grover Street Bridge - Omaha, Nebraska



## MATT HUBEL, P.E., CPSWQ, LEED AP, BD+C

CIVIL ENGINEER | SCHEMMER



Matt Hubel, P.E., CPSWQ, LEED AP, BD+C, has 14 years of experience in civil engineering and construction, specializing in civil/ site design. Matt's project experience includes site layout design, grading, stormwater quality and management, LEED, sanitary sewer and water utilities, ADA requirements and outdoor athletic facility design. He has produced contract documents and managed projects for clients, both public and private.

### SELECTED PROJECT EXPERIENCE

126th and Giles Papillion Warehouse - Papillion, Nebraska

Pemberly Place Senior Living Community - Lincoln, Nebraska

Peru State College Site Accessibility Study - Peru, Nebraska

North Central States Regional Council of Carpenters Papillion Training Center - Papillion, Nebraska

City of Omaha Northeast Street Maintenance Facility - Omaha, Nebraska

Prairie Corners Five - Papillion, Nebraska

United States Postal Service Shawnee Mission Indian Creek Concrete - Omaha, Nebraska

### EDUCATION

Bachelor of Science in Civil Engineering, University of Nebraska-Omaha

### LICENSURE

Professional Engineer: Iowa, Nebraska

### ACCREDITATIONS / CERTIFICATIONS

Certified Professional in Storm Water Quality

LEED AP, BD+C

### PROFESSIONAL AFFILIATIONS

National Society of Professional Engineers

American Society of Civil Engineers



## SHANE SWOPE, P.E.

TRANSPORTATION ENGINEER | SCHEMMER



Shane Swope, P.E., has more than 24 years of experience in the transportation and civil engineering profession as a designer and transportation engineer. His experience encompasses nearly every phase of project development from preliminary surveying, to corridor studies, through preliminary and final design plans and contract preparation. He has extensive knowledge of roadway and expressway standards in both urban and rural settings and has a working knowledge of federal aid requirements.

### SELECTED PROJECT EXPERIENCE

City of Lincoln 11th Street Streetscape, A Street to Lincoln Mall - Lincoln, Nebraska

Metro Crossing Site Development - Council Bluffs, Iowa

City of Omaha 120th Street, Stonegate Drive to Roanoke Boulevard - Omaha, Nebraska

230th and Capehart Road Improvements - Sarpy County, Nebraska

West Haymarket, Charleston Street Improvements - Lincoln, Nebraska

Sarpy County, 132nd Street & Giles Road Transportation Study - Sarpy County, Nebraska

16th Street Improvements, Monroe Avenue to Affiliated Foods Midwest - Norfolk, Nebraska

### EDUCATION

Associate Degree in Civil Engineering-Technology/Construction Technology, Iowa Western Community College

Bachelor of Science in Civil Engineering, University of Nebraska at Omaha

### LICENSURE

Professional Engineer:  
Nebraska, Iowa, Illinois

### PROFESSIONAL AFFILIATIONS

American Society of Civil Engineers

Lincoln - Omaha - Council Bluffs Association of Transportation Engineers

American Council of Engineering Companies

Omaha Engineers Club



## DARIN BROWN, P.E.

STRUCTURAL ENGINEER | SCHEMMER



Darin Brown, P.E., has more than 22 years of experience in the transportation industry with 11 years of project management experience with Schemmer, managing bridge projects on federal, state and local levels. He serves as Schemmer's Bridge Group Manager accountable for all bridge projects in Nebraska, Iowa and Oklahoma. Darin has been involved with the design of projects from concept development to preliminary and final design. His designs have encompassed the use of variable-depth steel plate girders, precast/prestressed concrete beams, drilled shaft foundations and innovative bridge rehabilitation.

### SELECTED PROJECT EXPERIENCE

City of Lincoln Airport Entrance Road - Lincoln, Nebraska

City of Lincoln MoPac Trail Pedestrian Bridge, Over 27th Street - Lincoln, Nebraska

City of Papillion Washington Street, Reconstruction - Papillion, Nebraska

City of Omaha 120th Street, Stonegate Drive to Roanoke Boulevard - Omaha, Nebraska

City of Omaha 84th and Grover Street Bridge - Omaha, Nebraska

16th Street Improvements, Monroe Avenue to Affiliated Foods Midwest - Norfolk, Nebraska

N-35 Norfolk Northeast - Norfolk, Nebraska

### EDUCATION

Bachelor of Science in Civil Engineering-Structures,  
University of Arizona

### LICENSURE

Professional Engineer:  
Nebraska, Iowa, Oklahoma

ATSSA Traffic Control  
Supervisor

American Concrete Institute

### ACCREDITATIONS / CERTIFICATIONS

National Bridge Inspection  
Standards-Certified Program  
Manager

Certified Bridge Inspector

### PROFESSIONAL AFFILIATIONS

Nebraska Society of  
Professional Engineers



## JOE BINGE, P.E.

ELECTRICAL ENGINEER | SCHEMMER



Joe Binge has 16 years of experience as an electrical engineer. He has worked on a wide range of projects throughout the Midwest. He is proficient in AutoCAD, Microsoft Office, Visual Lighting Design, ComCheck, Revit and SKM PowerTools.

### SELECTED PROJECT EXPERIENCE

City of Lincoln West O Street Streetscape - Lincoln, Nebraska

City of Lincoln Airport Entrance Road - Lincoln, Nebraska

City of Papillion Washington Street, Reconstruction - Papillion, Nebraska

Metro Crossing Site Development - Council Bluffs, Iowa

North Central States Regional Council of Carpenters Papillion Training Center - Papillion, Nebraska

126th and Giles Papillion Warehouse - Papillion, Nebraska

City of Omaha Northeast Street Maintenance Facility - Omaha, Nebraska

### EDUCATION

Bachelor of Science in  
Electrical Engineering,  
University of Nebraska at  
Lincoln

### LICENSURE

Professional Engineer:  
Nebraska, Virginia, Missouri,  
Iowa, Oklahoma, Kansas, South  
Dakota

### PROFESSIONAL AFFILIATIONS

International Association of  
Electrical Inspectors



## JASON TEEL

PROJECT REPRESENTATIVE - CIVIL | SCHEMMER



Jason began his career at NDOR and became one of their most valued and experienced construction inspectors. With over 10 years of experience in construction phase services, inspection of transportation construction and the traffic control industries Jason is a critical member of our construction administration team. He is a qualified inspector who stays current with public safety and construction standards. He is effective in communicating with contractors as well as scheduling teams and supervising projects. Jason serves as the lead inspector on large utility and paving projects. His understanding of engineering designs and the construction process results in highly detailed and thorough inspections. His project experience includes construction inspection, materials testing, and erosion control inspections on numerous roadway, bridge, and utility projects. Additional qualifications include knowledge of CAD, blueprint reading, Site Manager, Microstation, and is ATTSA traffic control certified.

### EDUCATION

Studied Industrial Technology,  
Peru State College

### ACCREDITATIONS / CERTIFICATIONS

NDOR Erosion and  
Sediment Control Inspector  
NDOR Asphalt Field  
Technician Level I & II  
NDOR Earthwork Technician  
NDOR Concrete Field Inspector  
Level I

Nuclear Gauge Training  
Certification

HASMAT Training Certificate

American Concrete Institute  
Field Technician Level I

### SELECTED PROJECT EXPERIENCE

City of Lincoln West O Street Streetscape - Lincoln, Nebraska

City of Papillion Washington Street, Reconstruction - Papillion, Nebraska

City of Lincoln Pavement and Joint Repairs - Lincoln, Nebraska

Iowa DOT Logan/Afton ADA Curb Ramp Construction Engineering - Ames, Iowa

City of Omaha 66th and Maple Intersection - Omaha, Nebraska

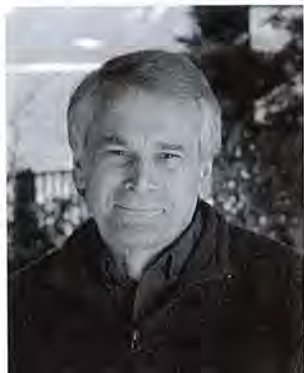
County Road P35A (Cargill Road) Removal and Replacement - Washington County,  
Nebraska

126th and Giles Papillion Warehouse - Papillion, Nebraska



## GORDON SHAW, PE, AICP

PRINCIPAL | LSC TRANSPORTATION CONSULTANTS



Gordon Shaw is a Principal of LSC Transportation Consultants, Inc. and generally serves as the Project Manager for studies conducted out of the Tahoe City, California office.

Mr. Shaw joined the firm in 1983 and has experience conducting traffic and transportation studies throughout the western United States. He has conducted over 300 transportation studies for both public and private clients, including traffic engineering studies, traffic model and simulation analyses, transit planning studies, parking analyses, transit facility designs, and bicycle/pedestrian studies.

Mr. Shaw holds an Engineer's Degree in Civil Engineering from Stanford University, a M.S. in Infrastructure Planning from Stanford University, and a B.S. in Civil Engineering from Purdue University.

### EDUCATION

Engineer's Degree in Civil Engineering – Stanford University

Master of Science in Infrastructure Planning – Stanford University

Bachelor of Science in Civil Engineering – Purdue University

### LICENSURE

Registered Professional Engineer in California, Colorado, Nevada, and Utah

### PROFESSIONAL AFFILIATION

American Institute of Certified Planners (AICP)

Institute of Transportation Engineers (ITE)

American Planning Association (APA)

### PROJECT EXPERIENCE

In his capacity as Principal with the firm, his duties run the gamut from large-scale urban transit and transportation planning to site-specific preliminary engineering design and traffic analysis. A strong focus of his work history is for resort areas developing transportation plans for environmentally sensitive areas that can efficiently accommodate large variations in travel demands. Mr. Shaw also conducted transportation modeling efforts for roadway design studies associated with numerous large developments in California, Nevada, and Colorado.

Fixed-route transit system studies have formed the focus of Mr. Shaw's transit experience with the firm. He has served as Project Manager for over 60 transit studies throughout the American West, with a focus on rural and small urban transit systems. He has specialized in the planning of transit service for mountain resort communities directing studies in Durango, Steamboat Springs and Summit County, Colorado; South Lake Tahoe, California and Jackson, Wyoming. He developed plans for transit systems providing service to the elderly and disabled of Weld County, El Paso, and Pueblo Counties in Colorado as well as conducted a statewide transit needs assessment for the Arkansas Governor's Office. He conducted transit-planning workshops in California, Arizona, New Mexico, and Colorado. In addition, Mr. Shaw developed a number of transit maintenance, inter-modal, and bus rapid transit facility plans.

Parking has constituted another element of Mr. Shaw's work history including work for downtown centers, hospitals, resort communities, and universities. In addition, he developed preliminary engineering and functional designs for municipalities and college campuses as well as for other private and public projects. Mr. Shaw served as Project Manager for a variety of pedestrian and bicycle studies in Colorado and California.



## KAREN FINK

PLANNER | LSC TRANSPORTATION CONSULTANTS



### EDUCATION

Master's Degree in City and Regional Planning and Transportation Engineering  
– University of California, Berkeley

Bachelor's Degree in Environmental Biology and Management, Water Quality Emphasis – University of California, Davis

Karen Fink is a Planner in the Tahoe City, California office. Since joining the firm, she has focused on transit planning, transit performance evaluation, and pedestrian trip generation.

Ms. Fink has extensive experience developing regional transportation and corridor plans, constructing and adapting modeling tools to forecast bicycle, pedestrian, and vehicle trips, and facilitating effective public outreach processes to accelerate implementation of bicycle, pedestrian, and transit projects.

She has also worked on environmental impact analysis, short- and long-range transit plans, transportation and land use policy development, and transportation monitoring protocols. She has managed numerous projects and contracts, and overseen departmental and project budgets.

### PROJECT EXPERIENCE

Ms. Fink has focused on multiple projects at LSC, including the Amador Intercity Transit Study, Humboldt County Association of Governments Transit Development Plan, and Park City's Bonanza Park Pedestrian Modeling.

In her previous role as a Principal Transportation Planner at the Tahoe Regional Planning Agency, Ms. Fink led the development of the Lake Tahoe Region's first joint Regional Transportation Plan/Sustainable Communities Strategy. She also oversaw the updates of the Lake Tahoe Bicycle and Pedestrian Plan (now the Active Transportation Plan), and served on technical advisory committees for the Lake Tahoe Unified School District Safe Routes to School Master Plan, and the Nevada Stateline to Stateline Bikeway Feasibility Study. While at TRPA, she worked closely with LSC to develop a bicycle and pedestrian trip forecasting model responsive to local conditions. Ms. Fink was a key facilitator of the Lake Tahoe Bikeway Partnership, a multi-jurisdictional workgroup that generated millions of dollars in funding for bicycle paths.

Ms. Fink is skilled in project management, group facilitation, public outreach, environmental analysis, and transportation performance evaluation. She enjoys working with diverse stakeholder groups to generate buy-in and interest in transportation plans and projects.



## BILL SUEN, EIT

ENGINEER | LSC TRANSPORTATION CONSULTANTS



### EDUCATION

Bachelor of Science –  
Mechanical Engineering  
California Polytechnic State  
University, San Luis Obispo

### LICENSURE

Certified Engineer in Training

### PROFESSIONAL AFFILIATION

Institute of Transportation  
Engineers

Bill Suen is a Transportation Engineer in the Tahoe City, California office. Since joining the firm in 2006, Mr. Suen has worked on a variety of public and private traffic engineering projects.

These studies include the evaluation of existing traffic operations analysis, level of service analysis, trip generation estimates, accident data evaluations, parking studies, traffic calming measures, and signal warrants.

### PROJECT EXPERIENCE

Mr. Suen has worked on traffic impact studies in Douglas County, Nevada, and Calaveras County, El Dorado County, Nevada County, and Placer County, California as well as in Colorado. These analyses included the evaluation of existing traffic operations, level of service, intersection mitigation measures, and parking demand.

Mr. Suen is skilled in the employment of various traffic analysis software such as Traffix, Highplan, SIDRA, and Synchro/Sim Traffic.

Mr. Suen's previous experience included four years as a mechanical engineer. As a laser applications engineer in the biomedical industry, Mr. Suen laser cut nickel titanium alloy tubes, in the production to arterial stents. His responsibilities included cutting system development and support, production floor operations supervision, and new product development. He authored and presented technical memorandums on experimental laser cutting effects of nickel titanium alloy, and worked extensively with external clients and vendors.



## JAMES NATHAN HINES BA OXON, C.I.D, CLIA

PRINCIPAL | HINES



Nate Hines graduated from the University of Oxford receiving a first class designation for his senior thesis. While living in the UK, Nate managed a number of international projects in London, the Mediterranean, and the Middle East. Nate is nationally recognized for his work integrating sustainable solutions into the design process of large scale and unique projects by working closely with the planning team during the Design Development phase of a project. As Principal for the Company, Nate takes an active leadership role in the Urban Land Institute (Young Leader), the ASLA, and the Irrigation Association.

Principal responsibilities include working closely with project owner & design team to develop cost effective, conservation minded approaches to the wise stewardship of irrigation water resources. Additionally, Nate oversees the Hines engineering team during the concept and master plan development of key projects.

### EDUCATION

2004 - University of Oxford  
Oxford, UK, BA, Oxon

96-99 - Colorado State  
University, Fort Collins, CO

### PROFESSIONAL AFFILIATIONS

Certified Irrigation Designer  
(CID)

Irrigation Association, Certified  
Landscape Irrigation Auditor  
(CLIA)

American Society of  
Landscape Architects (ASLA)

Urban Land Institute, Young  
Leader (ULI)

### LICENSURE

2008 - Licensed Texas Irrigator

2006 - Certified Irrigation  
Designer—Commercial

### SELECTED PROJECT EXPERIENCE

Regional/Site Water Resource Planning

Master Planning for Large Residential and Commercial Development

Alternative Water Source Analysis & Development

Managing Public/Private Relationships

Water capture, storage, treatment, & reuse feasibility study

Field experience – water analysis and collection, water quality research, surveying

Proficient in AutoCAD 2006



## EDWARD W. PRICE, E.I., C.I.D., CLIA

PROJECT ENGINEER/MANAGER | HINES



### EDUCATION

2001 - Bachelor of Science,  
Agricultural Engineering,  
Colorado State University

1997 - Associates Degree,  
General Engineering, Manatee  
Community College

### PROFESSIONAL AFFILIATIONS

Certified Irrigation Designer  
(CID)

Irrigation Association, Certified  
Landscape Irrigation Auditor  
(CLIA)

### LICENSURE

2006 - Certified Irrigation  
Designer Certificate

Mr. Price brings a Civil Engineering education with an emphasis in Agriculture to his practice of pump station, water feature mechanical, water quality, and irrigation system design and construction management. He has applied his engineering background to the green industry so as to maximize system efficiency and operational performance. As an engineer, Mr Price integrates easily into a project Engineering Team providing valuable water use & system infrastructure design concepts which impacts a wide range of site resources and systems. He has extensive water management expertise and a keen interest in the intelligent use of water resources. Ed's design experience encompasses project work in the Rocky Mountain Region and the Desert South West.

Responsibilities as a Project Engineer/Manager include planning for the irrigation water use of large developments and the implementation of that plan in pump station, distribution system and irrigation system design. With a background in construction Mr. Price excels in designs that include system renovations and retrofitting of new equipment. His extensive experience in pump station and controls design has made him our lead water feature and spray park engineer. Ed has managed the design of many large municipal projects such as high schools and city parks; these larger projects have included large irrigation pump station and water feature mechanical engineering. The Agricultural Engineering skills gained at Colorado State University have given Ed the background to specify new irrigation technologies and provide sound engineered results.

### SELECTED PROJECT EXPERIENCE

Water Use Planning

Master Planning for Large Residential and Commercial Development

Municipal Park and High School Irrigation Design

Pump Station and Distribution System Design

Water Feature and Spray Park Mechanical Design

Field experience –water analysis and collection, water quality research, surveying

Proficient with AutoCAD 2000 and AutoCAD 2006,



## NANCY CLANTON, PE, FIES, FIALD, LC

PRESIDENT | CLANTON & ASSOCIATES, INC



Nancy E. Clanton is founder and President of Clanton & Associates, a lighting design firm specializing in sustainable and regenerative lighting design. With over 35 years experience, Nancy is world renowned for her sustainable leadership including ground breaking projects such as Greening of the White House, Greening of the Pentagon, and Greening of the Grand Canyon. As a leader in lighting design technology, Nancy has developed lighting criteria for the Department of Defense, General Services Administration and The US State Department. She chairs and serves on key international and national technical committees. Nancy is an international keynote, master and plenary speaker for conferences such as GreenBuild, CleanTech Global, C40, LightFair, AIA, ASLA, and ALAN. She has earned the recognition of her peers with multiple international, national and state awards and fellow designations for lighting design, research and education leadership.

### EDUCATION

BS Architectural Engineering,  
University of Colorado, Boulder

### LICENSURE

Licensed Professional  
Engineer: Colorado, Oregon

### ACCREDITATIONS / CERTIFICATIONS

LEED Accredited Professional  
NCQLP Lighting Certified

### PROFESSIONAL AFFILIATIONS

Fellow Illuminating Engineering  
Society of North America

USGBC LEED Fellow

Fellow International  
Association of Lighting  
Designers

National Science Foundation  
committee member on  
assessing solid state lighting

ISO TC 205 WG7

IES Chair Outdoor  
Environmental, and Mesopic  
Committee

### SELECTED PROJECT EXPERIENCE

16th Street Mall Light Replacement, Denver, Colorado

Chautauqua Master Lighting Plan, Boulder, Colorado

Grand Canyon National Park General Management Plan, United States National Park  
Service

Vail Village, Vail, Colorado,

Pearl Street Pedestrian Mall, Boulder, Colorado

IES TM-12 "Spectral Effects at Mesopic Lighting Levels" (co-author)

IDA/IES Model Lighting Ordinance (MLO) (co-author)

IES RP-33-99 and IES RP-33-14 "Recommended Practice on Lighting for the Exterior  
Environment" (lead author)



## DAVID ROEDERER, LEED AP, IES

SENIOR DESIGNER, PROJECT MANAGER | CLANTON & ASSOCIATES, INC.



David began designing for Clanton and Associates, Inc. in 2005. His broad range of experience includes working for lighting design firms in New York, Memphis, and creating his own in Oxford, Mississippi. David migrated to architectural lighting from his beginnings as a theatrical lighting designer working off-Broadway in New York City. Before starting Oxford Lighting Consultants in 1995 he lit the University of Mississippi's television studio for educational, entertainment and sports programming. His diverse design background now brings imaginative dynamic lighting solutions for Clanton and Associates' projects such as the new Grand Avenue Bridge in Glenwood Springs, Colorado, currently under construction. His innovative electric and daylight integration for an office environment received the first LEED V3 Platinum rating when he designed the lighting for the USGBC Headquarters.

### EDUCATION

Bachelor of Fine Arts -  
Theatrical Lighting Design,  
University of Texas, Austin

### ACCREDITATIONS / CERTIFICATIONS

LEED Accredited Professional

### PROFESSIONAL AFFILIATIONS

Illuminating Engineering  
Society of North America

US Green Building Council

Designer's Lighting Forum

### SELECTED PROJECT EXPERIENCE

Tennyson Streetscape, Denver, Colorado

South Broadway Streetscape, Denver, Colorado

Downtown Alleys and Linden Street Improvements, Fort Collins, Colorado

I-70 "Bronco Bridge", Denver, Colorado

Downtown Pedestrian Mall Improvements, Aspen, Colorado (currently in design)

River North Promenade, Denver, Colorado (currently in design)

Uptown Houston Streetscape, Houston, Texas (currently in design)

The Park San Felipe on San Felipe, Houston, Texas

Chautauqua Master Lighting Plan, Boulder, Colorado

Boulder Creek Multiuse Path Guidelines, Boulder, Colorado







# WORK PROGRAM

Our work program is developed around the idea of establishing a fun and exciting process for everyone involved. This is an opportunity to create something truly great for City of La Vista along 84th Street and our team wants to help you get there!



## PROJECT UNDERSTANDING

**"THE 84TH STREET CORRIDOR WILL BE THE CENTRAL CITY CORE, WITH A MEMORABLE AND DISTINCT IDENTITY, A VIBRANT MIX OF LAND USES, A SENSE OF COMMUNITY AND A HIGH QUALITY OF LIFE FOR RESIDENTS."**

This statement, built from hard work and extensive community engagement by the City of La Vista, creates a mental image of 84th Street as a grand boulevard that ties together the exciting elements that are already in the process of populating either side of this valuable community asset. Civic Center Park, City Centre and the infill and redevelopment of the large commercial tracts of land along 84th Street need a strong spine to visually and physically tie everything together. This project, if done correctly, will provide a wonderful parkway setting that will become the face of La Vista for all who visit and live there. This future is not inevitable, it will take hard work and strategic thinking; but it is possible, and the work plan proposed here will get you there.

Our team understands the various issues associated with this project. The design of 84th Street must appropriately respond to a diverse and changing land use pattern, unique grading challenges, sustainable storm water management, existing specimen trees, varied traffic movements, pedestrian amenities and safety, existing and proposed park space, long views and community identification.

## OUR APPROACH

As our team has thought about this project, one thing has become readily apparent to us: this is much more than just a streetscape project, this is an urban design exercise focused on creating a framework for the future growth of the corridor. While the Vision 84th Document set forth the idea of this corridor growing into the heart of the community, this project will create the bones for that to be fully realized. Through a targeted community and stakeholder engagement process our team will help the city develop various alternatives for 84th Street that demonstrate different concepts and ideas for all aspects of the project; from what we spend money on to what the visual characteristics are.

As stated in our cover letter our approach to streetscape and corridor projects like this is multi-scalar. We will use this process to ensure that the design for 84th Street accomplishes multiple objectives and leaves a lasting legacy for the future generations of La Vista. We believe that this approach to street design differentiates projects and ensures positive community impacts. The two scales of thinking set up a consistency to the street while providing flexibility that allows the design to react to specific constraints or opportunities that may occur. The first scale will set up a unifying character for the entire district and will establish the overarching strategy

for solving issues of traffic conditions, sustainable stormwater management, robust urban forest creation, district lighting and wayfinding, and pedestrian comfort and safety. The second scale of thinking ensures a more granular approach to street design that acknowledges that one size does not fit all when it comes to place-making. Our team will study how 84th Street interacts with adjacent properties and land use in order to create an overlay of character zones that we will then use to develop specific approaches for important considerations such as access management, community gathering spaces, public art and detailed traffic functions like turning lanes and parking.

Another important facet of our approach is the utilization of performance metrics to establish project goals and strategies. This performance-based approach allows you, as clients, to weigh the pros and cons of different strategies based on quantifiable data. Our team will categorize the various aspects of the designed landscape in terms of impacts to community health, economic vitality, environmental performance and aesthetic concerns. These performance goals will directly inform the decisions that we make and will help the city justify the investment in this project.

To accomplish this, we have outlined the following work program.

## SCOPE OF WORK

### TASK 1 | EXISTING CONTEXT SURVEY + MAPPING

#### TASK 1.1 - TOPOGRAPHIC SURVEY

Our team will create an existing Topographic Survey per the specifications outlined in the RFP. This survey will be field verified by the design team prior to the commencement of any detailed design work. The survey will be provided to the City in electronic format as identified within the RFP. One aspect that could potentially save this project money would be to utilize any existing survey data that has been collected by City Centre Redevelopment LLC or any survey information created for the Civic Center Park. At the time of contract our team will evaluate what is available and adjust our fees if needed.

#### TASK 1.2 - BASE MAP CREATION

Our team will create a project Base Map that will include all survey information as well as a high resolution aerial image. This map will include the information outlined in the RFP. In addition to that outlined information our team will also collect future development plans and park plans and overlay those elements onto the base map to create an existing conditions and future conditions representation.



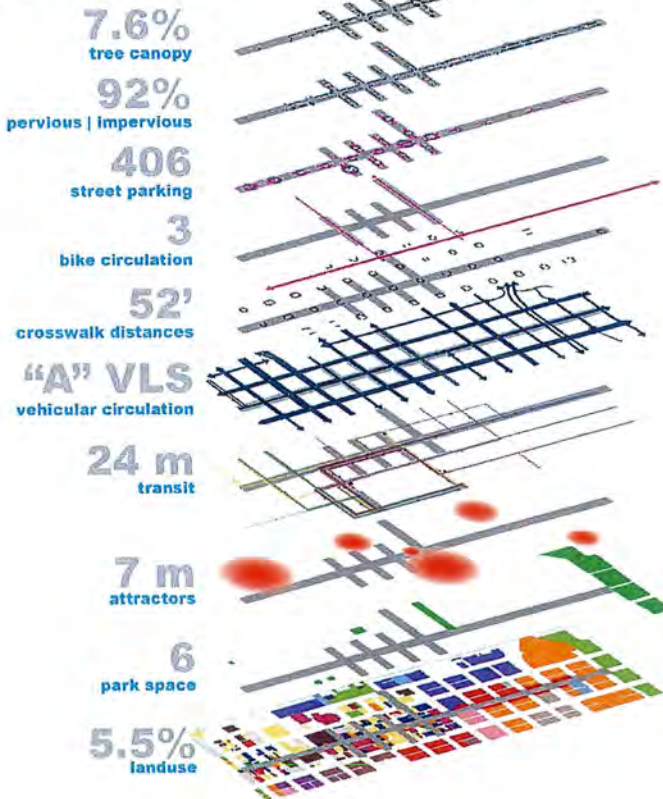
### TASK 1.3 - SITE ANALYSIS

After our team gathers existing data we will create a baseline report that describes the LOS (Level Of Services) for vehicles, pedestrians and cyclist. Additionally, we will create a more experientially-focused analysis which will outline things such as views and noise and how those impact overall place-making. This task will also be used to establish special circumstances that the design will need to react to such as connections to adjacent properties, parks, etc. This site analysis will also help our team establish performance goals to utilize later within the design process.

### TASK 1.4 - TRANSPORTATION INVENTORY AND ANALYSIS

Our team will create a LOS evaluation for the 84th Street Corridor that will be utilized to make decisions in regard to traffic changes, lane widths, bus stop locations, etc. While we understand the majority of this project is dealing with elements from back-of-curb to right of way we believe it is critical to understand and analyze the entire street right of way. This will be critical when looking at future mass transit accommodations and understanding how future development will impact the design of the street and traffic functions.

#### baselines



### TASK 1.5 - SUSTAINABILITY BASELINE/GOAL SETTING

We will analyze the existing site to create a series of baseline conditions for all aspects of the project such as water quality, pedestrian safety and comfort, maintenance cost and others. We will work with the City and community to then establish a series of performance goals that the design will be judged against. This process ensures that every decision we make builds upon the larger story and works toward agreed-upon goals. All of this information will be layered into a sustainability matrix that will be utilized to determine specific strategies, responsibilities and timelines.

#### Deliverables

- Existing Survey in AutoCAD Format, Base Map (Digital and Printed), Site Analysis Report, Sustainability Matrix

### TASK 2 | MEETINGS

Our team is led by a Robb Berg and Joshua Brooks who have a tremendous amount of experience in facilitating large complex projects for jurisdictions around the country. Our team is committed to providing clear and continuous communication throughout this process through regular face-to-face meetings and digital communication on a consistent basis throughout the duration of the project. We believe in, and practice, a collaborative design process wherein clients become part of the design team. Ultimately this process is more fun for everyone and leads to a better product. Our team believes that having a robust community engagement process will be important for this project. While we understand that there has already been an engagement process for the Vision 84th project; that was a number of years ago and focused more on land use and less on the design of 84th Street. We want to design what the community wants! As part of our strategic kick-off meeting we will develop a public engagement plan for presentation and comment by the project management team to ensure that we are moving forward appropriately.

#### TASK 2.1 - STRATEGIC KICK-OFF MEETING

Our team will facilitate a day long kick off meeting that is centered around introductions and solidifying the project schedule and process. Our team will also present our full public engagement and stakeholder involvement strategy for comment by the city team. We will then facilitate targeted sessions to discuss key topics such as pedestrian safety, traffic, water quality, aesthetics, transportation, etc. These individual discussions will then be synthesized into a series of draft project goals. Our team will work with the city project manager to plan a site tour that is both engaging and beneficial to everyone.



### TASK 2.2 - PUBLIC WORKSHOP #1

Our team has organized our community engagement strategy into #2 major public meetings. The first public meeting will be held after the site analysis and baseline measurement phase. Our team will use this meeting to gather data from the community and demonstrate key planning and design concepts. We will create a series of interactive exercises such as live polling presentations to gather feedback on what is most important to the community. This information will then be utilized in the creation of three (3) distinct alternatives.

*\*City is responsible for booking venue and providing refreshments as needed.*

### TASK 2.3 - CITIZEN ADVISORY GROUP MEETINGS (3)

Our team proposes to formalize a citizen advisory group which could consist of between 10 and 15 business owners, property owners and other key community representatives. This group would meet every other month and would be responsible for guiding the direction of the design process and the information that is taken to the larger public.

*\*City is responsible for booking venue and providing refreshments as needed.*

### TASK 2.4 - TECHNICAL ADVISORY GROUP MEETINGS (3)

Our team also proposes to develop a formalized technical advisory committee consisting of representatives from the various city departments and NDOR to meet every other month and review technical issues associated with the project.

*\*City is responsible for booking venue and providing refreshments as needed.*

### TASK 2.5 - PUBLIC WORKSHOP #2

The second public meeting that we propose is to review the conceptual plan alternatives. Our team would again utilize interactive exercises to weigh the various aspects of each plan to then inform a preferred alternative.

*\*City is responsible for booking venue and providing refreshments as needed.*

### TASK 2.6 - NDOR MEETINGS (2)

Our project team member Schemmer has strong working relationships with NDOR and will lead the coordination with this group. We have proposed to have a representative of NDOR in the Technical Advisory Group described above but we understand that there will need to be specific individual meetings to discuss larger issues.

### TASK 2.7 - DRAFT + FINAL PLAN REVIEWS (2)

Our team will provide document reviews at the 50% design and 90% design stages. We will prepare and deliver documents for review two weeks prior to each review meeting. Our team will then facilitate a review meeting in which we will cover each reviewing department. We will utilize Design Workshop Standards for quality control reviews that will help facilitate multi-department reviews in an efficient manner.

Additionally, prior to any deliverable being reviewed by the City our internal team will complete a rigorous internal review process that we have developed over five decades of designing and building complex landscape architecture projects. Our senior quality review specialist will review every discipline's drawings for correctness and consistency.

### TASK 2.8 - DIGITAL OUTREACH

Our team will provide graphic and written content to the City for inclusion on the city website. Additionally, we believe that there is an opportunity to utilize social



OUTDOOR DOWNTOWN DENVER MASTERPLAN | Denver, CO | Design Workshop



media and online tools as another way of gathering additional public input. Our team will work with the city to define what we believe to be the best use of project funds. This additional service would be covered within our base price and would be considered part of our community engagement process pending city approval.

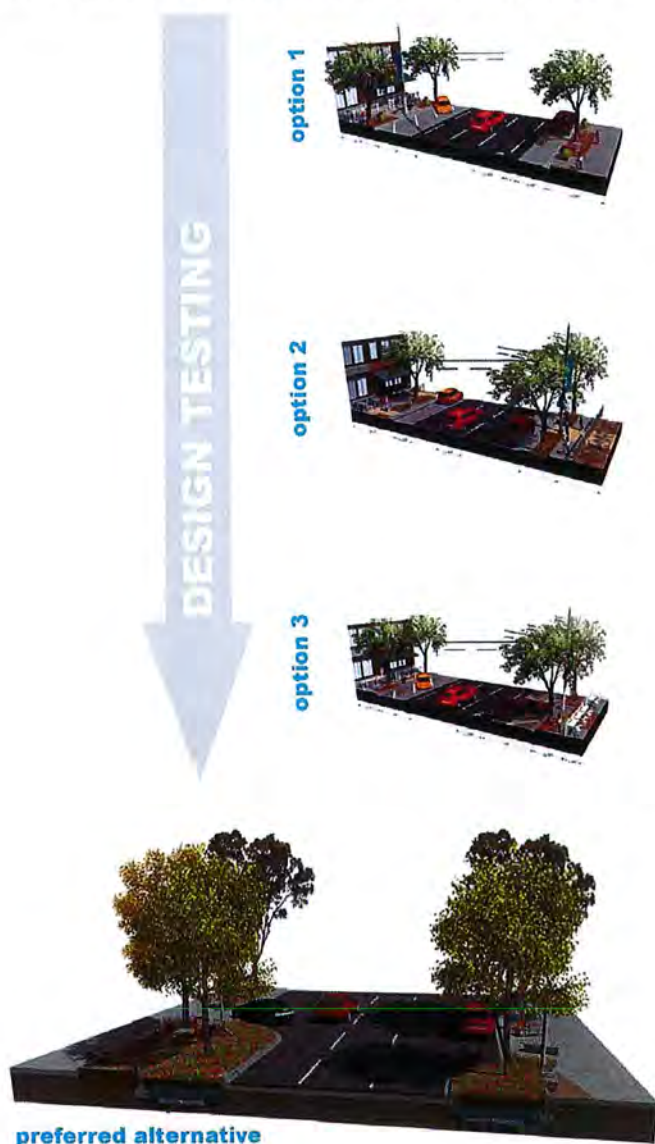
#### **Deliverables**

- Meeting Agendas and Minutes, Graphics for Presentations, Flyers and Website Material

### **TASK 3 | CONCEPTUAL ILLUSTRATIVE PLAN**

#### **TASK 3.1 - CONCEPTUAL PLAN ALTERNATIVES**

Based on the feedback from the first public meeting, various coordination meetings, and a detailed site analysis and project goal process, our team will develop three concept alternatives. We will utilize high quality plan renderings, sections, perspectives and diagrams to demonstrate the aesthetics and function of each option. Our team will evaluate and provide evidence for how each option either responds to or ignores project goals



that have been defined. We think that it is important for this process to explore different alternatives for different aspects of the project. To that end, we believe that each alternative must differ in fundamental decisions in order to accurately gauge the desires of the community and the feasibility of various ideas.

#### **TASK 3.2 - OPINION OF PROBABLE COST**

Our team will prepare a high level Opinion of Probable Cost (OPC) for each alternative. The OPCs will be vetted through recent construction and bid numbers from projects throughout the Midwest.

#### **TASK 3.3 - DEVELOP URBAN DESIGN KIT OF PARTS**

During this Conceptual Plan creation, our team will develop a kit of parts for all aspects of the project including hardscape, landscape, street trees, street furniture, public art, lighting, signage and documentation. This kit of parts can be used to evaluate each design alternative and will be overlaid onto a character zone map to determine where consistency happens and where individual moments might occur.

#### **Deliverables**

- Three (3) Concept Alternatives, Illustrative Plans, Sections, Perspectives and Diagrams as needed to depict design. Printed and Digital Copies, Sketch Up Model of Design with Surrounding Context, Urban Design Kit of Parts Book (8.5"by 11"). Three (3) Opinion of Probable Cost

### **TASK 4 | SELECTION OF PREFERRED STREETSCAPE PLAN**

#### **TASK 4.1 - SCHEMATIC DESIGN PLANS**

Based on the public input from the second public meeting our team will create a detailed schematic design plan which will utilize detailed illustrative plans, sections, perspectives and details to demonstrate all aspects of the project. These plans will include overall streetscape design and the design of unique project conditions such as the bridge and underpass condition at Civic Center Park and any pocket park areas along the corridor. These drawings will be used for detailed coordination and will also include cut sheets and product data for various materials and products.

#### **TASK 4.2 - SCHEMATIC DESIGN OPINION OF PROBABLE COST**

Our team will prepare a highly level Opinion of Probable Cost that will be vetted through recent construction and bid numbers throughout the Midwest. This will be reviewed by a senior quality reviewer within Design Workshop to ensure that all elements are accounted for.

#### **Deliverables**

- Illustrative Plan, Sections, Perspectives and Diagrams as needed to depict design. Printed and Digital Copies, Sketch Up Model of Design with Surrounding Context, Opinion of Probable Cost



## **TASK 5 | FINAL DESIGN AND CONSTRUCTION PLANS**

### **TASK 5.1 - DESIGN DEVELOPMENT**

Our team will create a 50% construction plan set for review by the City and NDOR. Our team will have internal check points at 15% and 30% design prior to an external review of the documents. This quality management process will ensure a complete and correct set of drawings prior to review by the City. Our set will be formatted based on City and NDOR standards. As part of the design development task we will prepare outline specifications for review.

### **TASK 5.2 - CONSTRUCTION DOCUMENTS**

Our team will produce a 90% review set prior to submitting final documents. This 90% set would represent the set that is reviewed by the City Engineer. After this final review we will produce 100% Construction Documents ready for bid. This package will include

- General Information Series
- Site Protection and Tree Removal Plan Series
- Grading, Erosion, and Sediment Control Plan Series
- Demolition Plan Series
- Grading Plan Series
- Civil/Roadway Improvements Plan Series
- Utility Series
- Water Quality Plan Series
- Roadway Detail Series
- Site Materials Plan Series
- Site Layout Plan Series
- Landscape Grading Series
- Reference Sections Series
- Site Details Series
- Tree Planting Plan Series
- Shrub and Ground Cover Plan Series
- Soil Preparation Plan Series
- Landscape Detail Series
- Lighting Plan Series
- Electrical Plan Series
- Lighting and Electrical Details
- Irrigation Plan Series
- Irrigation Details
- Signage and Environmental Graphics Plan Series
- Signage and Environmental Graphic Design Details

### **TASK 5.3 - CSI SPECIFICATIONS**

Our team will prepare a full project manual in CSI format for all scope items listed above. At this time we understand the City to be responsible for Section 1 General Conditions but that can be negotiated as needed.

### **TASK 5.4 - BID TABULATIONS**

Our team will prepare a final quantity tabulation with associated estimated cost for use by the City in Bidding and Negotiation.

#### ***Deliverables***

- 50% Construction Documents (100% Design Development) Review Set, 90% Construction Document Review Set, Project Manual, Bid Tabulations, Full packaged CAD drawings (plans + details), Three (3) Printed Plans Sets and Specs, Thirty (30) Printed Bid Packages, Opinion of Probable Cost

## **TASK 6 | ON-GOING CORRIDOR MANAGEMENT PLAN**

Task 6 can be removed from the Scope of Work if the City deems it unnecessary. However, based on previous experience we believe that this will be a valuable addition to the project and will provide a long-term guiding package to make future decisions about development within the corridor. This task is included within our base bid but can be removed if so desired.

### **TASK 6.1 - ACCESS MANAGEMENT PLAN/ URBAN DESIGN GUIDELINES**

We understand that a lot will be changing along this corridor and it will be critical to ensure that the design of 84th Street stays intact. Our team can prepare high level design guidelines for anticipated conditions that will happen along the corridor. This would include how buildings plug into the project and how property access is managed. This can be completed in conjunction with or after the construction document phase.

### **TASK 6.2 - OPERATIONS + MAINTENANCE PLAN**

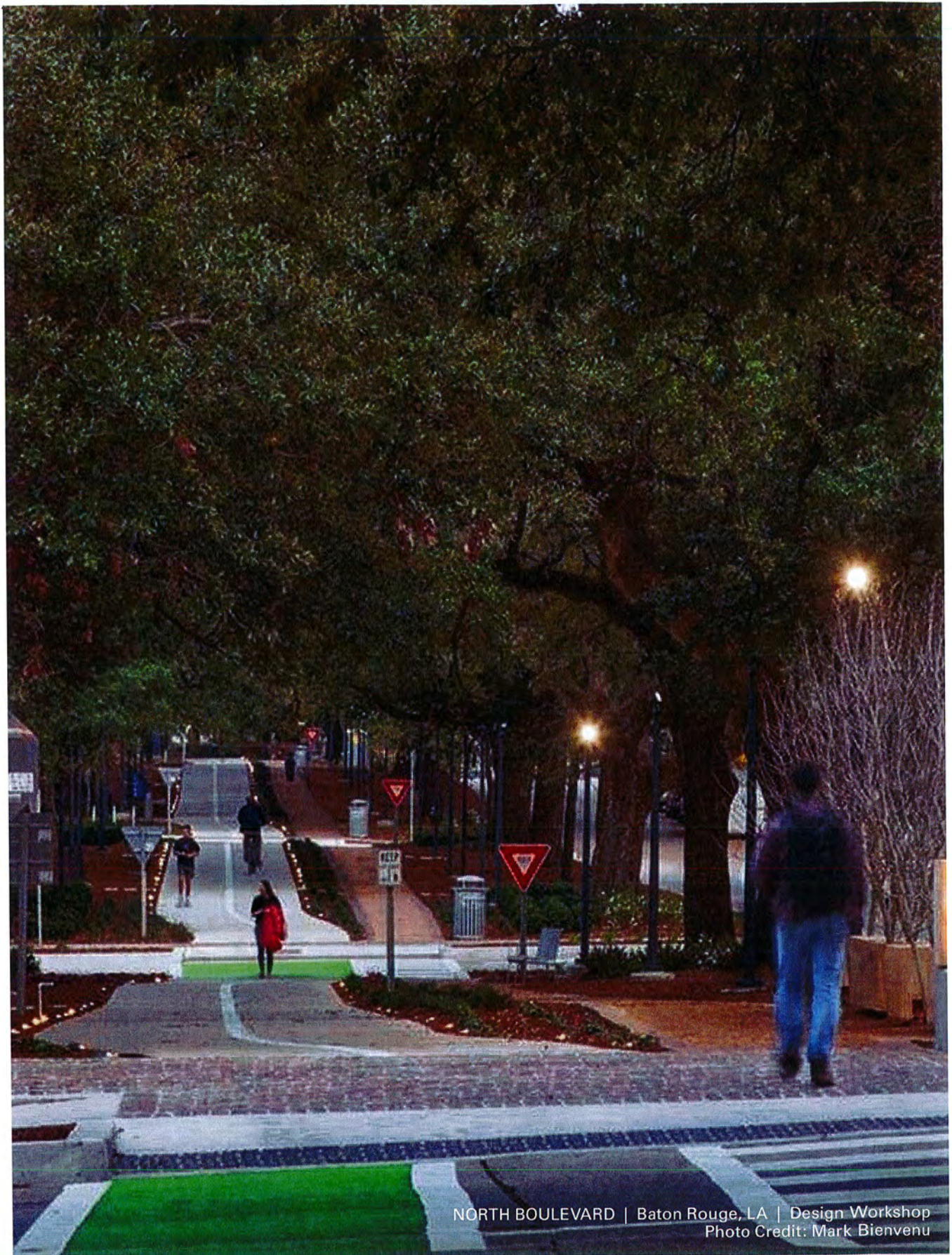
Our team will prepare a high-level maintenance and operations package that identifies best practices and process so that the level of commitment needed is used to inform the design. This task should happen in conjunction with the schematic design phase.

#### **DELIVERABLES**

- Corridor Management Plan Booklet (Color 11"x 17")

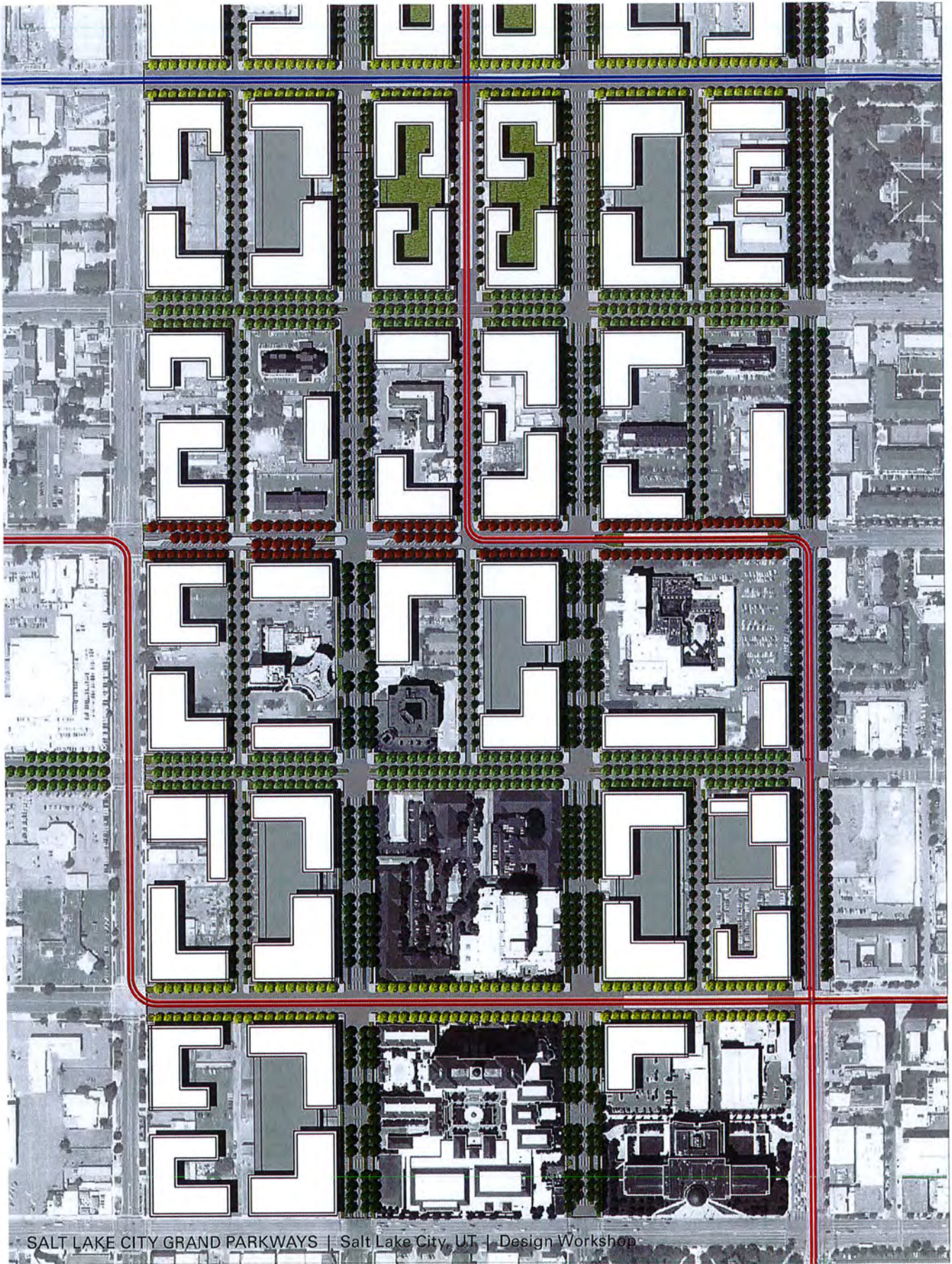
*\*Our team has the full capabilities to assist the city in a bidding a negotiation task as well as serve through the construction observation phase of work should that scope be needed.*





NORTH BOULEVARD | Baton Rouge, LA | Design Workshop  
Photo Credit: Mark Bienvenu







# SCHEDULE



# PROPOSED PROJECT SCHEDULE

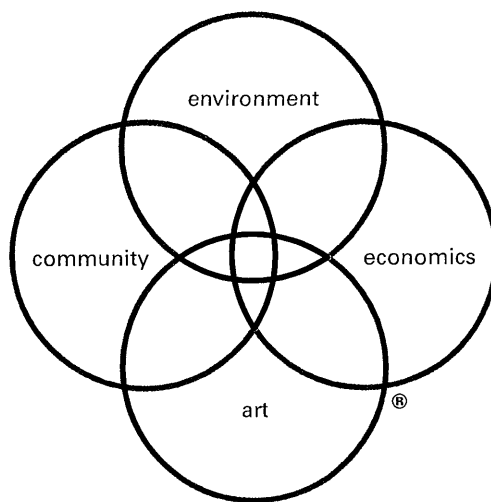
Design workshop will perform all services described in the scope of this proposal in accordance with the schedule below. Our proposed fee is also based on this schedule.

| MONTH<br>WEEK   | JUNE |   |   |   | JULY |   |   |   |   | AUGUST |    |    |    |    |    |
|---|------|---|---|---|------|---|---|---|---|--------|----|----|----|----|----|
|   | 1    | 2 | 3 | 4 | 5    | 6 | 7 | 8 | 9 | 10     | 11 | 12 | 13 | 14 | 15 |
| <b>TASK 1   EXISTING CONTEXT SURVEY + MAPPING</b>     |      |   |   |   |      |   |   |   |   |        |    |    |    |    |    |
| Topographic Survey                                    |      |   |   |   |      |   |   |   |   |        |    |    |    |    |    |
| Base Map Creation                                     |      |   |   |   |      |   |   |   |   |        |    |    |    |    |    |
| Inventory & Analysis                                  |      |   |   |   |      |   |   |   |   |        |    |    |    |    |    |
| Sustainability Baseline/Goal Setting                  |      |   |   |   |      |   |   |   |   |        |    |    |    |    |    |
| <b>TASK 2   MEETINGS</b>                              |      |   |   |   |      |   |   |   |   |        |    |    |    |    |    |
| Strategic Kick-Off Meeting                            |      |   |   |   |      |   |   |   |   |        |    |    |    |    |    |
| Public Workshops                                      |      |   |   |   |      |   |   |   |   |        |    |    |    |    |    |
| Advisory Group Meetings                               |      |   |   |   |      |   |   |   |   |        |    |    |    |    |    |
| NDOR Meetings   |      |   |   |   |      |   |   |   |   |        |    |    |    |    |    |
| Draft & Final Plan Reviews                            |      |   |   |   |      |   |   |   |   |        |    |    |    |    |    |
| Digital Outreach                                      |      |   |   |   |      |   |   |   |   |        |    |    |    |    |    |
| <b>TASK 3   CONCEPTUAL ILLUSTRATIVE PLANS</b>         |      |   |   |   |      |   |   |   |   |        |    |    |    |    |    |
| Conceptual Plan Alternatives                          |      |   |   |   |      |   |   |   |   |        |    |    |    |    |    |
| Opinions of Probable Costs                            |      |   |   |   |      |   |   |   |   |        |    |    |    |    |    |
| Develop Urban Design Kit of Parts                     |      |   |   |   |      |   |   |   |   |        |    |    |    |    |    |
| <b>TASK 4   PREFERRED STREETSCAPE PLAN</b>            |      |   |   |   |      |   |   |   |   |        |    |    |    |    |    |
| Schematic Design Plans                                |      |   |   |   |      |   |   |   |   |        |    |    |    |    |    |
| SD Opinion of Probable Costs                          |      |   |   |   |      |   |   |   |   |        |    |    |    |    |    |
| <b>TASK 5   FINAL DESIGN &amp; CONSTRUCTION PLANS</b> |      |   |   |   |      |   |   |   |   |        |    |    |    |    |    |
| Design Development                                    |      |   |   |   |      |   |   |   |   |        |    |    |    |    |    |
| Construction Documents                                |      |   |   |   |      |   |   |   |   |        |    |    |    |    |    |
| CSI Specifications                                    |      |   |   |   |      |   |   |   |   |        |    |    |    |    |    |
| Bid Tabulation  |      |   |   |   |      |   |   |   |   |        |    |    |    |    |    |
| <b>TASK 6   ON-GOING CORRIDOR MANAGEMENT</b>          |      |   |   |   |      |   |   |   |   |        |    |    |    |    |    |
| Access Mgmt Plan/Design Guidelines                    |      |   |   |   |      |   |   |   |   |        |    |    |    |    |    |
| Operations + Maintenance Plan                         |      |   |   |   |      |   |   |   |   |        |    |    |    |    |    |









## DW LEGACY DESIGN®

We believe that when environment, economics, art and community are combined in harmony with the dictates of the land and needs of society, magical places result — sustainable places of timeless beauty, significant value and enduring quality, places that lift the spirit.

Design Workshop is dedicated to creating Legacy projects: for our clients, for society and for the well-being of our planet.

**DESIGNWORKSHOP**

DESIGNWORKSHOP