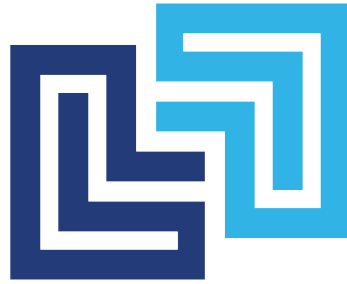


## **AGENDA ITEM 4B**

**Zoning Ordinance Amendments – CBD Stores -  
Section 2.20 – Definitions: S; Section 5.10 C-1  
Shopping Center Commercial**

# MEMO



**TO:** Planning Commission

**FROM:** Cale Brodersen, AICP, Associate City Planner

**DATE:** 10/12/2023

**RE:** Zoning Ordinance Amendments – CBD Stores - Section 2.20 –  
Definitions: S; Section 5.10 C-1 Shopping Center Commercial

---

In December of 2021, zoning text amendments were adopted into the La Vista Zoning Ordinance that established a definition for “smoke shop and tobacco store” and introduced the land use classification into the C-1 Shopping Center Commercial District as a permitted use with some use limitations. The limitations specified that the grouping of age-sensitive uses (smoke shops, tobacco stores, and liquor stores) shall be discouraged, and created a required buffer (cannot be within 1,000 feet of each other, measured from property line to property line, or within 300 feet of a school, childcare facility, or other place where children regularly gather or are present).

Recently, the owner of a wellness-oriented CBD boutique attempted to open a store in a shopping center within the C-1 zoning district. However, their proximity to a childcare center meant that they were not able to open as the sale of CBD products meant that they were classified as a “smoke shop”, and therefore subject to the buffer requirements. The intent of the 2021 zoning text amendments was not to restrict businesses such as this one that limit their sales to wellness-oriented products, so staff are recommending some clarifying changes. These proposed amendments adjust the definition of smoke shop and tobacco store to include “CBD store”, and also specify that CBD stores that are wellness-oriented and do not sell smokable products or paraphernalia shall not be subject to the buffer requirements.

**STAFF RECOMMENDATION:**

Staff recommends approval of the zoning text amendments to Sections 2.20 and 5.10 of the La Vista Zoning Ordinance.

# Zoning Text Amendments Red-lined Version



## **Section 2.20 - Definitions: S**

**SATELLITE DISH ANTENNA** shall mean a round, parabolic antenna incorporating a reflective surface that is solid, open mesh, or bar configured and is in the shape of a shallow dish, or cone and used to transmit and/or receive radio or electromagnetic waves.

**SCREENING** shall mean a structure *or* planting that conceals from view from public ways the area behind such structure or planting.

**SELF-SERVICE STORAGE FACILITY** shall mean a building or group of buildings containing individual, compartmentalized, and controlled access stalls or lockers for storage.

**SERVICE STATIONS** shall mean buildings and premises where the primary use is the supply and dispensing at retail of motor fuels, lubricants, batteries, tires, and motor vehicle accessories and where light maintenance activities such as engine tune-ups, lubrications, and washing may be conducted, but not including heavy maintenance and repair such as engine overhauls, painting, and body repair.

**SETBACK, FRONT YARD** shall mean the line which defines the depth of the required front yard. Said setback line shall be parallel with the right-of-way line *or other access way*. (***Ordinance No. 1083, 2-17-09***)

**SETBACK, REAR YARD OR SIDE YARD** shall mean the line which defines the width or depth of the required rear or side yard. Said setback line shall be parallel with the property line, *offset* by the perpendicular distance prescribed for the yard in the district. (***Ordinance No. 1083, 2-17-09***)

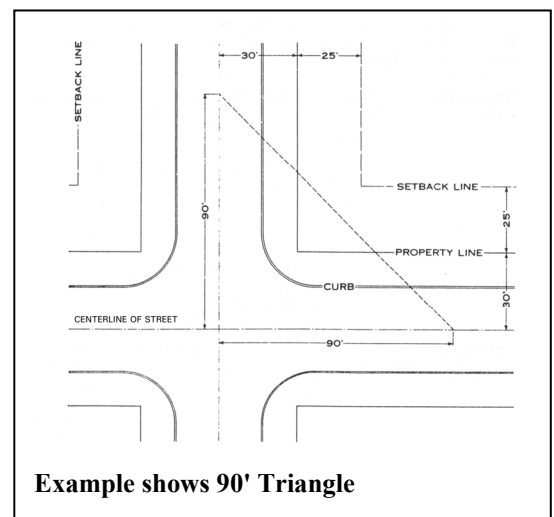
**SHOPPING CENTER** shall mean a group of commercial establishments planned, constructed, and managed as a total entity with customer and employee parking provided on-site, provisions for goods delivery that is separated from customer access, aesthetic considerations, and protection from the elements.

**SHOPPING CENTER, COMMERCIAL STRIP** shall mean a commercial development, usually one store deep, that fronts on a major street for a distance of one city block or more. Includes individual buildings on their own lots, with or without on-site parking and small linear shopping centers with shallow on-site parking in front of the stores.

**SHOPPING CENTER, OUTLET** shall mean a commercial development that consists mostly of manufacturers' outlet stores selling their own brands at a discounted price. This definition includes all forms of centers, such as strip style, enclosed mall style, and village clustered style centers.

**SIGHT TRIANGLE** is an area at a street intersection in which nothing shall be erected, placed, planted, or allowed to grow in such a manner as to materially impede vision between a height of two-and-a-half (2 ½) feet and ten (10) feet above the grades of the bottom of the curb of the intersecting streets, measured from the point of intersection of the centerline of the streets, sixty (60) feet in each direction along the centerline of the streets. At the intersection of major or *other* arterial streets, the sixty (60) foot distance shall be increased to ninety (90) feet for each arterial leg of the intersection. (***Ordinance No. 891, 2-04-03***)

**SIGN** shall mean and include any outdoor display, declaration, device, figure, drawing, illustration, message, placard, poster, billboard, insignia, or other things which are designed, intended, or used for direction, information, identification, or to advertise, to inform, or to promote any business, product activity, service, or any interest, except the following:



Signs less than fifty (50) square feet in area and less than twenty-five (25) feet in height of a public or quasi-public nature or other official notices that are authorized by the State of Nebraska, City of La Vista, or a Federal Government Agency, directional, informational, or other official signs or notices authorized by law.

**SIGN, ANIMATED** shall mean any sign that uses movement or change of lighting to depict action or create a special effect or scene.

**SIGN AREA** shall refer to that portion of a sign on which copy can be placed but not including the minimal supporting framework or bracing. The area of individually painted letter signs, individual letter signs or directly or indirectly illuminated individual letter signs, shall be calculated on the basis of the smallest geometric figure that will enclose the entire copy area of the sign. Any such calculation shall include the areas between the letters and lines, as well as the areas of any devices, illuminated or non-illuminated. (*Ordinance No. 1083, 2-17-09*)

**SIGN, AUDIBLE** shall mean any sign that conveys either a written message supported by an audible noise including music, spoken message, and / or sounds to attract attention to the sign. Audible signs also include signs conveying only the audible noise including music, spoken message, and / or sounds to attract attention.

**SIGN, BANNER** shall mean any sign of lightweight fabric or similar material that is permanently mounted to a pole or building by a permanent frame at one or more edges. National flags, state or municipal flags, or official flag of any institution or business shall not be considered banners. Banner signs shall not represent a commercial message.

**SIGN, BILLBOARD** shall mean a sign that identifies or communicates a commercial or noncommercial message related to an activity conducted, a service rendered, or a commodity sold at a location other than where the sign is located.

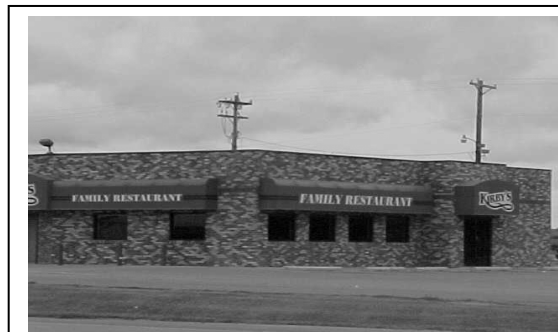


**Sign, Banner**

**SIGN, BLADE** shall mean a type of projecting sign that is perpendicular to the building, meant to gain visibility for large buildings, or to direct traffic within a pedestrian-oriented development.

**SIGN, BUILDING MARKER** shall mean any sign indicating the name of a building and date and incidental information about its construction, which sign is cut into a masonry surface or made of bronze or other permanent material.

**SIGN, CANOPY** shall mean any sign that is a part of or attached to an awning, canopy, or other fabric, plastic, or structural protective cover over a door, entrance, window, or outdoor service area. A marquee is not a canopy. (*Ordinance No. 1083, 2-17-09*)



**Sign, Canopy**

**SIGN, CENTER IDENTIFICATION** shall mean any sign erected to provide direction to a development including multiple uses and / or structures within the development. Center Identification signs shall include the name of said development and may include the names of major tenants of the development. Center Identification Signs shall typically be similar to Ground (Monument) signs. (*Ordinance No. 1083, 2-17-09*)

**SIGN, CONSTRUCTION** shall mean a temporary sign identifying an architect, engineer, contractor, subcontractor, and/or building material supplier who participates in construction on the property on which the sign is located. (*Ordinance No. 871, 10-15-02*); (*Ordinance No. 1083, 2-17-09*)

**SIGN, ELECTRONIC MESSAGE BOARD** shall mean *any sign capable of displaying words, symbols, figures, or images that can be electronically or mechanically changed by remote or automatic means. (Ordinance No. 1144, 5-17-11)*

**SIGN, FLASHING** shall mean a sign, which, by method or manner of illumination, flashes on or off, winks or blinks, shows motion, or creates the illusion of being on or off.

**SIGN, FREESTANDING** shall mean any sign supported by uprights or braces placed on or in the ground, which is used principally for advertising or identification purposes and is not supported by any building.

**SIGN, IDENTIFICATION** shall mean a sign giving the nature, logo, trademark, or other identifying symbol; address; or any combination of the name, symbol, and address of a building, business, development, or establishment on the premises where it is located.

**SIGN, ILLUMINATED** shall mean a sign illuminated in any manner by an artificial light source.

**SIGN, INCIDENTAL** shall mean a sign, generally informational, that has a purpose secondary to the use of the zone lot on which it is located, such as “no parking,” “entrance,” “loading only,” “telephone,” and other similar directives. No sign with a commercial message legible from a position off the zone lot on which the sign is located shall be considered incidental. Incidental signs may be attached or painted on the wall, *or they may be freestanding signs. (Ordinance No. 1083, 2-17-09)*

**SIGN, MARQUEE** shall mean a sign affixed to or made part of any permanent roof-like structure projecting beyond a building or extending along and projecting beyond the wall of the building, generally designed and constructed to provide protection from the weather.

**SIGN, MONUMENT** shall mean a sign mounted directly to the ground with a maximum height not to exceed ten (10) feet.

**SIGN, NAMEPLATE** shall mean a sign not exceeding two (2) square feet for each dwelling.

**SIGN, NONCONFORMING** shall mean any sign that does not conform to the requirements of this ordinance

**SIGN, OFF-PREMISES** shall mean a sign including the supporting sign structure which directs the attention of the general public to a business, service, or activity not usually conducted, or a product not offered or sold, upon the premises where such sign is located.

**SIGN, ON-PREMISE** shall mean a sign, display, or device-advertising activities conducted on the property on which such sign is located.

**SIGN, PENNANT** shall mean any lightweight plastic, fabric, or other material, whether or not containing a message of any kind, suspended from a rope, wire, or string, usually in series, designed to move in the wind.

**SIGN, POLE** shall mean a sign that is mounted on a freestanding pole or other support so that the bottom edge of the sign face is six (6) feet or more above grade.



**Sign, Monument  
Sign, Electronic Message  
Sign, Flashing**



**Sign, Monument**

**SIGN, PORTABLE** shall mean a sign, usually of a temporary nature, not securely anchored to the ground or to a building or structure and which obtains some or all of its structural stability with respect to wind or other normally applied forces by means of its geometry or character. Examples are: menu and sandwich board signs, balloons used as signs, umbrellas used for advertising, and signs attached to or painted on vehicles parked and visible from the public right-of-way, unless said vehicle is used in the normal day-to-day operations (deliveries and transportation of personnel) of the business. This definition also includes any and all sandwich boards supported by human beings or animals.

**SIGN, PROJECT DIRECTORY** shall mean a sign fronting on a road containing only the name of the principal use and directional arrow to the principal use. Project directory signs are intended to direct attention to planned multi-tenant developments which are not easily accessible off of such roads and where on-premise signage for that development (or any tenants within the development) would not otherwise be visible by the motorists traveling on nearby arterial or collector roads at the closest point of access. (*Ordinance No. 1144, 5-17-11*)

**SIGN, PROJECTING** shall mean a projecting sign attached to a building in such a manner that its leading edge extends more than eight (8) inches beyond the surface of such building or wall.

**SIGN, REAL ESTATE** shall mean a temporary sign that identifies property or properties that are for sale or lease.

**SIGN, ROOF** shall mean a sign identifying the name of a business, enterprise, district, or development, and erected on or over the roof of a building. (*Ordinance No. 1083, 2-17-09*)

**SIGN SETBACK** shall mean the horizontal distance from the property line to the nearest projection of the existing or proposed sign.

**SIGN, SUBDIVISION** shall mean a sign erected on a subdivision which identifies the platted subdivision where the sign is located.

**SIGN SURFACE** shall mean the entire area of a sign.

**SIGN, SUSPENDED** shall mean a sign that is suspended from the underside of a horizontal plane surface and is supported by such surface.

**SIGN, TEMPORARY** shall mean a sign constructed of cloth, fabric, or other material with or without a structural frame intended for a limited period of display, including displays for holidays or public demonstrations. Temporary signs shall include portable signs as defined in this section.



**Sign, Projecting**

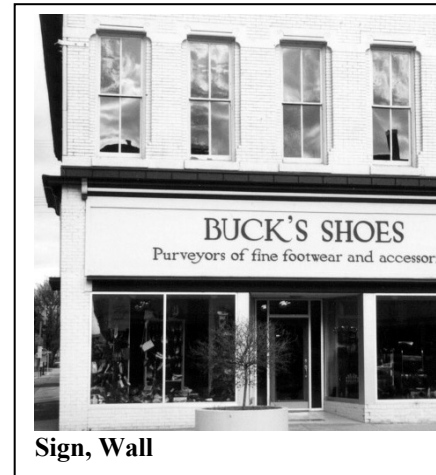


**Sign, Subdivision**

**SIGN, VIDEO** shall mean any on-premises or off-premises sign that conveys either a commercial or non-commercial message, including a business or organization name, through means of a television or other video screen. *This definition shall include electronic message board signs. (Ordinance No. 1083, 2-17-09)*

**SIGN, WALL** shall mean any sign attached parallel to, but within eight inches of, a wall, painted on the wall surface of, or erected and confined within the limits of an outside wall of any building or structure, which is supported by such wall or building, and which displays only one sign surface.

**SIGN, WINDOW** shall mean any sign, pictures, symbol, or combination thereof, designed to communicate information about an activity, business, commodity, event, sale, or service, that is placed inside a window or upon the window panes or glass and is visible from the exterior of the window.



**SIGN BASE** shall mean any decorative, functional element extending upward from grade to the start of the sign.

**SIMILAR USE** shall mean the use of land, buildings, or structures of like kind or general nature with other uses within a zoning district as related to bulk, intensity of use, traffic generation and congestion, function, public services requirements, aesthetics or other similarities.

**SITE PLAN** shall mean a plan, prepared to scale, showing accurately and with complete dimensioning, the boundaries of a site and the location of all buildings, structures, uses, drives, parking, drainage, landscape features, and other principal site development improvements for a specific parcel of land.

**SMOKE SHOP, ~~AND TOBACCO STORE~~, AND CBD STORE** each shall mean any premises dedicated to the display, sale, distribution, delivery, offering, furnishing, use or marketing of tobacco products, tobacco paraphernalia, electronic nicotine delivery systems, alternative nicotine products, or cannabidiol (CBD) products, or the sale, inhalation, ingestion, absorption, or other means of consumption or use of any such products, provided each such activity occurring on the premises is legally permissible under all applicable federal and State of Nebraska laws, rules, and regulations in existence on January 1, 2022; and provided, further, that any grocery store, supermarket, convenience store, or similar retail use that only sells conventional cigars, cigarettes, CBD products, or tobacco as an ancillary sale shall not be defined as a “smoke shop” ~~or~~, “tobacco store”, or “CBD store”. *(Ordinance No. 1433, 12-7-21)*

**SOCIAL CLUB OR FRATERNAL ORGANIZATIONS** shall mean an association of persons (whether or not incorporated), religious or otherwise, for a common purpose, but not including groups which are organized primarily to render a service carried on as a business for profit. *(Ordinance No. 1083, 2-17-09)*

**SOLAR ENERGY CONVERSION SYSTEM (SECS)** shall mean any device, such as a solar panel or solar collector or any combination thereof, which collects and converts solar energy to a form of usable energy. This includes both Building-Mounted Systems and Ground-Mounted System. *(Ordinance No. 1389, 3-3-2020)*

**SOLID WASTE** shall mean waste materials consisting of garbage, trash, refuse, rubble, sewage, offal, dead animals, or paunch manure.

**SPECIAL or VOCATIONAL TRAINING FACILITIES** shall mean a specialized instructional establishment that provides on-site training of business, commercial, and/or trade skills such as accounting, data processing, and computer repair. This classification excludes establishments providing training in an activity that is not otherwise permitted in the zone. Incidental instructional services in conjunction with another primary use shall not be included in this definition. *(Ordinance No. 1083, 2-17-09)*



**SPECIALTY FOOD STORE** shall mean a retail establishment that sells only specialized types or classes of staple foods and accessory foods including but not limited to bakeries, donut shops, ice cream stores, produce markets, meat markets, imported food stores, or boutique or health food grocery stores. *(Ordinance No. 1433, 12-7-21)*

**SPECIFIED ANATOMICAL AREAS** shall mean anatomical areas consisting of:  
Less than completely and opaquely covered human genitals, pubic region, buttock, anus, or female breast(s) below a point immediately above the top of the areola; and,  
Human male genitals in a discernibly turgid state, even if completely and opaquely covered.

**SPECIFIED SEXUAL ACTIVITIES** shall mean activities consisting of the following:  
Actual or simulated sexual intercourse, oral copulation, anal intercourse, oral-anal copulation, bestiality, direct physical stimulation of unclothed genitals, flagellation or torture in the context of a sexual relationship, or the use of excretory functions in the context of a sexual relationship, and any of the following sexually-oriented acts of conduct: Anilingus, buggery, coprophagy, coprophilia, cunnilingus, fellatio, necrophilia, pederasty, pedophilia, piquerism, sapphism, zooerasty; or  
Clearly depicted human genitals in the state of sexual stimulation, arousal, or tumescence; or  
Use of human or animal ejaculation, sodomy, oral copulation, coitus, or masturbation; or  
Fondling or touching of nude human genitals, pubic region, buttocks, or female breast(s); or  
Situation involving a person or persons, any of whom are nude, clad in undergarments or in sexually revealing costumes, and who are engaged in activities involving the flagellation, torture, fettering, binding, or other physical restraint or any such persons; or  
Erotic or lewd touching, fondling, or other sexually-oriented contact with an animal by a human being; or  
Human excretion, urination, menstruation, vaginal, or anal irrigation.

**STATE** shall mean the State of Nebraska.

**STORAGE** shall mean the keeping, in a roofed or unroofed area, of any goods, junk, material, merchandise, or vehicles on the same tract or premises for more than thirty (30) days.

**STORY** shall mean a space in a building between the surface of any floor and the surface of the floor above, or if there is not floor above, then the space between such floor and the ceiling or roof above.

**STREET** shall mean a public thoroughfare or right-of-way dedicated, deeded, or condemned for use as such, other than an alley, which affords the principal means of access to abutting property including avenue, place, way, drive, lane, boulevard, highway, road and any other thoroughfare except as excluded in this Regulation.

**STREET, ARTERIAL** shall mean a street designed with the primary function of efficient movement of through traffic between and around areas of a City, City, or county with controlled access to abutting property.

**STREET, COLLECTOR** shall mean a street or high way, which is intended to carry traffic from a minor street to major streets. Collector streets are usually the principal entrance streets to residential developments and the streets for circulation within the development.

**STREET FRONTAGE** shall mean the distance for which a lot line of a zone lot adjoins a public street, from one lot line intersecting said street to the furthest distant lot line intersecting the same street.

**STREET, LOCAL** shall mean a street designed for local traffic that provides direct access to abutting residential, commercial, or industrial properties.

**STREET, PRIVATE** shall mean an open, unoccupied space, other than a street or alley dedicated to the public, but permanently established as the principal means of vehicular access to abutting properties. *(Ordinance No. 1083, 2-17-09)*

**STREETSCAPE** shall mean the scene as may be observed along a street *right-of-way* composed of natural and man-made components, including buildings, paving, plantings, *poles, signs, benches, and other miscellaneous amenities.* *(Ordinance No. 1083, 2-17-09)*

**STRUCTURE** shall mean anything constructed or built, any edifice or building of any kind, or any piece of work artificially built up or composed of parts joined together in some definite manner, which requires location on the ground or is attached to something having a location on the ground, including swimming and wading pools and covered patios, excepting outdoor areas such as paved areas, walks, tennis courts, and similar recreation areas.

**STRUCTURE, TEMPORARY** shall mean a structure permitted as a temporary use. (***Ordinance No. 1083, 2-17-09***)

**STRUCTURAL ALTERATION** shall mean any change in the support members of a building, such as in a bearing wall, column, beam or girder, floor or ceiling joists, roof rafters, roof diaphragms, foundations, piles, or retaining walls or similar components.

**SUBDIVISION** shall mean the division of land, lot, tract, or parcel into two or more lots, parcels, plats, or sites, or other divisions of land for the purpose of sale, lease, offer, or development, whether immediate or future. (***Ordinance No. 1083, 2-17-09***)

## **Section 5.10 C-1 Shopping Center Commercial.**

**5.10.01 Intent:** *The purpose and intent of the City of La Vista in establishing the C-1 Shopping Center Commercial District is to provide convenient local retail shopping and service areas within the city for all residents and to provide for the development of new local commercial districts where so designated. This includes uses such as retail stores, banks, theaters, business offices, restaurants, and taverns. (Ordinance No. 1253, 6-15-15)*

This district prohibits all exterior storage by a primary use unless a separate Conditional Use Permit is requested for the use and granted by the City.

### **5.10.02 Permitted uses:**

- 5.10.02.01 *Medical/dental offices and business services including: attorneys, banks, insurance, real estate offices, postal stations, credit services, security brokers, dealers and exchange, title abstracting, finance services and investment services; but not including uses defined in Adult Establishment. (Ordinance No. 950, 3-1-05)*
- 5.10.02.02 *Child care center.*
- 5.10.02.03 *Dance studio, not including uses defined in Adult Establishment.*
- 5.10.02.04 *Meeting hall, not including uses defined in Adult Establishment.*
- 5.10.02.05 *Museum, art gallery.*
- 5.10.02.06 *Retail business or service establishment supplying commodities or performing services, such as, or in compatibility with and including the following:*
  - 1. *Apparel shop.*
  - 2. *Appliance store.*
  - 3. *Antique store.*
  - 4. *Automobile parts and supply store.*
  - 5. *Bakery shop (retail).*
  - 6. *Barber and Beauty shop.*
  - 7. *Bicycle shop.*
  - 8. *Book store, not including uses defined in Adult Establishment.*
  - 9. *Brew-on premises store.*
  - 10. *Camera store.*
  - 11. *Communication services.*
  - 12. *Computer store.*
  - 13. *Confectionery.*
  - 14. *Dairy products sales.*
  - 15. *Drug store.*
  - 16. *Dry cleaning and laundry pickup.*
  - 17. *Exercise, fitness and tanning spa, not including uses defined in Adult Establishment.*
  - 18. *Food Sales (Limited).*
  - 19. *Food Sales (General).*
  - 20. *Floral shop.*
  - 21. *Mortuary.*
  - 22. *Furniture store or showroom.*
  - 23. *Gift and curio shop.*
  - 24. *Gunsmith.*
  - 25. *Hardware store.*
  - 26. *Hobby, craft, toy store.*
  - 27. *Jewelry store.*
  - 28. *Liquor store in conformance with Section 5.10.07.*
  - 29. *Locksmith.*
  - 30. *Meat market, retail.*
  - 31. *Music retail store.*
  - 32. *Newsstands, not including uses defined in Adult Establishment.*
  - 33. *Paint store.*
  - 34. *Photographer.*

35. Picture framing shop.
36. Reservation center.
37. Restaurants: Sit-Down, Fast Casual, and Fast Food.
38. Second hand stores.
39. Shoe store.
40. Smoke shop ~~and~~, tobacco store, and CBD store in conformance with Section 5.10.07. (**Ordinance No. 1433, 12-7-21**)
41. Sporting goods.
42. Stamp and coin stores.
43. Tailors and dressmakers.
44. Tanning salon.
45. Travel agencies.
46. Video store, not including uses defined in Adult Establishment.
47. Social club and fraternal organizations, not including uses defined in Adult Establishment.
48. Telephone exchange.
49. Telephone answering service.
50. Public overhead and underground local distribution utilities.
51. *Publicly owned and operated facilities. (Ordinance No. 950, 3-1-05)*
52. *Adult Day Care Services (Ordinance No. 1328, 9-18-18)*
53. *Tutoring and Exam Preparation Services (Ordinance No. 1341, 2-5-19)*
54. *Personal Services, not including uses defined in Adult Entertainment Establishment. (Ordinance No. 1369, 10-1-19)*

#### **5.10.03 Permitted Conditional Uses:**

- 5.10.03.01 Recreational establishments.
- 5.10.03.02 Department Store.
- 5.10.03.03 Variety store, not including uses defined in Adult Establishment.
- 5.10.03.04 Amusement arcades.
- 5.10.03.05 Brew Pubs.
- 5.10.03.06 Coffee Kiosks.
- 5.10.03.07 Microbreweries when in conjunction with a restaurant.
- 5.10.03.08 Automated Teller Machines when not within the interior of a primary use.
- 5.10.03.09 Theater, indoor, not including uses defined in Adult Establishment.
- 5.10.03.10 Bowling center.
- 5.10.03.11 Business or trade school.
- 5.10.03.12 Commercial greenhouse.
- 5.10.03.13 Mail order services.
- 5.10.03.14 Pinball or video games business.
- 5.10.03.15 Tavern and cocktail lounge, not including uses defined in Adult Establishment.
- 5.10.03.16 Totally enclosed, automated and conveyor-style car washes.
- 5.10.03.17 Convenience store with limited fuel sales.
- 5.10.03.18 Garden supply and retail garden center.
- 5.10.03.19 Outdoor storage in conjunction with another primary use.
- 5.10.03.20 Pet Health Services, provided the following:
  1. Said use is totally enclosed within a building.
  2. Said services shall be provided for dogs, cats, birds, fish, and similar small animals customarily used as household pets.
  3. Typical uses include animal veterinary clinics with overnight boarding, only if medically necessary, not exceeding 48 hours.
  4. Grooming shall only be associated with medical appointment.
  5. This excludes uses for livestock and other large animals and uses for general grooming, dog bathing and clipping salons.
- 5.10.03.21 *Self-storage units, provided:*
  1. *Storage unit is an extension of an existing self-storage unit or facility.*

2. *The topography and access of the property will limit the development of identified commercial uses.*
3. *No outdoor storage.*
4. *Unit or facility provides perimeter fencing in accordance with this ordinance and a vegetative screen of at least six (6) feet in height and twenty (20) feet in width to any adjacent residential zoned property.*
5. *Lighting on site shall not be directed at or allowed to shine on any residential zoned property.*
6. *Applications for self-storage units under the terms of this Section shall be accompanied by evidence concerning the feasibility of the proposed request and its affect on surrounding property and shall include a site plan defining the areas to be developed with buildings and/or structures, the areas to be developed for parking, driveways and points of ingress and egress, the location and height of walls and fences, the location and type of landscaping, and the location, size and number of signs.*
7. *Such use shall not be located adjacent to the intersection of two or more arterial streets.*
8. *The property shall have at least one boundary line that is adjacent to other property that is zoned I-1 Light Industrial or I-2 Heavy Industrial.*
9. *Such use shall not include storage of explosives or hazardous materials and shall be in accordance with the intent, purpose and spirit of this ordinance and the Comprehensive Development Plan of La Vista, Nebraska.*

**(Ordinance No. 954, 7-5-05)**

5.10.03.22 *Event center, provided:*

1. *A conditional use permit would need to include specifics to the design and operation of the proposed center and individual activities, including, but not limited to, a detailed site plan and floor plan, a complete list of appointed or designated managers for each event at the center, and a complete description and duration of each event submitted to the city prior to each event.*
2. *Lighting on site shall not be directed at or allowed to shine on any residential zoned property.*
3. *Buildings utilized as event centers shall be accompanied by evidence concerning the feasibility of the proposed request and its affect on surrounding property and shall include a site plan defining the areas to be developed with buildings and/or structures, the areas to be developed for parking, driveways and points of ingress and egress, the location and height of walls and fences, the location and type of landscaping, and the location, size and number of signs.*
4. *All signage shall comply with the City's established regulations.*

**(Ordinance No. 955, 7-19-05)**

5.10.03.23 *Animal Specialty Services with or without overnight boarding of animals and outdoor exercise areas. (Ordinance No. 1253, 6-16-15)*

5.10.03.24 *Pet Shop. (Ordinance No. 1253, 6-16-15)*

**5.10.04 Permitted Accessory Uses:**

- 5.10.04.01 *Buildings and uses customarily incidental to the permitted uses.*
- 5.10.04.02 *Parking as allowed in Section 7.05 through 7.09.*
- 5.10.04.03 *Signs allowed in Section 7.01 through 7.04.*
- 5.10.04.04 *Landscaping as required by Section 7.17.*
- 5.10.04.05 *Solar Energy Conversion Systems as provided for in Section 7.15. (Ordinance No. 1389, 3-3-2020)*

**5.10.05 Permitted Temporary Uses**

*Temporary Uses require a permit from the City of La Vista and shall be valid only for a specific amount of time as indicated on said permit. All platted lots or tracts of land may have a maximum number of four (4) temporary uses per calendar year. Such uses shall not last more than two (2) weeks per use, except as provided for hereafter. (Ordinance No. 998, 7-18-06)*



- 5.10.05.01 Temporary greenhouses.
- 5.10.05.02 Temporary structures as needed for sidewalk and other outdoor sales events.
- 5.10.05.03 Fireworks stands, provided the criteria are met as established by the City through separate Ordinances.
- 5.10.05.04 Buildings and uses incidental to construction work *are permitted to remain until completion or abandonment of the construction work, at which time they shall be removed. (Ordinance No. 998, 7-18-06)*
- 5.10.05.05 Temporary structure for festivals or commercial events.

#### 5.10.06 Height and Lot Requirements:

- 5.10.06.01 The height and minimum lot requirements shall be as follows:

Uses	Lot Area (SF)	Lot Width	Front Yard	Side Yard	Rear Yard	Max. Height	Max. Lot Coverage
Permitted Uses	-	150'	25' <sup>1</sup>	10'	25'	45'	60%
Permitted Conditional Uses	-	150'	25' <sup>1</sup>	10'	25'	45'	60%

<sup>1</sup>. 25' front yard setback required only when no parking is present in the front yard. If parking is located in the front yard then front yard setback is a minimum of fifty (50) feet.

#### 5.10.07 Use Limitations:

- 5.10.07.01 When adjacent to residentially zoned land, no parking, drives or signs shall be allowed in any required yard within fifteen (15) feet of such district.
- 5.10.07.02 Furthermore, permanent screening shall be provided in this area in order to minimize impacts on residentially zoned property, as per Section 7.17.04.
- 5.10.07.03 Exterior lighting fixtures shall be shaded so that no direct light is cast upon any residential property and so that no glare is visible to any traffic on any public street.
- 5.10.07.04 Zoning and land use standards for smoke shops, tobacco stores, CBD stores, and liquor stores shall be as follows:
  - Except as provided in subsection 5.10.07.04.04 below, the grouping of age sensitive uses (such as smoke shops, tobacco stores, CBD stores and liquor stores) shall be discouraged, and such uses shall be compatible with surrounding uses.
  - Except as provided in subsection 5.10.07.04.04 below, smoke shops, tobacco stores, CBD stores, and liquor stores shall not be located within three hundred (300) feet, measured property line to property line, from a school (public or private), family day care home, child care facility, youth center, community center, recreational facility or any other facility where children regularly gather or are present, or any park, church, religious institution, hospital, or other similar facility or uses.
  - Except as provided in subsection 5.10.07.04.04 below, smoke shops, tobacco stores, CBD stores, and liquor stores shall not be located within one thousand (1,000) feet, measured from property line to property line, from another smoke shop, tobacco store, CBD store, or liquor store in the same zoning district.
  - Wellness-oriented CBD stores engaged in the retail sale of cannabidiol ("CBD") and hemp oil products such as oils, skin care products, and other nutritional or therapeutic CBD based products, and that do not sell products to be smoked or vaped, or accessories or paraphernalia connected with smoking or vaping (such as bongs, glass or water pipes, vaporizers or dab rigs), shall not be subject to the requirements of Sections 5.10.07.04.01 through 5.10.07.04.03.

# Zoning Text Amendments

## Clean Version

## **Section 2.20 - Definitions: S**

**SATELLITE DISH ANTENNA** shall mean a round, parabolic antenna incorporating a reflective surface that is solid, open mesh, or bar configured and is in the shape of a shallow dish, or cone and used to transmit and/or receive radio or electromagnetic waves.

**SCREENING** shall mean a structure *or* planting that conceals from view from public ways the area behind such structure or planting.

**SELF-SERVICE STORAGE FACILITY** shall mean a building or group of buildings containing individual, compartmentalized, and controlled access stalls or lockers for storage.

**SERVICE STATIONS** shall mean buildings and premises where the primary use is the supply and dispensing at retail of motor fuels, lubricants, batteries, tires, and motor vehicle accessories and where light maintenance activities such as engine tune-ups, lubrications, and washing may be conducted, but not including heavy maintenance and repair such as engine overhauls, painting, and body repair.

**SETBACK, FRONT YARD** shall mean the line which defines the depth of the required front yard. Said setback line shall be parallel with the right-of-way line *or other access way*. (*Ordinance No. 1083, 2-17-09*)

**SETBACK, REAR YARD OR SIDE YARD** shall mean the line which defines the width or depth of the required rear or side yard. Said setback line shall be parallel with the property line, *offset* by the perpendicular distance prescribed for the yard in the district. (*Ordinance No. 1083, 2-17-09*)

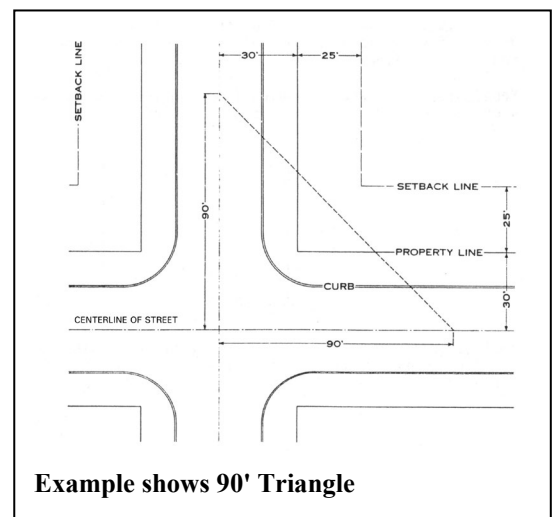
**SHOPPING CENTER** shall mean a group of commercial establishments planned, constructed, and managed as a total entity with customer and employee parking provided on-site, provisions for goods delivery that is separated from customer access, aesthetic considerations, and protection from the elements.

**SHOPPING CENTER, COMMERCIAL STRIP** shall mean a commercial development, usually one store deep, that fronts on a major street for a distance of one city block or more. Includes individual buildings on their own lots, with or without on-site parking and small linear shopping centers with shallow on-site parking in front of the stores.

**SHOPPING CENTER, OUTLET** shall mean a commercial development that consists mostly of manufacturers' outlet stores selling their own brands at a discounted price. This definition includes all forms of centers, such as strip style, enclosed mall style, and village clustered style centers.

**SIGHT TRIANGLE** is an area at a street intersection in which nothing shall be erected, placed, planted, or allowed to grow in such a manner as to materially impede vision between a height of two-and-a-half (2 ½) feet and ten (10) feet above the grades of the bottom of the curb of the intersecting streets, measured from the point of intersection of the centerline of the streets, sixty (60) feet in each direction along the centerline of the streets. At the intersection of major or *other* arterial streets, the sixty (60) foot distance shall be increased to ninety (90) feet for each arterial leg of the intersection. (*Ordinance No. 891, 2-04-03*)

**SIGN** shall mean and include any outdoor display, declaration, device, figure, drawing, illustration, message, placard, poster, billboard, insignia, or other things which are designed, intended, or used for direction, information, identification, or to advertise, to inform, or to promote any business, product activity, service, or any interest, except the following:



Signs less than fifty (50) square feet in area and less than twenty-five (25) feet in height of a public or quasi-public nature or other official notices that are authorized by the State of Nebraska, City of La Vista, or a Federal Government Agency, directional, informational, or other official signs or notices authorized by law.

**SIGN, ANIMATED** shall mean any sign that uses movement or change of lighting to depict action or create a special effect or scene.

**SIGN AREA** shall refer to that portion of a sign on which copy can be placed but not including the minimal supporting framework or bracing. The area of individually painted letter signs, individual letter signs or directly or indirectly illuminated individual letter signs, shall be calculated on the basis of the smallest geometric figure that will enclose the entire copy area of the sign. Any such calculation shall include the areas between the letters and lines, as well as the areas of any devices, illuminated or non-illuminated. (***Ordinance No. 1083, 2-17-09***)

**SIGN, AUDIBLE** shall mean any sign that conveys either a written message supported by an audible noise including music, spoken message, and / or sounds to attract attention to the sign. Audible signs also include signs conveying only the audible noise including music, spoken message, and / or sounds to attract attention.

**SIGN, BANNER** shall mean any sign of lightweight fabric or similar material that is permanently mounted to a pole or building by a permanent frame at one or more edges. National flags, state or municipal flags, or official flag of any institution or business shall not be considered banners. Banner signs shall not represent a commercial message.

**SIGN, BILLBOARD** shall mean a sign that identifies or communicates a commercial or noncommercial message related to an activity conducted, a service rendered, or a commodity sold at a location other than where the sign is located.

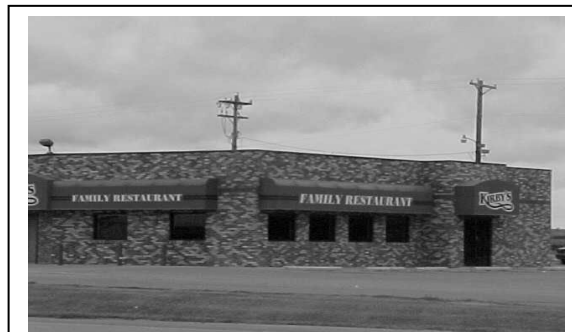


**Sign, Banner**

**SIGN, BLADE** shall mean a type of projecting sign that is perpendicular to the building, meant to gain visibility for large buildings, or to direct traffic within a pedestrian-oriented development.

**SIGN, BUILDING MARKER** shall mean any sign indicating the name of a building and date and incidental information about its construction, which sign is cut into a masonry surface or made of bronze or other permanent material.

**SIGN, CANOPY** shall mean any sign that is a part of or attached to an awning, canopy, or other fabric, plastic, or structural protective cover over a door, entrance, window, or outdoor service area. A marquee is not a canopy. (***Ordinance No. 1083, 2-17-09***)



**Sign, Canopy**

**SIGN, CENTER IDENTIFICATION** shall mean any sign erected to provide direction to a development including multiple uses and / or structures within the development. Center Identification signs shall include the name of said development and may include the names of major tenants of the development. Center Identification Signs shall typically be similar to Ground (Monument) signs. (***Ordinance No. 1083, 2-17-09***)

**SIGN, CONSTRUCTION** shall mean a temporary sign identifying an architect, engineer, contractor, subcontractor, and/or building material supplier who participates in construction on the property on which the sign is located. (***Ordinance No. 871, 10-15-02***); (***Ordinance No. 1083, 2-17-09***)

**SIGN, ELECTRONIC MESSAGE BOARD** shall mean *any sign capable of displaying words, symbols, figures, or images that can be electronically or mechanically changed by remote or automatic means. (Ordinance No. 1144, 5-17-11)*

**SIGN, FLASHING** shall mean a sign, which, by method or manner of illumination, flashes on or off, winks or blinks, shows motion, or creates the illusion of being on or off.

**SIGN, FREESTANDING** shall mean any sign supported by uprights or braces placed on or in the ground, which is used principally for advertising or identification purposes and is not supported by any building.

**SIGN, IDENTIFICATION** shall mean a sign giving the nature, logo, trademark, or other identifying symbol; address; or any combination of the name, symbol, and address of a building, business, development, or establishment on the premises where it is located.

**SIGN, ILLUMINATED** shall mean a sign illuminated in any manner by an artificial light source.

**SIGN, INCIDENTAL** shall mean a sign, generally informational, that has a purpose secondary to the use of the zone lot on which it is located, such as “no parking,” “entrance,” “loading only,” “telephone,” and other similar directives. No sign with a commercial message legible from a position off the zone lot on which the sign is located shall be considered incidental. Incidental signs may be attached or painted on the wall, *or they may be freestanding signs. (Ordinance No. 1083, 2-17-09)*

**SIGN, MARQUEE** shall mean a sign affixed to or made part of any permanent roof-like structure projecting beyond a building or extending along and projecting beyond the wall of the building, generally designed and constructed to provide protection from the weather.

**SIGN, MONUMENT** shall mean a sign mounted directly to the ground with a maximum height not to exceed ten (10) feet.

**SIGN, NAMEPLATE** shall mean a sign not exceeding two (2) square feet for each dwelling.

**SIGN, NONCONFORMING** shall mean any sign that does not conform to the requirements of this ordinance

**SIGN, OFF-PREMISES** shall mean a sign including the supporting sign structure which directs the attention of the general public to a business, service, or activity not usually conducted, or a product not offered or sold, upon the premises where such sign is located.

**SIGN, ON-PREMISE** shall mean a sign, display, or device-advertising activities conducted on the property on which such sign is located.

**SIGN, PENNANT** shall mean any lightweight plastic, fabric, or other material, whether or not containing a message of any kind, suspended from a rope, wire, or string, usually in series, designed to move in the wind.

**SIGN, POLE** shall mean a sign that is mounted on a freestanding pole or other support so that the bottom edge of the sign face is six (6) feet or more above grade.



**Sign, Monument  
Sign, Electronic Message  
Sign, Flashing**



**Sign, Monument**



**SIGN, PORTABLE** shall mean a sign, usually of a temporary nature, not securely anchored to the ground or to a building or structure and which obtains some or all of its structural stability with respect to wind or other normally applied forces by means of its geometry or character. Examples are: menu and sandwich board signs, balloons used as signs, umbrellas used for advertising, and signs attached to or painted on vehicles parked and visible from the public right-of-way, unless said vehicle is used in the normal day-to-day operations (deliveries and transportation of personnel) of the business. This definition also includes any and all sandwich boards supported by human beings or animals.

**SIGN, PROJECT DIRECTORY** shall mean a sign fronting on a road containing only the name of the principal use and directional arrow to the principal use. Project directory signs are intended to direct attention to planned multi-tenant developments which are not easily accessible off of such roads and where on-premise signage for that development (or any tenants within the development) would not otherwise be visible by the motorists traveling on nearby arterial or collector roads at the closest point of access. (*Ordinance No. 1144, 5-17-11*)

**SIGN, PROJECTING** shall mean a projecting sign attached to a building in such a manner that its leading edge extends more than eight (8) inches beyond the surface of such building or wall.

**SIGN, REAL ESTATE** shall mean a temporary sign that identifies property or properties that are for sale or lease.

**SIGN, ROOF** shall mean a sign identifying the name of a business, enterprise, district, or development, and erected on or over the roof of a building. (*Ordinance No. 1083, 2-17-09*)

**SIGN SETBACK** shall mean the horizontal distance from the property line to the nearest projection of the existing or proposed sign.

**SIGN, SUBDIVISION** shall mean a sign erected on a subdivision which identifies the platted subdivision where the sign is located.

**SIGN SURFACE** shall mean the entire area of a sign.

**SIGN, SUSPENDED** shall mean a sign that is suspended from the underside of a horizontal plane surface and is supported by such surface.

**SIGN, TEMPORARY** shall mean a sign constructed of cloth, fabric, or other material with or without a structural frame intended for a limited period of display, including displays for holidays or public demonstrations. Temporary signs shall include portable signs as defined in this section.



**Sign, Projecting**

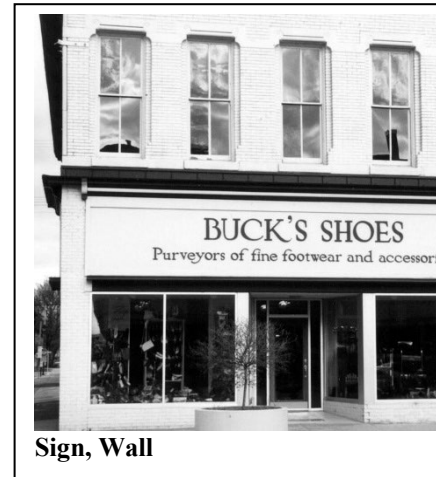


**Sign, Subdivision**

**SIGN, VIDEO** shall mean any on-premises or off-premises sign that conveys either a commercial or non-commercial message, including a business or organization name, through means of a television or other video screen. *This definition shall include electronic message board signs. (Ordinance No. 1083, 2-17-09)*

**SIGN, WALL** shall mean any sign attached parallel to, but within eight inches of, a wall, painted on the wall surface of, or erected and confined within the limits of an outside wall of any building or structure, which is supported by such wall or building, and which displays only one sign surface.

**SIGN, WINDOW** shall mean any sign, pictures, symbol, or combination thereof, designed to communicate information about an activity, business, commodity, event, sale, or service, that is placed inside a window or upon the window panes or glass and is visible from the exterior of the window.



**SIGN BASE** shall mean any decorative, functional element extending upward from grade to the start of the sign.

**SIMILAR USE** shall mean the use of land, buildings, or structures of like kind or general nature with other uses within a zoning district as related to bulk, intensity of use, traffic generation and congestion, function, public services requirements, aesthetics or other similarities.

**SITE PLAN** shall mean a plan, prepared to scale, showing accurately and with complete dimensioning, the boundaries of a site and the location of all buildings, structures, uses, drives, parking, drainage, landscape features, and other principal site development improvements for a specific parcel of land.

**SMOKE SHOP, TOBACCO STORE, AND CBD STORE** each shall mean any premises dedicated to the display, sale, distribution, delivery, offering, furnishing, use or marketing of tobacco products, tobacco paraphernalia, electronic nicotine delivery systems, alternative nicotine products, or cannabidiol (CBD) products, or the sale, inhalation, ingestion, absorption, or other means of consumption or use of any such products, provided each such activity occurring on the premises is legally permissible under all applicable federal and State of Nebraska laws, rules, and regulations in existence on January 1, 2022; and provided, further, that any grocery store, supermarket, convenience store, or similar retail use that only sells conventional cigars, cigarettes, CBD products, or tobacco as an ancillary sale shall not be defined as a “smoke shop”, “tobacco store”, or “CBD store”. *(Ordinance No. 1433, 12-7-21)*

**SOCIAL CLUB OR FRATERNAL ORGANIZATIONS** shall mean an association of persons (whether or not incorporated), religious or otherwise, for a common purpose, but not including groups which are organized primarily to render a service carried on as a business for profit. *(Ordinance No. 1083, 2-17-09)*

**SOLAR ENERGY CONVERSION SYSTEM (SECS)** shall mean any device, such as a solar panel or solar collector or any combination thereof, which collects and converts solar energy to a form of usable energy. This includes both Building-Mounted Systems and Ground-Mounted System. *(Ordinance No. 1389, 3-3-2020)*

**SOLID WASTE** shall mean waste materials consisting of garbage, trash, refuse, rubble, sewage, offal, dead animals, or paunch manure.

**SPECIAL or VOCATIONAL TRAINING FACILITIES** shall mean a specialized instructional establishment that provides on-site training of business, commercial, and/or trade skills such as accounting, data processing, and computer repair. This classification excludes establishments providing training in an activity that is not otherwise permitted in the zone. Incidental instructional services in conjunction with another primary use shall not be included in this definition. *(Ordinance No. 1083, 2-17-09)*

**SPECIALTY FOOD STORE** shall mean a retail establishment that sells only specialized types or classes of staple foods and accessory foods including but not limited to bakeries, donut shops, ice cream stores, produce markets, meat markets, imported food stores, or boutique or health food grocery stores. (*Ordinance No. 1433, 12-7-21*)

**SPECIFIED ANATOMICAL AREAS** shall mean anatomical areas consisting of:  
Less than completely and opaquely covered human genitals, pubic region, buttock, anus, or female breast(s) below a point immediately above the top of the areola; and,  
Human male genitals in a discernibly turgid state, even if completely and opaquely covered.

**SPECIFIED SEXUAL ACTIVITIES** shall mean activities consisting of the following:  
Actual or simulated sexual intercourse, oral copulation, anal intercourse, oral-anal copulation, bestiality, direct physical stimulation of unclothed genitals, flagellation or torture in the context of a sexual relationship, or the use of excretory functions in the context of a sexual relationship, and any of the following sexually-oriented acts of conduct: Anilingus, buggery, coprophagy, coprophilia, cunnilingus, fellatio, necrophilia, pederasty, pedophilia, piquerism, sapphism, zooerasty; or  
Clearly depicted human genitals in the state of sexual stimulation, arousal, or tumescence; or  
Use of human or animal ejaculation, sodomy, oral copulation, coitus, or masturbation; or  
Fondling or touching of nude human genitals, pubic region, buttocks, or female breast(s); or  
Situation involving a person or persons, any of whom are nude, clad in undergarments or in sexually revealing costumes, and who are engaged in activities involving the flagellation, torture, fettering, binding, or other physical restraint or any such persons; or  
Erotic or lewd touching, fondling, or other sexually-oriented contact with an animal by a human being; or  
Human excretion, urination, menstruation, vaginal, or anal irrigation.

**STATE** shall mean the State of Nebraska.

**STORAGE** shall mean the keeping, in a roofed or unroofed area, of any goods, junk, material, merchandise, or vehicles on the same tract or premises for more than thirty (30) days.

**STORY** shall mean a space in a building between the surface of any floor and the surface of the floor above, or if there is not floor above, then the space between such floor and the ceiling or roof above.

**STREET** shall mean a public thoroughfare or right-of-way dedicated, deeded, or condemned for use as such, other than an alley, which affords the principal means of access to abutting property including avenue, place, way, drive, lane, boulevard, highway, road and any other thoroughfare except as excluded in this Regulation.

**STREET, ARTERIAL** shall mean a street designed with the primary function of efficient movement of through traffic between and around areas of a City, City, or county with controlled access to abutting property.

**STREET, COLLECTOR** shall mean a street or high way, which is intended to carry traffic from a minor street to major streets. Collector streets are usually the principal entrance streets to residential developments and the streets for circulation within the development.

**STREET FRONTAGE** shall mean the distance for which a lot line of a zone lot adjoins a public street, from one lot line intersecting said street to the furthest distant lot line intersecting the same street.

**STREET, LOCAL** shall mean a street designed for local traffic that provides direct access to abutting residential, commercial, or industrial properties.

**STREET, PRIVATE** shall mean an open, unoccupied space, other than a street or alley dedicated to the public, but permanently established as the principal means of vehicular access to abutting properties. (*Ordinance No. 1083, 2-17-09*)

**STREETSCAPE** shall mean the scene as may be observed along a street *right-of-way* composed of natural and man-made components, including buildings, paving, plantings, *poles, signs, benches, and other miscellaneous amenities.* (*Ordinance No. 1083, 2-17-09*)

**STRUCTURE** shall mean anything constructed or built, any edifice or building of any kind, or any piece of work artificially built up or composed of parts joined together in some definite manner, which requires location on the ground or is attached to something having a location on the ground, including swimming and wading pools and covered patios, excepting outdoor areas such as paved areas, walks, tennis courts, and similar recreation areas.

**STRUCTURE, TEMPORARY** shall mean a structure permitted as a temporary use. (***Ordinance No. 1083, 2-17-09***)

**STRUCTURAL ALTERATION** shall mean any change in the support members of a building, such as in a bearing wall, column, beam or girder, floor or ceiling joists, roof rafters, roof diaphragms, foundations, piles, or retaining walls or similar components.

**SUBDIVISION** shall mean the division of land, lot, tract, or parcel into two or more lots, parcels, plats, or sites, or other divisions of land for the purpose of sale, lease, offer, or development, whether immediate or future. (***Ordinance No. 1083, 2-17-09***)

## **Section 5.10 C-1 Shopping Center Commercial.**

**5.10.01 Intent:** *The purpose and intent of the City of La Vista in establishing the C-1 Shopping Center Commercial District is to provide convenient local retail shopping and service areas within the city for all residents and to provide for the development of new local commercial districts where so designated. This includes uses such as retail stores, banks, theaters, business offices, restaurants, and taverns. (Ordinance No. 1253, 6-15-15)*

This district prohibits all exterior storage by a primary use unless a separate Conditional Use Permit is requested for the use and granted by the City.

### **5.10.02 Permitted uses:**

- 5.10.02.01 *Medical/dental offices and business services including: attorneys, banks, insurance, real estate offices, postal stations, credit services, security brokers, dealers and exchange, title abstracting, finance services and investment services; but not including uses defined in Adult Establishment. (Ordinance No. 950, 3-1-05)*
- 5.10.02.02 *Child care center.*
- 5.10.02.03 *Dance studio, not including uses defined in Adult Establishment.*
- 5.10.02.04 *Meeting hall, not including uses defined in Adult Establishment.*
- 5.10.02.05 *Museum, art gallery.*
- 5.10.02.06 *Retail business or service establishment supplying commodities or performing services, such as, or in compatibility with and including the following:*
  - 1. *Apparel shop.*
  - 2. *Appliance store.*
  - 3. *Antique store.*
  - 4. *Automobile parts and supply store.*
  - 5. *Bakery shop (retail).*
  - 6. *Barber and Beauty shop.*
  - 7. *Bicycle shop.*
  - 8. *Book store, not including uses defined in Adult Establishment.*
  - 9. *Brew-on premises store.*
  - 10. *Camera store.*
  - 11. *Communication services.*
  - 12. *Computer store.*
  - 13. *Confectionery.*
  - 14. *Dairy products sales.*
  - 15. *Drug store.*
  - 16. *Dry cleaning and laundry pickup.*
  - 17. *Exercise, fitness and tanning spa, not including uses defined in Adult Establishment.*
  - 18. *Food Sales (Limited).*
  - 19. *Food Sales (General).*
  - 20. *Floral shop.*
  - 21. *Mortuary.*
  - 22. *Furniture store or showroom.*
  - 23. *Gift and curio shop.*
  - 24. *Gunsmith.*
  - 25. *Hardware store.*
  - 26. *Hobby, craft, toy store.*
  - 27. *Jewelry store.*
  - 28. *Liquor store in conformance with Section 5.10.07.*
  - 29. *Locksmith.*
  - 30. *Meat market, retail.*
  - 31. *Music retail store.*
  - 32. *Newsstands, not including uses defined in Adult Establishment.*
  - 33. *Paint store.*
  - 34. *Photographer.*



35. Picture framing shop.
36. Reservation center.
37. Restaurants: Sit-Down, Fast Casual, and Fast Food.
38. Second hand stores.
39. Shoe store.
40. Smoke shop, tobacco store, and CBD store in conformance with Section 5.10.07. (**Ordinance No. 1433, 12-7-21**)
41. Sporting goods.
42. Stamp and coin stores.
43. Tailors and dressmakers.
44. Tanning salon.
45. Travel agencies.
46. Video store, not including uses defined in Adult Establishment.
47. Social club and fraternal organizations, not including uses defined in Adult Establishment.
48. Telephone exchange.
49. Telephone answering service.
50. Public overhead and underground local distribution utilities.
51. *Publicly owned and operated facilities. (Ordinance No. 950, 3-1-05)*
52. *Adult Day Care Services (Ordinance No. 1328, 9-18-18)*
53. *Tutoring and Exam Preparation Services (Ordinance No. 1341, 2-5-19)*
54. *Personal Services, not including uses defined in Adult Entertainment Establishment. (Ordinance No. 1369, 10-1-19)*

#### **5.10.03 Permitted Conditional Uses:**

- 5.10.03.01 Recreational establishments.
- 5.10.03.02 Department Store.
- 5.10.03.03 Variety store, not including uses defined in Adult Establishment.
- 5.10.03.04 Amusement arcades.
- 5.10.03.05 Brew Pubs.
- 5.10.03.06 Coffee Kiosks.
- 5.10.03.07 Microbreweries when in conjunction with a restaurant.
- 5.10.03.08 Automated Teller Machines when not within the interior of a primary use.
- 5.10.03.09 Theater, indoor, not including uses defined in Adult Establishment.
- 5.10.03.10 Bowling center.
- 5.10.03.11 Business or trade school.
- 5.10.03.12 Commercial greenhouse.
- 5.10.03.13 Mail order services.
- 5.10.03.14 Pinball or video games business.
- 5.10.03.15 Tavern and cocktail lounge, not including uses defined in Adult Establishment.
- 5.10.03.16 Totally enclosed, automated and conveyor-style car washes.
- 5.10.03.17 Convenience store with limited fuel sales.
- 5.10.03.18 Garden supply and retail garden center.
- 5.10.03.19 Outdoor storage in conjunction with another primary use.
- 5.10.03.20 Pet Health Services, provided the following:
  1. Said use is totally enclosed within a building.
  2. Said services shall be provided for dogs, cats, birds, fish, and similar small animals customarily used as household pets.
  3. Typical uses include animal veterinary clinics with overnight boarding, only if medically necessary, not exceeding 48 hours.
  4. Grooming shall only be associated with medical appointment.
  5. This excludes uses for livestock and other large animals and uses for general grooming, dog bathing and clipping salons.
- 5.10.03.21 *Self-storage units, provided:*
  1. *Storage unit is an extension of an existing self-storage unit or facility.*

2. *The topography and access of the property will limit the development of identified commercial uses.*
3. *No outdoor storage.*
4. *Unit or facility provides perimeter fencing in accordance with this ordinance and a vegetative screen of at least six (6) feet in height and twenty (20) feet in width to any adjacent residential zoned property.*
5. *Lighting on site shall not be directed at or allowed to shine on any residential zoned property.*
6. *Applications for self-storage units under the terms of this Section shall be accompanied by evidence concerning the feasibility of the proposed request and its affect on surrounding property and shall include a site plan defining the areas to be developed with buildings and/or structures, the areas to be developed for parking, driveways and points of ingress and egress, the location and height of walls and fences, the location and type of landscaping, and the location, size and number of signs.*
7. *Such use shall not be located adjacent to the intersection of two or more arterial streets.*
8. *The property shall have at least one boundary line that is adjacent to other property that is zoned I-1 Light Industrial or I-2 Heavy Industrial.*
9. *Such use shall not include storage of explosives or hazardous materials and shall be in accordance with the intent, purpose and spirit of this ordinance and the Comprehensive Development Plan of La Vista, Nebraska.*

**(Ordinance No. 954, 7-5-05)**

5.10.03.22 *Event center, provided:*

1. *A conditional use permit would need to include specifics to the design and operation of the proposed center and individual activities, including, but not limited to, a detailed site plan and floor plan, a complete list of appointed or designated managers for each event at the center, and a complete description and duration of each event submitted to the city prior to each event.*
2. *Lighting on site shall not be directed at or allowed to shine on any residential zoned property.*
3. *Buildings utilized as event centers shall be accompanied by evidence concerning the feasibility of the proposed request and its affect on surrounding property and shall include a site plan defining the areas to be developed with buildings and/or structures, the areas to be developed for parking, driveways and points of ingress and egress, the location and height of walls and fences, the location and type of landscaping, and the location, size and number of signs.*
4. *All signage shall comply with the City's established regulations.*

**(Ordinance No. 955, 7-19-05)**

5.10.03.23 *Animal Specialty Services with or without overnight boarding of animals and outdoor exercise areas. (Ordinance No. 1253, 6-16-15)*

5.10.03.24 *Pet Shop. (Ordinance No. 1253, 6-16-15)*

**5.10.04 Permitted Accessory Uses:**

- 5.10.04.01 *Buildings and uses customarily incidental to the permitted uses.*
- 5.10.04.02 *Parking as allowed in Section 7.05 through 7.09.*
- 5.10.04.03 *Signs allowed in Section 7.01 through 7.04.*
- 5.10.04.04 *Landscaping as required by Section 7.17.*
- 5.10.04.05 *Solar Energy Conversion Systems as provided for in Section 7.15. (Ordinance No. 1389, 3-3-2020)*

**5.10.05 Permitted Temporary Uses**

*Temporary Uses require a permit from the City of La Vista and shall be valid only for a specific amount of time as indicated on said permit. All platted lots or tracts of land may have a maximum number of four (4) temporary uses per calendar year. Such uses shall not last more than two (2) weeks per use, except as provided for hereafter. (Ordinance No. 998, 7-18-06)*

- 5.10.05.01 Temporary greenhouses.
- 5.10.05.02 Temporary structures as needed for sidewalk and other outdoor sales events.
- 5.10.05.03 Fireworks stands, provided the criteria are met as established by the City through separate Ordinances.
- 5.10.05.04 Buildings and uses incidental to construction work *are permitted to remain until completion or abandonment of the construction work, at which time they shall be removed. (Ordinance No. 998, 7-18-06)*
- 5.10.05.05 Temporary structure for festivals or commercial events.

#### 5.10.06 Height and Lot Requirements:

- 5.10.06.01 The height and minimum lot requirements shall be as follows:

Uses	Lot Area (SF)	Lot Width	Front Yard	Side Yard	Rear Yard	Max. Height	Max. Lot Coverage
Permitted Uses	-	150'	25' <sup>1</sup>	10'	25'	45'	60%
Permitted Conditional Uses	-	150'	25' <sup>1</sup>	10'	25'	45'	60%

<sup>1.</sup> 25' front yard setback required only when no parking is present in the front yard. If parking is located in the front yard then front yard setback is a minimum of fifty (50) feet.

#### 5.10.07 Use Limitations:

- 5.10.07.01 When adjacent to residentially zoned land, no parking, drives or signs shall be allowed in any required yard within fifteen (15) feet of such district.
- 5.10.07.02 Furthermore, permanent screening shall be provided in this area in order to minimize impacts on residentially zoned property, as per Section 7.17.04.
- 5.10.07.03 Exterior lighting fixtures shall be shaded so that no direct light is cast upon any residential property and so that no glare is visible to any traffic on any public street.
- 5.10.07.04 Zoning and land use standards for smoke shops, tobacco stores, CBD stores, and liquor stores shall be as follows:
  - Except as provided in subsection 5.10.07.04.04 below, the grouping of age sensitive uses (such as smoke shops, tobacco stores, CBD stores and liquor stores) shall be discouraged, and such uses shall be compatible with surrounding uses.
  - Except as provided in subsection 5.10.07.04.04 below, smoke shops, tobacco stores, CBD stores, and liquor stores shall not be located within three hundred (300) feet, measured property line to property line, from a school (public or private), family day care home, child care facility, youth center, community center, recreational facility or any other facility where children regularly gather or are present, or any park, church, religious institution, hospital, or other similar facility or uses.
  - Except as provided in subsection 5.10.07.04.04 below, smoke shops, tobacco stores, CBD stores, and liquor stores shall not be located within one thousand (1,000) feet, measured from property line to property line, from another smoke shop, tobacco store, CBD store, or liquor store in the same zoning district.
  - Wellness-oriented CBD stores engaged in the retail sale of cannabidiol ("CBD") and hemp oil products such as oils, skin care products, and other nutritional or therapeutic CBD based products, and that do not sell products to be smoked or vaped, or accessories or paraphernalia connected with smoking or vaping (such as bongs, glass or water pipes, vaporizers or dab rigs), shall not be subject to the requirements of Sections 5.10.07.04.01 through 5.10.07.04.03.