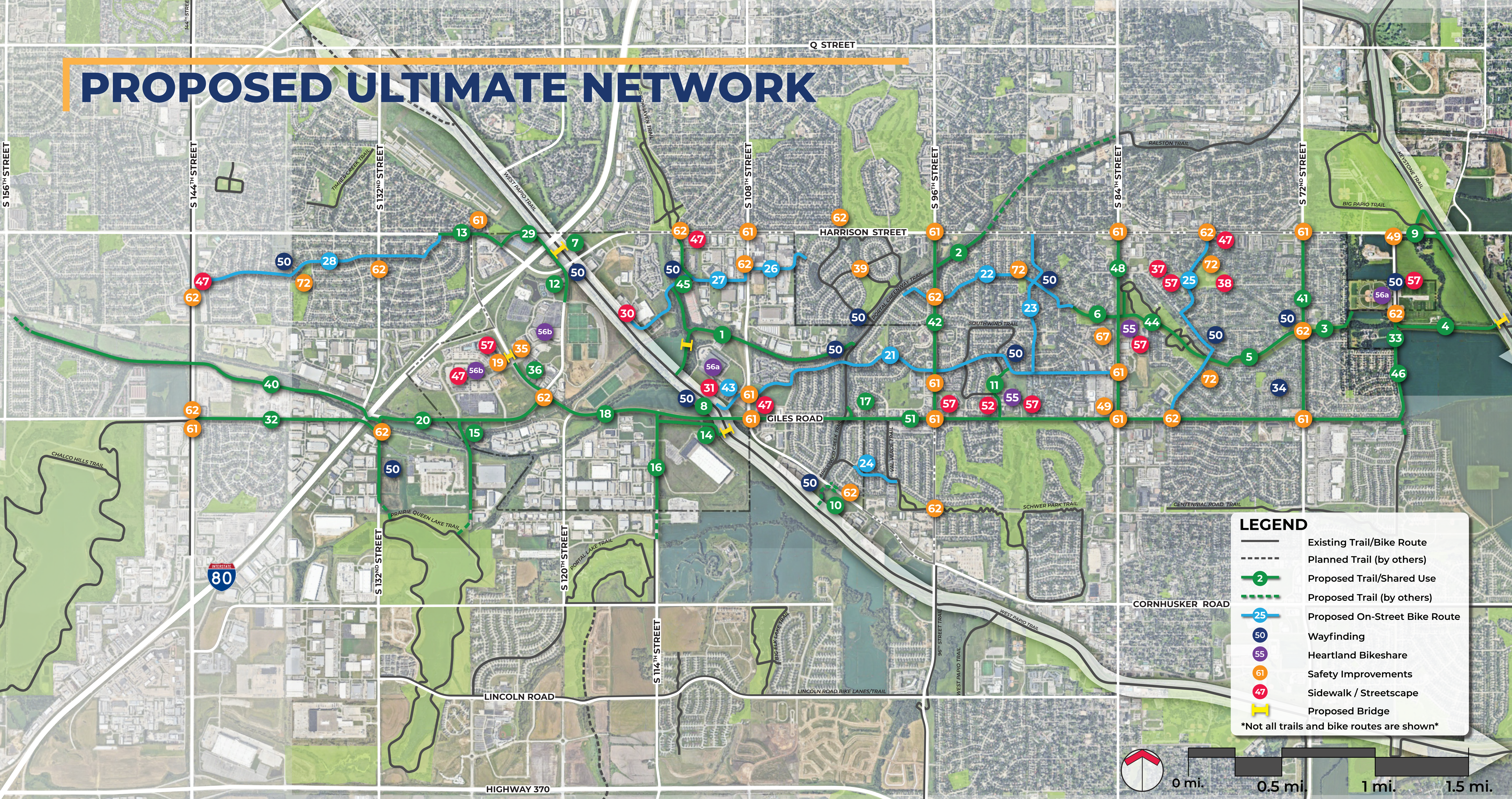
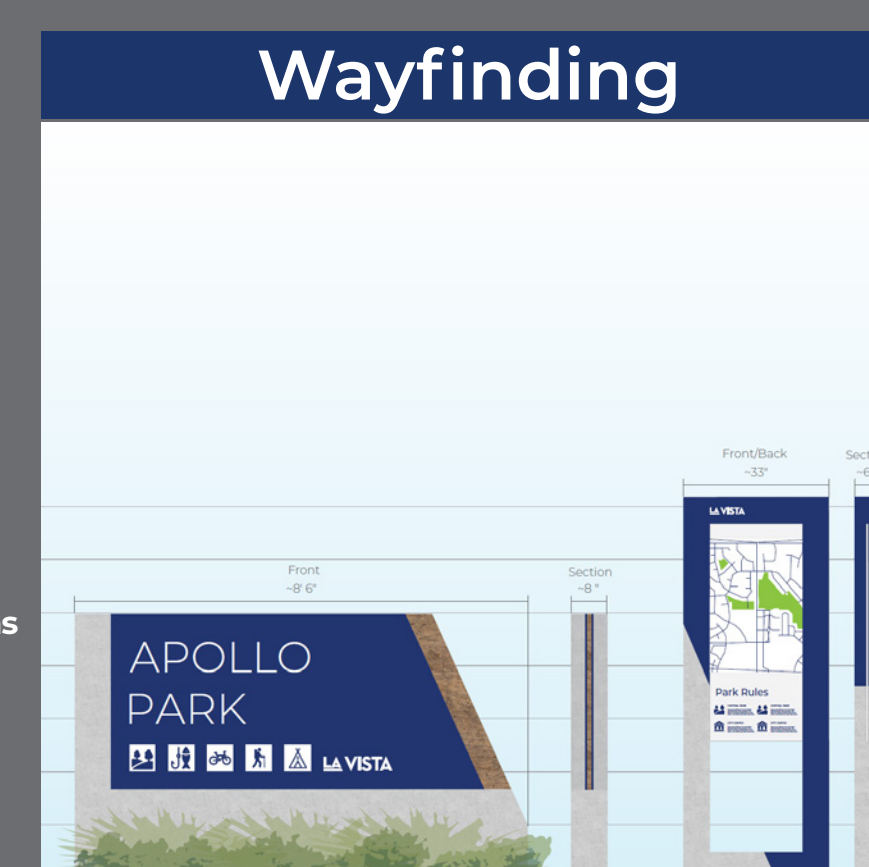


PROPOSED ULTIMATE NETWORK

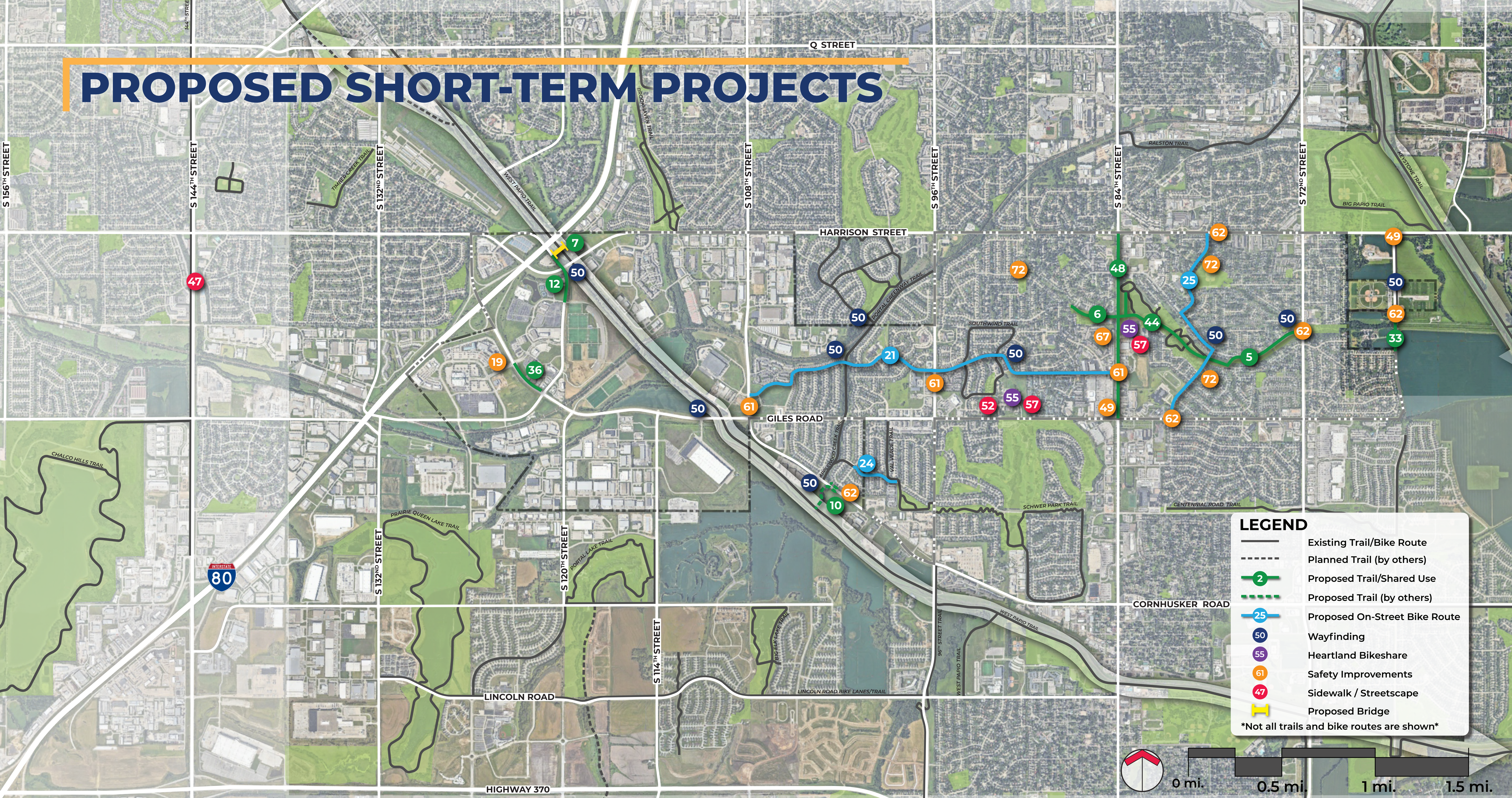


Other Proposed Policies

- | | | |
|-------------------------------------|--|--|
| 63 Motorist and Cyclist Education | 58 Improve Pedestrian Amenities | 70 Bike Rack Guidance |
| 67 Informational / Advisory Signage | 59 Bike Fix-it Stations | 71 Implement ADA Audit Recommendations |
| 68 Improved Mobility Communications | 60 Wheelchair Seating Spaces | 73 Sidewalk Repair Fund |
| 76 Police Officer Bike Patrols | 64 Review Trail and Sidewalk Widths | 75 Bike Rack Cost Share Program |
| 77 Active Mobility Considerations | 65 Review and Update ADA policies | 79 Improve Pedestrian Amenities in Commercial & Retail Areas |
| 78 Improve Painting for Crossings | 66 Truncated Dome Repairs | 74 Publicize Bike Maps |
| 80 Legislative Advocacy | 69 Encourage Pedestrian Facilities and Connections | |



PROPOSED SHORT-TERM PROJECTS



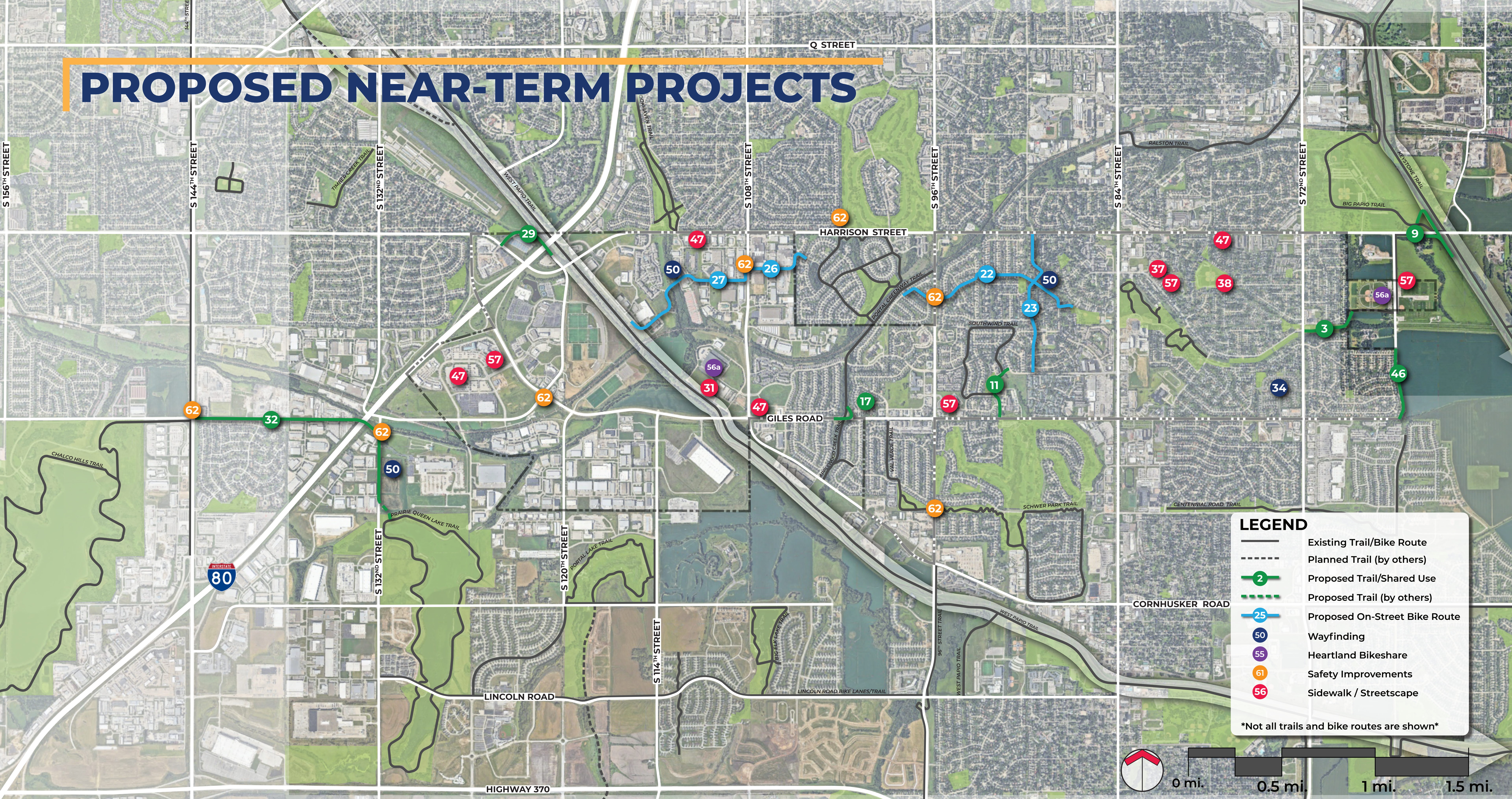
LEGEND

- Existing Trail/Bike Route
- Planned Trail (by others)
- Proposed Trail/Shared Use
- Proposed Trail (by others)
- Proposed On-Street Bike Route
- Wayfinding
- Heartland Bikeshare
- Safety Improvements
- Sidewalk / Streetscape
- Proposed Bridge

Not all trails and bike routes are shown

- | | | |
|---|--|-------------------------------------|
| 5 Thompson Creek Trail from Central Park to 72nd Street | 44 Central Park interior trail improvements | 49 Improve Painting for Crossings |
| 6 Central Park to Central Park West Trail extension from City Centre to Valley View Drive | 48 84th Street Trail (along both sides) from Giles to Harrison | 61 Intersection Improvements |
| 7 Bridge over West Papio Creek from trail to Southport | 21 Brentwood Drive bike route, 84th to 108th | 62 Improve Pedestrian Connections |
| 10 Portal Road crossing and West Papio Trail connection | 24 On-street bike route on West Centennial Road, Applewood Creek Trail to Val Verde | 67 Informational / Advisory Signage |
| 12 Shared use path along Eastport Parkway from new West Papio Creek bridge | 25 Bike boulevard along Edgewood Boulevard, Parkview Boulevard, and 78th Street, Giles to Harrison | 72 Safe Park Zones |
| 33 66th Street Trail connection to Ardmore East | 50 Improve Wayfinding and Signage | 47 Eliminate Sidewalk Gaps |
| 36 Giles Road Trail from Southport Parkway to Eastport Parkway | 55 Heartland bike share stations | 52 Southwind Dog Park Accessibility |
| | 19 Giles Road / Southport Parkway at-grade crosswalk improvements | 57 Encourage Citywide Bike Parking |

PROPOSED NEAR-TERM PROJECTS



- | | | |
|---|---|---|
| <ul style="list-style-type: none"> 3 Mayor's Park Trail from 72nd Street to La Vista Sports Complex 9 Grade separated connection from Harrison Street Trail to Big Papio/Keystone Trails 11 Shared Use Path/Trail along 92nd Ave and Robin Drive from Brentwood Drive to Giles Road 17 Giles Road to Applewood Creek Trail connection on north side 29 Shared use path along Eastport Parkway from new West Papio Creek bridge to Harrison Street 32 Chalco Hills to Prairie Queen connector 46 66th Street Trail connection from Giles to Ardmore East | <ul style="list-style-type: none"> 22 Valley View Drive bike route, from Portal Greenway Trail to Central Park West 23 Elm Drive/Pine Drive bike route from Brentwood Drive to Harrison Street 26 Gertrude Street bike route and trail connection to Edna Ave 27 Bike route along 118th Street, Olive Street, and Skinner Drive, from West Papio Trail to 108th Street 34 Giles Corner Park to Thompson Creek Trail wayfinding signs 50 Improve Wayfinding and Signage 56a Heartland bike share stations at West Papio Trail Trailhead (108th Street) and La Vista Sports Complex (66th Street) | <ul style="list-style-type: none"> 62 Improve Pedestrian Connections 31 Expanded parking at Harry Andersen and 109th Street trailhead 37 Community Center / La Vista West Elementary / City Centre connectivity 38 Triangle Park, City Park, Hollis Park connectivity 47 Eliminate Sidewalk Gaps 56 Heartland bike share stations at West Papio Trailhead (108th Street) and La Vista Sports Complex (66th Street) 57 Encourage Citywide Bike Parking |
|---|---|---|

PROPOSED LONG-TERM PROJECTS



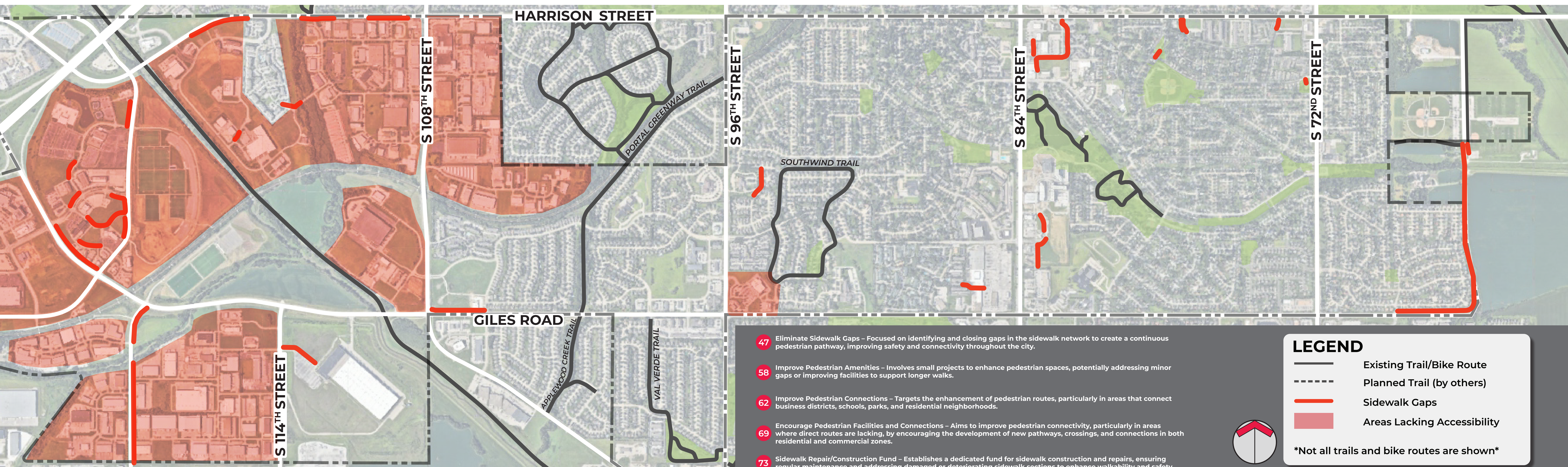
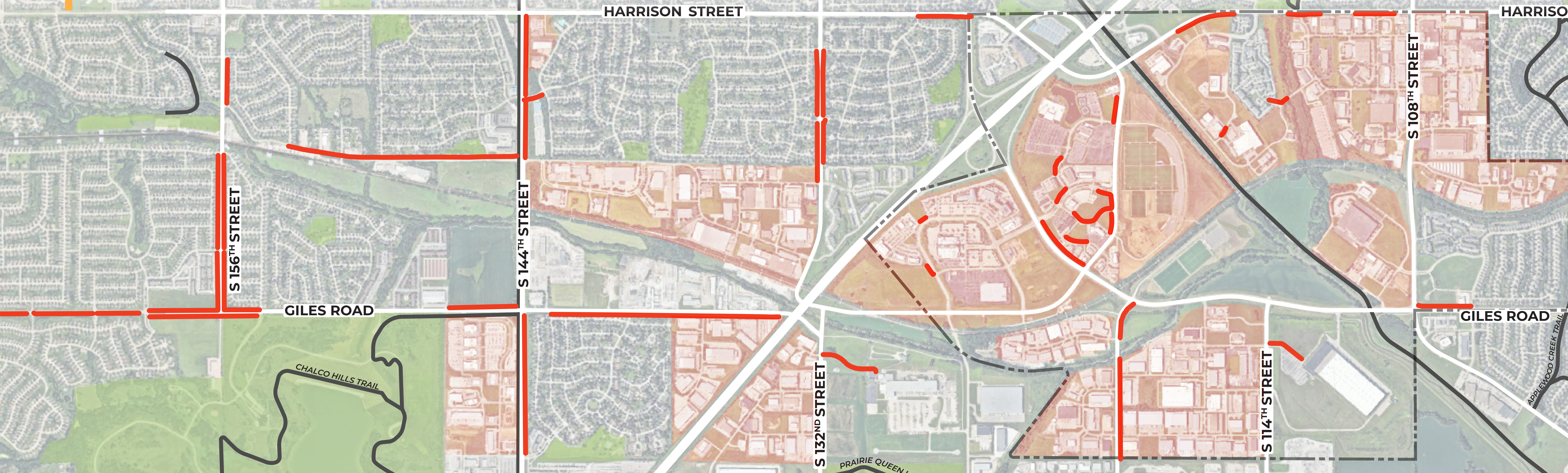
LEGEND

- Existing Trail/Bike Route
- Planned Trail (by others)
- Proposed Trail/Shared Use
- Proposed Trail (by others)
- Proposed On-Street Bike Route
- Wayfinding
- Heartland Bikeshare
- Safety Improvements
- Sidewalk / Streetscape
- Proposed Bridge

Not all trails and bike routes are shown

- | | | |
|--|--|---|
| 1 Applewood Creek Trail to West Papio Trail connection | 20 West Giles Road Trail/Bikeway from 132nd Street to Eastport Parkway | 50 Improve Wayfinding and Signage |
| 2 Applewood Creek Trail to Ralston Trail connection | 40 South Papio Trail (from 132nd to 156th) | 56b Heartland bike share stations - Southport West and Southport East |
| 4 Keystone Trail connection from La Vista Sports Complex | 41 72nd Street trail/sidewalk/shared use path (along east side) | 35 Giles Road and Southport Parkway crossing - grade separation |
| 8 Giles Road Trail from 114th Street to 108th Street | 42 96th Street trail/sidewalk/shared use path (along either side) | 39 Cimarron Woods (and elsewhere) ADA compliance |
| 13 Harrison Street Trail connection to Highland Drive | 45 Hell Creek Trail from West Papio Trail to Olive Street | 61 Intersection Improvements |
| 14 Giles Road Trail (south side) and bridge to West Papio Trail | 51 Giles Road Trail (108th to 66th Street, north side) | 62 Improve Pedestrian Connections |
| 15 126th St, Prairie Queen to Costco | 28 On-street bike route from 144th Street to Highland Boulevard along Josephine and Gertrude Streets | 30 Parking/Trailhead along 118th Street near Emiline or Olive |
| 16 114th Street Trail (west side) from Giles Road to Portal Lake Trail | 43 West Papio Trail / Brentwood Drive bike route connection | |
| 18 Giles Road Trail/Bikeway | | |

EXISTING SIDEWALK GAPS AND AREAS LACKING ACCESSIBILITY



- 47** Eliminate Sidewalk Gaps – Focused on identifying and closing gaps in the sidewalk network to create a continuous pedestrian pathway, improving safety and connectivity throughout the city.
- 58** Improve Pedestrian Amenities – Involves small projects to enhance pedestrian spaces, potentially addressing minor gaps or improving facilities to support longer walks.
- 62** Improve Pedestrian Connections – Targets the enhancement of pedestrian routes, particularly in areas that connect business districts, schools, parks, and residential neighborhoods.
- 69** Encourage Pedestrian Facilities and Connections – Aims to improve pedestrian connectivity, particularly in areas where direct routes are lacking, by encouraging the development of new pathways, crossings, and connections in both residential and commercial zones.
- 73** Sidewalk Repair/Construction Fund – Establishes a dedicated fund for sidewalk construction and repairs, ensuring regular maintenance and addressing damaged or deteriorating sidewalk sections to enhance walkability and safety.

LEGEND

- Existing Trail/Bike Route
- Planned Trail (by others)
- Sidewalk Gaps
- Areas Lacking Accessibility

Not all trails and bike routes are shown

